

# JZ

# Bar JZ Ranches

## *The 76th Annual Sale*

**Tuesday, February 18, 2025 1:00 p.m.**

### **Bar JZ South Ranch Sale Barn**

**9 north of Holabird, South Dakota**



60 Homozygous Polled Hereford Bulls  
2-year-olds • 18-month-olds  
53 Polled Hereford Spring Bred Heifers  
Our 25 BEST Open  
Polled Hereford Heifer Calves





# JZ

# Bar JZ Ranches

## 76th Annual Production Sale

### Tuesday, February 18, 2025

### 1:00 p.m.

Bar JZ  
South Ranch  
Sale Barn

### Sale Staff

Chisum Peterson, auctioneer	605/730-4214
Art Handel, Handel Marketing	605/391-8233
Aaron Friedt, American Hereford Ass'n	701/590-9597
Jeff Gerlach, President SDHA	605/999-1494
Jill Hotchkiss, <i>Hereford America</i>	605/490-1409
Phil Eggers, <i>The Livestock Link</i>	605/351-5438
Marc Hotchkiss, <i>The Livestock Link</i>	605/210-1956
Kadon Leddy, <i>Cattle Business Weekly</i>	605/924-0757
Kelly Klein, <i>Tri-State Livestock News</i>	701/320-5817
Jeff Kapperman, <i>Tri-State Neighbor</i>	605/940-5104

### Free Delivery

Bulls and heifers will be delivered immediately after the sale. For total purchases totaling \$15,000 or more, we will deliver within 300 miles to the buyer's yard. For purchases under \$15,000, we will ask buyers to meet us at a regional unloading point (e.g. sale barn) on a highway. We assist on deliveries over 300 miles. If you do not want delivery of your bull when we are ready to deliver, we will feed bulls for \$4/head/day, and you can pick them up when you are ready. Our guarantee will apply in case of injury or death of bulls wintered at Bar JZ.

### Terms & Conditions

Terms are cash or check. The auctioneer will settle any bidding disputes. Bar JZ Ranches reserves the right to reject any bid, and minimum selling prices will be \$4,000 for bulls, \$3,500 for bred, and \$2,250 for open heifers.

### Catalog Material

Special care has been taken to insure accuracy in the matter of EPDs, pedigrees, and other information included in this catalog. Any corrections will be announced on sale day. Bar JZ will not be responsible for catalog errors.

### Health of the Cattle

The cattle have been calfhood vaccinated for 7-way clostridium, IBR, BVD, PI3, BRSV, haemophilus, pasteurilla and dewormed with injectible Dectomax. Two-year-old and 18-month-old bulls have passed a breeding soundness exam. Bred heifers have had two rounds of scour vaccinations. They were ultrasounded for pregnancy. Health papers will be available. International health papers will be at the buyer's expense.

### Guarantee

All bulls are guaranteed breeders and guaranteed against injury, death or dissatisfaction for any reason for the first breeding season. If a bull should prove otherwise, credit for a replacement (if available) or for next year's sale will be issued. We reserve the right to require a bull be returned to Bar JZ Ranches at the buyer's expense for examination before exchanges or credits are made. Registration papers must be returned. Credit can be used to purchase another bull, calculated by 75% of the purchase price minus \$2,250 salvage value for bulls. If the bull did not die, but could be sold, the buyer would also have the market value to apply toward a new bull. In case of death, buyer must furnish proof to our satisfaction. Bred females are guaranteed bred. Kindly notify us as soon as possible if you intend to make a claim.

### Volume Discount

5% will apply to each bull after 3 head, i.e. 4th, 5th, etc. This does not apply to females.

### Liability

We will do our best to see there are no accidents (and we have never had one), but we will not be responsible for any accidents that might occur. You attend at your own risk.

### Retained Interest Bulls

We are retaining a revenue sharing 1/4 semen interest in all bulls. In all cases, semen collection will not affect the buyer's breeding season, and the buyer retains full possession and salvage value.

### Lunch

Complimentary lunch will be served.

### Accommodations

Hydeout B&B, Highmore	605/852-2540
Prairie View Motel, Highmore	605/852-2261
Ramkota, Pierre	605/224-6877
Holiday Inn Express, Ft. Pierre	605/223-9045
Marci's Bed & Breakfast, Miller	605/853-3568
Super 8 Motel, Miller	605/853-2721

If you need help making reservations, give us a call.

# DVAuction

Broadcasting Real-Time Auctions  
www.dvauction.com

Watch & Bid online for FREE!

Can't make the sale?  
Let DVAuction bring the sale to you!  
Busy during the sale?  
Let DVAuction represent your bid while you're away!

Visit [www.DVAuction.com](http://www.DVAuction.com)  
and Register today!

1. Create an account at [www.dvauction.com](http://www.dvauction.com) under the "register" tab
2. Apply for bidding approval by clicking the "details" tab at least 24 hours prior to the auction
3. Tune in for the sale and make your purchases!

For General Questions Please Contact Our Office:  
(402) 316-5460 or [support@dvauction.com](mailto:support@dvauction.com)

\*High Speed Internet Access Required

## Sale Day Phones

Bar JZ South Ranch Sale Barn .....605/852-2583  
Seth Zilverberg, cell .....605/870-2169  
Peg Zilverberg, cell .....605/870-1304  
Don Zilverberg, cell .....605/870-1302  
Bridget Zilverberg, cell .....605/870-9441  
Call us prior to sale day to arrange bidding by phone.

Livestock Videoing • Video Sales • Bid-by-Click Online Sales

# The Livestock Link™

The Livestock Link will once again be providing TVs for our video auction.



Watch & Bid online for FREE!

Visit [www.LivestockMarket.com](http://www.LivestockMarket.com) to register today!

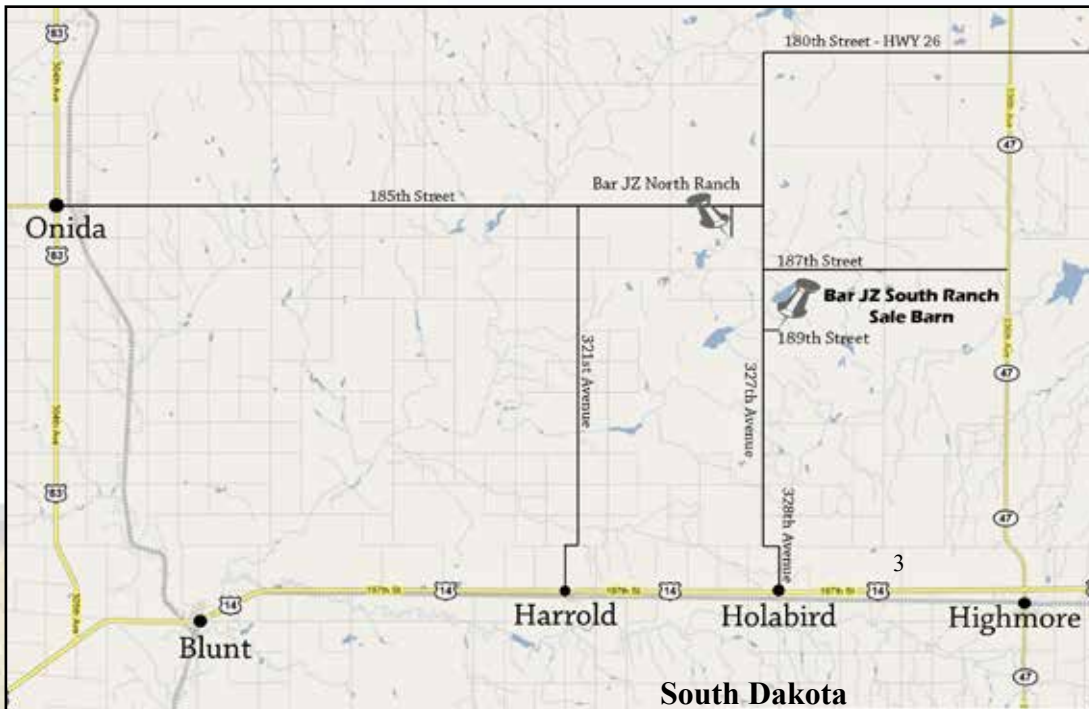
1. Create your account at [www.LivestockMarket.com](http://www.LivestockMarket.com) under the "Register" button
2. Apply for bidding by clicking "Can I Bid?" from the home page
3. Accept the Terms & Conditions for the sale you wish to bid on
4. Bid fast, bid often, and win!

For general questions or help in the registration process, please reach out to our support line at (844) 775-4762

[www.barjz.com](http://www.barjz.com)

Don & Peg Zilverberg  
Seth & Bridget Zilverberg

[cattle@barjz.com](mailto:cattle@barjz.com) or [seth@barjz.com](mailto:seth@barjz.com)



### Bar JZ Sale Location

Bar JZ South Ranch Sale Barn  
32748 189th St.  
Holabird, SD 57540

- ➔ from Holabird:  
9 north, 1/2 east
- ➔ from west side of Onida:  
23 east, 4 south, 1/2 east.
- ➔ from Junction of SD Hwy 47 & SD Hwy 26 (on gravel):  
8 west, 9 south, 1/2 east
- ➔ from Bar JZ North Ranch:  
1 east, 4 south, 1/2 east



Bar JZ Ranches  
18542 326 Avenue  
Holabird, SD 57540  
605/852-2966



February 2025

Fellow Cattlemen,

Welcome to our 76th Annual Production Sale and our first sale following major herd updates. Having focused our efforts and resources on Hereford cattle, we have our largest Hereford cow herd ever. This allows us to offer you more depth of quality in both bulls and heifers.

The bulls will begin turning 2 years old in May. They have never been fed for maximum growth. As weaned calves we fed them 42 Mcals, then pasture over summer, and 44 Mcals beginning in mid-October. The resulting breeding bull has the maturity to have already passed a breeding soundness exam and cover more cows or heifers than a yearling. Yet, his weight is significantly lower than early born bulls who have been lounging around a feedlot, giving you more seasons for breeding heifers, and a bull that could top out a lower mature weight, reducing risk of breaking down cows.

The bred heifer offering is nearly half of our replacements. We selected all our final crop of March-April-born heifers in addition to all May-born heifers owned by Don and Peg for this sale. They have been bred and fed with our replacements.

After keeping all heifer calves for several years, we sorted our best 25 heifer calves to offer you this year!

We look forward to seeing you at our sale, but we understand the demand of chores, especially in adverse weather. Please contact us if we can assist you in selecting a bull; we guarantee your satisfaction. You may bid online or bid over the phone. Be sure to check out our website with videos of the bulls.

Despite all the changes around here, we remain your grandpa and grandma, ma and pa, seedstock provider. Thanks for your business, and we wish you a prosperous year!

Sincerely,  
The Zilverbergs  
*Don & Peg*  
*Seth, Bridget, Solanus & Avila*





# BULLS BY - SHF HOUSTON D287 H086

## SHF Houston D287 H086 - Reference Sire

{DLF,HYF,IEF,MSUDF,MDF,DBF}

Homozygous Polled 2/08/2020 P44123641

Sire: SHF Daybreak Y02 D287 Et

Dam: SHF Miss 14 20Z D223

Lots: Bulls 1-23. Bred heifers 101-107. Open heifer 184.

**Houston.** #1 registration sire in 2023 for the breed. Big time growth, length, and carcass. Daughters reported to have beautiful udders.

CED	BW	WW	YW	SC	MM	MCE	MCW	UDR	TEAT	CW	REA	MB	BMI	CHB
0.8	3.5	84	136	1.9	29	0.9	126	1.50	1.40	103	.97	.23	459	178



## 1 Bar JZ Hondo 847L {DLF,HYF,IEF,MSUDF}

Polled Hereford Bull 5/9/2023 P44471703

Homo Polled

SHF Houston D287 H086

SHF Daybreak Y02 D287 ET  
SHF Miss 14 20Z D223



Bar JZ Brynn 307G

Frenzen Bar JZ Bruiser B30  
Bar JZ Sabrina 899A

847L BW 91 WEANING RATIO 110 DAM'S AGE 4 L. EYE 100% R. EYE 100%

CED	BW	WW	YW	SC	MM	MCE	MCW	UDR	TEAT	CW	REA	MB	BMI	CHB
0.2	3.0	76	119	2.0	33	3.3	126	1.30	1.30	91	.91	.07	467	140

Homozygous Polled. We used for natural service.



## 2 Bar JZ Hondo 864L {DLF,HYF,IEF,MSUDF}

Polled Hereford Bull 5/14/2023 P44474508

Homo Polled

SHF Houston D287 H086

SHF Daybreak Y02 D287 ET  
SHF Miss 14 20Z D223



Bar JZ Brynn 602H

Frenzen Bar JZ Bruiser B30  
Bar JZ Heartstrings 925E

864L BW 87 WEANING RATIO 115 DAM'S AGE 3 L. EYE 100% R. EYE 100%

CED	BW	WW	YW	SC	MM	MCE	MCW	UDR	TEAT	CW	REA	MB	BMI	CHB
-3.9	4.5	84	135	1.8	31	3.9	131	1.30	1.20	92	.83	.06	465	141

Homozygous Polled.



Hereford EPDS in this catalog current as of January 2025.

### Breed Average EPDs for 2023 Born Hereford Calves

CED	BW	WW	YW	SC	MM	MCE	MCW	UDR	TEAT	CW	REA	MB	BMI	CHB
3.5	2.6	56	90	1.1	27	1.6	89	1.28	1.29	71	.46	.15	371	122

In our catalog EPDs highlighted in blue are in the upper 10% of the breed for that specific trait.

[www.barjz.com](http://www.barjz.com)  
Video of each sale lot

**Homozygous Polled** - The bull carries no horned genes and will sire all polled calves, even on horned cows. The test is highly accurate but not a guarantee. **Heterozygous polled** bulls carry one polled gene and one horned gene, and should sire mostly polled calves on polled cows and should sire 1/2 polled and 1/2 horned calves on horned cows.

Homo Polled



# BULLS BY - SHF Houston D287 H086

**3** | **Bar JZ Hondo 841L** {DLF,HYF,IEF,MSUDF,MDF,DBF}  
 Polled Hereford Bull 5/4/2023 P44474608

Homo Polled

SHF Houston D287 H086 SHF Daybreak Y02 D287 ET  
 SHF Miss 14 20Z D223  
 Bar JZ Blessing 660H Bar JZ Buccaneer 210E  
 Bar JZ Glory 596Z



841L BW 82 WEANING RATIO 110 DAM'S AGE 3 L. EYE 100% R. EYE 100%

CED	BW	WW	YW	SC	MM	MCE	MCW	UDR	TEAT	CW	REA	MB	BMI	CHB
4.4	1.0	70	103	1.4	27	5.6	87	1.40	1.30	87	1.06	.15	430	146

Homozygous Polled.



**4** | **Bar JZ Hondo 868L** {DLF,HYF,IEF,MSUDF}  
 Polled Hereford Bull 5/14/2023 P44474998

Homo Polled

SHF Houston D287 H086 SHF Daybreak Y02 D287 ET  
 SHF Miss 14 20Z D223  
 Bar JZ Brynn 803E Frenzen Bar JZ Bruiser B30  
 Bar JZ Scarlett 544T



868L BW 92 WEANING RATIO 111 DAM'S AGE 6 L. EYE 60% R. EYE 100%

CED	BW	WW	YW	SC	MM	MCE	MCW	UDR	TEAT	CW	REA	MB	BMI	CHB
2.9	2.4	75	111	1.2	37	-0.8	105	1.40	1.30	87	.61	.16	417	143

Homozygous Polled.



**5** | **Bar JZ Hondo 843L** {DLF,HYF,IEF,MSUDF}  
 Polled Hereford Bull 5/5/2023 P44474544

Homo Polled

SHF Houston D287 H086 SHF Daybreak Y02 D287 ET  
 SHF Miss 14 20Z D223  
 Bar JZ Tequila Rose 629H NJW 33TB 100W Trust 167Y  
 Bar JZ Crimson 798E



843L BW 75 WEANING RATIO 110 DAM'S AGE 3 L. EYE 75% R. EYE 90%

CED	BW	WW	YW	SC	MM	MCE	MCW	UDR	TEAT	CW	REA	MB	BMI	CHB
6.1	1.9	65	102	1.0	25	6.1	102	1.50	1.40	79	.56	.31	415	149

Homozygous Polled. Heifer breeding prospect.



**6** | **Bar JZ Hondo 858L** {DLF,HYF,IEF,MSUDF}  
 Polled Hereford Bull 5/11/2023 P44472769

Homo Polled

SHF Houston D287 H086 SHF Daybreak Y02 D287 ET  
 SHF Miss 14 20Z D223  
 Bar JZ Stacey 452G Bar JZ Statesman 105D  
 Bar JZ Lottie 345C ET



858L BW 73 WEANING RATIO 105 DAM'S AGE 4 L. EYE 100% R. EYE 100%

CED	BW	WW	YW	SC	MM	MCE	MCW	UDR	TEAT	CW	REA	MB	BMI	CHB
8.7	0.7	61	96	1.6	25	-0.1	109	1.40	1.30	85	.62	.20	400	148

Homozygous Polled by pedigree. Heifer breeding prospect.





# BULLS BY - SHF Houston D287 H086

**7** **Bar JZ Hondo 916L** {DLF,HYF,IEF,MSUDF}  
 Polled Hereford Bull 5/22/2023 P44474562

Homo Polled

SHF Houston D287 H086

SHF Daybreak Y02 D287 ET  
 SHF Miss 14 20Z D223  
 Innisfail WHR X651/723 4013 ET  
 Bar JZ Felicity 644D

Bar JZ Imagination 648H



916L BW 82 WEANING RATIO 108 DAM'S AGE 3 L. EYE 80% R. EYE 100%

CED	BW	WW	YW	SC	MM	MCE	MCW	UDR	TEAT	CW	REA	MB	BMI	CHB
8.8	2.5	72	115	1.6	26	3.5	88	1.50	1.50	78	.57	.42	502	158

Homozygous Polled.



**8** **Bar JZ Hondo 911L** {DLF,HYF,IEF,MSUDF}  
 Polled Hereford Bull 5/21/2023 P44474995

Homo Polled

SHF Houston D287 H086

SHF Daybreak Y02 D287 ET  
 SHF Miss 14 20Z D223  
 Bar JZ Sleep On 738C  
 Bar JZ Hope 928A

Bar JZ Sleepover 800E



911L BW 89 WEANING RATIO 98 DAM'S AGE 6 L. EYE 100% R. EYE 100%

CED	BW	WW	YW	SC	MM	MCE	MCW	UDR	TEAT	CW	REA	MB	BMI	CHB
-2.6	2.4	74	117	1.8	36	-0.3	111	1.50	1.50	90	.84	.18	415	154

Homozygous Polled by pedigree.



**9** **Bar JZ Hondo 863L** {DLF,HYF,IEF,MSUDF}  
 Polled Hereford Bull 5/13/2023 P44474622

Homo Polled

SHF Houston D287 H086

SHF Daybreak Y02 D287 ET  
 SHF Miss 14 20Z D223  
 Bar JZ Gunner 308A  
 Bar JZ Fern 531Y

Bar JZ Glimmer 685D



863L BW 87 WEANING RATIO 108 DAM'S AGE 7 L. EYE 100% R. EYE 50%

CED	BW	WW	YW	SC	MM	MCE	MCW	UDR	TEAT	CW	REA	MB	BMI	CHB
5.7	1.9	68	108	1.6	33	7.0	85	1.40	1.40	87	.70	.23	499	151

Homozygous Polled.





# BULLS BY - SHF Houston D287 H086

**10 Bar JZ Hondo 867L** {DLF,HYF,IEF,MSUDF}  
 Polled Hereford Bull 5/14/2023 P44471677

Homo Polled

SHF Houston D287 H086

SHF Daybreak Y02 D287 ET  
 SHF Miss 14 20Z D223  
 GV CMR 351 Proof Y459  
 Bar JZ Virginia 473Y



Bar JZ Paisley 159B

867L BW 85 WEANING RATIO 107 DAM'S AGE 9 L. EYE 0 R. EYE 100%

CED	BW	WW	YW	SC	MM	MCE	MCW	UDR	TEAT	CW	REA	MB	BMI	CHB
2.4	2.9	71	102	1.6	27	4.7	110	1.40	1.50	86	.69	.27	494	155

Homozygous Polled.

Lot 11. Out of sale.

**12 Bar JZ Hondo 877L** {DLF,HYF,IEF,MSUDF}  
 Polled Hereford Bull 5/16/2023 P44472766

Homo Polled

SHF Houston D287 H086

SHF Daybreak Y02 D287 ET  
 SHF Miss 14 20Z D223  
 Bar JZ Statesman 105D  
 Bar JZ Rene 873W

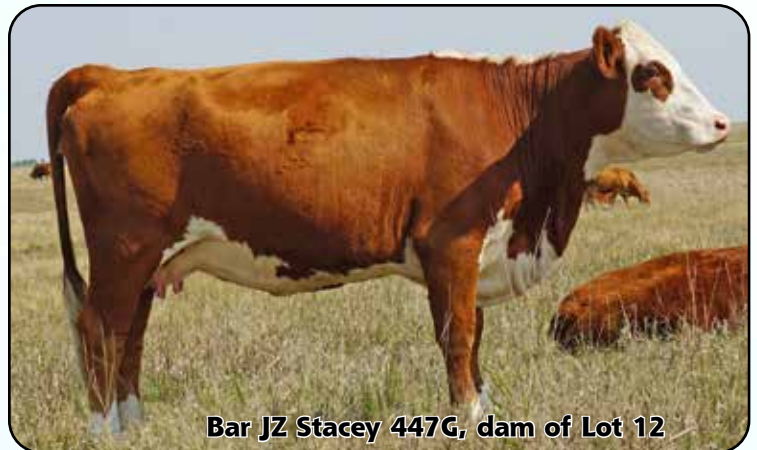


Bar JZ Stacey 447G

877L BW 88 WEANING RATIO 110 DAM'S AGE 4 L. EYE 100% R. EYE 100%

CED	BW	WW	YW	SC	MM	MCE	MCW	UDR	TEAT	CW	REA	MB	BMI	CHB
0.8	3.0	73	108	1.6	34	4.8	129	1.40	1.30	104	.88	.31	476	183

Homozygous Polled by pedigree.



**13 Bar JZ Hondo 878L** {DLF,HYF,IEF,MSUDF}  
 Polled Hereford Bull 5/16/2023 P44474527

Homo Polled

SHF Houston D287 H086

SHF Daybreak Y02 D287 ET  
 SHF Miss 14 20Z D223  
 Bar JZ Buccaneer 210E  
 Bar JZ Enchantress 680D



Bar JZ Blessing 613H

878L BW 84 WEANING RATIO 110 DAM'S AGE 3 L. EYE 0 R. EYE 100%

CED	BW	WW	YW	SC	MM	MCE	MCW	UDR	TEAT	CW	REA	MB	BMI	CHB
7.2	0.4	73	109	1.2	27	6.9	99	1.40	1.50	97	.91	.20	499	156

Homozygous Polled.





# BULLS BY - SHF Houston D287 H086

**14 Bar JZ Hondo 881L** {DLF,HYF,IEF,MSUDF}  
 Polled Hereford Bull 5/17/2023 P44474522

Homo Polled

SHF Houston D287 H086

SHF Daybreak Y02 D287 ET  
 SHF Miss 14 20Z D223  
 Frenzen Bar JZ Bruiser B30  
 Bar JZ Fern 781Z



Bar JZ Brynn 610D ET

881L BW 72 WEANING RATIO 100 DAM'S AGE 7 L. EYE 100% R. EYE 100%

CED	BW	WW	YW	SC	MM	MCE	MCW	UDR	TEAT	CW	REA	MB	BMI	CHB
9.2	0.7	67	100	1.0	29	12.8	108	1.50	1.40	80	.47	.16	434	134

Homozygous Polled by pedigree. Heifer breeding prospect.



**15 Bar JZ Hondo 920L** {DLF,HYF,IEF,MSUDF}  
 Polled Hereford Bull 5/24/2023 P44472761

Homo Polled

SHF Houston D287 H086

SHF Daybreak Y02 D287 ET  
 SHF Miss 14 20Z D223  
 Bar JZ Dutchman 310E  
 Bar JZ Sleepover 791E



Bar JZ Tulip 418G

920L BW 88 WEANING RATIO 125 DAM'S AGE 4 L. EYE 75% R. EYE 90%

CED	BW	WW	YW	SC	MM	MCE	MCW	UDR	TEAT	CW	REA	MB	BMI	CHB
1.8	1.5	79	125	1.8	34	3.1	108	1.30	1.40	96	.88	.23	364	164

Homozygous Polled.



**16 Bar JZ Hondo 883L** {DLF,HYF,IEF,MSUDF}  
 Polled Hereford Bull 5/17/2023 P44474621

Homo Polled

SHF Houston D287 H086

SHF Daybreak Y02 D287 ET  
 SHF Miss 14 20Z D223  
 NJW 33TB 100W Trust 167Y  
 Bar JZ Scarlet 740U



Bar JZ Tequila Rose 684H

883L BW 90 WEANING RATIO 98 DAM'S AGE 3 L. EYE 75% R. EYE 10%

CED	BW	WW	YW	SC	MM	MCE	MCW	UDR	TEAT	CW	REA	MB	BMI	CHB
1.6	3.8	63	107	1.1	27	0.5	116	1.40	1.40	74	.69	.15	371	137

Homozygous Polled.



**17 Bar JZ Hondo 912L** {DLF,HYF,IEF,MSUDF}  
 Polled Hereford Bull 5/21/2023 P44471671

Homo Polled

SHF Houston D287 H086

SHF Daybreak Y02 D287 ET  
 SHF Miss 14 20Z D223  
 Churchill Pilgrim 632D ET  
 Bar JZ Paisley 159B



Bar JZ Poppy 138F

912L BW 91 WEANING RATIO 121 DAM'S AGE 5 L. EYE 100% R. EYE 100%

CED	BW	WW	YW	SC	MM	MCE	MCW	UDR	TEAT	CW	REA	MB	BMI	CHB
5.2	2.4	71	105	1.7	33	3.3	80	1.40	1.40	89	.73	.13	504	139

Homozygous Polled. We used for natural service.





# BULLS BY - SHF HOUSTON D287 H086

**18 Bar JZ Hondo 889L** {DLF,HYF,IEF,MSUDF}  
 Polled Hereford Bull 5/18/2023 P44471661



SHF Houston D287 H086 SHF Daybreak Y02 D287 ET  
 SHF Miss 14 20Z D223  
 Bar JZ Shyanna 070F TH 49U 719T Sheyenne 3X  
 Bar JZ Glimmer 672D

889L BW 88 WEANING RATIO 105 DAM'S AGE 5 L. EYE 0 R. EYE 0

CED	BW	WW	YW	SC	MM	MCE	MCW	UDR	TEAT	CW	REA	MB	BMI	CHB
5.6	2.2	77	127	1.6	34	7.6	105	1.40	1.40	97	.86	.18	365	162

Homozygous Polled.



**19 Bar JZ Hondo 893L** {DLF,HYF,IEF,MSUDF}  
 Polled Hereford Bull 5/18/2023 P44472740



SHF Houston D287 H086 SHF Daybreak Y02 D287 ET  
 SHF Miss 14 20Z D223  
 Bar JZ Wendy 343Y Boyd Worldwide 9050 ET  
 Bar JZ 346C Lady 701H

893L BW 83 WEANING RATIO 105 DAM'S AGE 12 L. EYE 50% R. EYE 100%

CED	BW	WW	YW	SC	MM	MCE	MCW	UDR	TEAT	CW	REA	MB	BMI	CHB
6.8	0.4	64	97	1.0	27	2.9	76	1.40	1.50	67	.46	.14	474	118

Homozygous Polled.



**20 Bar JZ Hondo 899L** {DLF,HYF,IEF,MSUDF}  
 Polled Hereford Bull 5/19/2023 P44474655



SHF Houston D287 H086 SHF Daybreak Y02 D287 ET  
 SHF Miss 14 20Z D223  
 Bar JZ Crimson 776E ET Churchill Kickstart 501C ET  
 Bar JZ Rene 873W

899L BW 76 WEANING RATIO 100 DAM'S AGE 6 L. EYE 100% R. EYE 100%

CED	BW	WW	YW	SC	MM	MCE	MCW	UDR	TEAT	CW	REA	MB	BMI	CHB
12.4	-0.6	60	86	1.5	25	3.3	75	1.30	1.30	73	.50	.06	420	115

Homozygous Polled by pedigree. Heifer breeding prospect.



**21 Bar JZ Hondo 902L** {DLF,HYF,IEF,MSUDF}  
 Polled Hereford Bull 5/20/2023 P44471697



SHF Houston D287 H086 SHF Daybreak Y02 D287 ET  
 SHF Miss 14 20Z D223  
 Bar JZ Brynn 278G Frenzen Bar JZ Bruiser B30  
 Bar JZ Sapphire 806E

902L BW 96 WEANING RATIO 107 DAM'S AGE 4 L. EYE 50% R. EYE 100%

CED	BW	WW	YW	SC	MM	MCE	MCW	UDR	TEAT	CW	REA	MB	BMI	CHB
2.5	4.4	80	130	0.7	28	8.2	118	1.40	1.30	91	.53	.19	395	149

Homozygous Polled.





# BULLS BY - SHF HOUSTON D287 H086

**22** | **Bar JZ Hondo 909L** {DLF,HYF,IEF,MSUDF}  
 Polled Hereford Bull      5/20/2023      P44471687



**SHF Houston D287 H086**      SHF Daybreak Y02 D287 ET  
    SHF Miss 14 20Z D223  
**Bar JZ Brynn 241G**      Frenzen Bar JZ Bruiser B30  
    Bar JZ Sapphire 883E

909L   BW 90   WEANING RATIO 108   DAM'S AGE 4   L. EYE 100%   R. EYE 100%

CED	BW	WW	YW	SC	MM	MCE	MCW	UDR	TEAT	CW	REA	MB	BMI	CHB
0.3	2.5	73	112	1.9	31	6.4	84	1.40	1.30	82	.79	.14	433	133

Homozygous Polled.



**23** | **Bar JZ Hondo 885L**  
 Polled Hereford Bull      5/17/2023      P44474641



**SHF Houston D287 H086**      SHF Daybreak Y02 D287 ET  
    SHF Miss 14 20Z D223  
**Bar JZ Jasmine 706D**      DKF Hey Jack 1065  
    Bar JZ Dulcie 056A

885L   BW 85   WEANING RATIO 116   DAM'S AGE 7   L. EYE 100%   R. EYE 100%

CED	BW	WW	YW	SC	MM	MCE	MCW	UDR	TEAT	CW	REA	MB	BMI	CHB
4.9	3.0	72	119	1.1	30	2.6	101	1.40	1.40	83	.59	.25	393	144

Scurs.





# BULLS BY - RV VALOR 9444G ET

## RV Valor 9444G ET - Reference Sire

{CHB,DLF,HYF,IEF,MSUDF,MDF}

Homozygous Polled 3/18/2019 P44076080

Sire: JDH Victor 719T 33Z ET

Dam: RV Bobbi 1404

Lots: Bulls 24-34. Bred Heifers 108-119.

Valor has left his mark in our herd! He sired our 2023 high seller, On Demand, going to Hoffman Ranch and Genex. On Demand was used around the nation this breeding season, including in our herd. The Valor daughters have exceptional udder quality.

CED	BW	WW	YW	SC	MM	MCE	MCW	UDR	TEAT	CW	REA	MB	BMI	CHB
12.1	-1.3	61	92	1.0	15	0.8	87	1.60	1.70	102	.73	.31	488	179



## 24 Bar JZ Valiant 870L {DLF,HYF,IEF,MSUDF}

Polled Hereford Bull 5/15/2023 P44472748

Homo Polled

RV Valor 9444G ET

JDH Victor 719T 33Z ET

RV Bobbi 1404

Churchill Pilgrim 632D ET

Bar JZ Paisley 159B



Bar JZ Poppy 355G

870L BW 70 WEANING RATIO 107 DAM'S AGE 4 L. EYE 100% R. EYE 100%

CED	BW	WW	YW	SC	MM	MCE	MCW	UDR	TEAT	CW	REA	MB	BMI	CHB
11.9	-2.0	52	76	1.4	23	4.1	58	1.50	1.80	84	.69	.25	480	143

Homozygous Polled. We used for natural service. Heifer breeding prospect.



## 25 Bar JZ Valiant 853L {DLF,HYF,IEF,MSUDF}

Polled Hereford Bull 5/10/2023 P44474556

Homo Polled

RV Valor 9444G ET

JDH Victor 719T 33Z ET

RV Bobbi 1404

C&L CT Federal 485T 6Y

Bar JZ Hope 898A



Bar JZ Felicity 644D

853L BW 66 WEANING RATIO 89 DAM'S AGE 7 L. EYE 100% R. EYE 100%

CED	BW	WW	YW	SC	MM	MCE	MCW	UDR	TEAT	CW	REA	MB	BMI	CHB
17.4	-3.2	55	78	0.5	16	9.4	101	1.70	1.60	80	.49	.29	462	155

Homozygous Polled. Heifer breeding prospect.



Bar JZ Poppy 355G, dam of Lot 24



Bar JZ Eloquent 032F, dam of Lot 28

Bar JZ Serendipity 446G, dam of Lot 26



# BULLS BY - RV VALOR 9444G ET

**26** | **Bar JZ Valiant 861L** {DLF,HYF,IEF,MSUDF}  
 Polled Hereford Bull 5/13/2023 P44472765

Homo Polled

RV Valor 9444G ET

JDH Victor 719T 33Z ET  
 RV Bobbi 1404  
 Bar JZ Surgical Strike 014D ET  
 Bar JZ Brynn 610D ET

AHA GE-EPD

Bar JZ Serendipity 446G

861L BW 93 WEANING RATIO 113 DAM'S AGE 4 L. EYE 100% R. EYE 100%

CED	BW	WW	YW	SC	MM	MCE	MCW	UDR	TEAT	CW	REA	MB	BMI	CHB
1.5	3.8	78	126	1.7	26	0.6	145	1.50	1.40	102	.73	.31	358	177

Homozygous Polled by pedigree. We used for natural service.



**27** | **Bar JZ Valiant 873L** {DLF,HYF,IEF,MSUDF}  
 Polled Hereford Bull 5/15/2023 P44472750

Homo Polled

RV Valor 9444G ET

JDH Victor 719T 33Z ET  
 RV Bobbi 1404  
 Bar JZ Sleep On 738C  
 Bar JZ Felicity 617D ET

AHA GE-EPD

Bar JZ Sleepover 362G

873L BW 77 WEANING RATIO 111 DAM'S AGE 4 L. EYE 100% R. EYE 100%

CED	BW	WW	YW	SC	MM	MCE	MCW	UDR	TEAT	CW	REA	MB	BMI	CHB
8.2	-0.9	68	103	1.7	29	0.2	112	1.40	1.50	83	.62	.16	365	138

Homozygous Polled by pedigree. Heifer breeding prospect.



**28** | **Bar JZ Valiant 849L** {DLF,HYF,IEF,MSUDF}  
 Polled Hereford Bull 5/10/2023 P44469790

Homo Polled

RV Valor 9444G ET

JDH Victor 719T 33Z ET  
 RV Bobbi 1404  
 Mohican THM Excede Z426  
 Bar JZ Valerie 719D

AHA GE-EPD

Bar JZ Eloquent 032F

849L BW 81 WEANING RATIO 113 DAM'S AGE 5 L. EYE 100% R. EYE 100%

CED	BW	WW	YW	SC	MM	MCE	MCW	UDR	TEAT	CW	REA	MB	BMI	CHB
7.6	-1.3	61	97	0.7	22	-1.9	81	1.50	1.70	98	.97	.07	413	147

Homozygous Polled.



**29** | **Bar JZ Valiant 857L** {DLF,HYF,IEF,MSUDF}  
 Polled Hereford Bull 5/11/2023 P44472773

Homo Polled

RV Valor 9444G ET

JDH Victor 719T 33Z ET  
 RV Bobbi 1404  
 Bar JZ Surgical Strike 014D ET  
 Bar JZ Hope 837A ET

AHA GE-EPD

Bar JZ Serendipity 509G

857L BW 84 WEANING RATIO 108 DAM'S AGE 4 L. EYE 100% R. EYE 100%

CED	BW	WW	YW	SC	MM	MCE	MCW	UDR	TEAT	CW	REA	MB	BMI	CHB
7.8	1.6	61	95	1.6	24	0.8	76	1.40	1.50	76	.77	.19	459	137

Homozygous Polled.





# BULLS BY - RV VALOR 9444G ET

## 30 Bar JZ Valiant 875L {DLF,HYF,IEF,MSUDF}

Polled Hereford Bull 5/16/2023 P44471673

Homo Polled

RV Valor 9444G ET

JDH Victor 719T 33Z ET  
RV Bobbi 1404



Bar JZ Serendipity 147F

Bar JZ Surgical Strike 014D ET  
Bar JZ Hannah 087B

875L BW 77 WEANING RATIO 92 DAM'S AGE 5 L. EYE 100% R. EYE 100%

CED	BW	WW	YW	SC	MM	MCE	MCW	UDR	TEAT	CW	REA	MB	BMI	CHB
16.4	-1.4	55	82	0.8	19	6.7	100	1.70	1.70	84	.56	.43	482	168

Homozygous Polled by pedigree. Heifer breeding prospect.



## 31 Bar JZ Valiant 891L {DLF,HYF,IEF,MSUDF,MDF,DBF}

Polled Hereford Bull 5/18/2023 P44472764

Homo Polled

RV Valor 9444G ET

JDH Victor 719T 33Z ET  
RV Bobbi 1404



Bar JZ Heartstrings 436G

Bar JZ Hearthstone 426B ET  
Bar JZ Brynn 605D

891L BW 76 WEANING RATIO 98 DAM'S AGE 4 L. EYE 100% R. EYE 100%

CED	BW	WW	YW	SC	MM	MCE	MCW	UDR	TEAT	CW	REA	MB	BMI	CHB
11.5	-0.7	57	79	0.4	16	1.8	75	1.70	1.70	80	.69	.43	461	162

Homozygous Polled. Heifer breeding prospect.



## 32 Bar JZ Valiant 923L {DLF,HYF,IEF,MSUDF}

Polled Hereford Bull 5/27/2023 P44475107

Het Polled

RV Valor 9444G ET

JDH Victor 719T 33Z ET  
RV Bobbi 1404



Bar JZ Hope 833A ET

NJW 73S M326 Trust 100W Et  
Bar JZ 346C Lady 701H

923L BW 83 WEANING RATIO 101 DAM'S AGE 10 L. EYE 100% R. EYE 100%

CED	BW	WW	YW	SC	MM	MCE	MCW	UDR	TEAT	CW	REA	MB	BMI	CHB
9.5	-0.1	64	98	0.7	19	3.4	97	1.40	1.50	83	.86	.18	503	139

Heterozygous Polled.



## 33 Bar JZ Valiant 951L {DLF,HYF,IEF,MSUDF}

Polled Hereford Bull 8/24/2023 P44505692

Het Polled

RV Valor 9444G ET

JDH Victor 719T 33Z ET  
RV Bobbi 1404



Bar JZ Blessing 038J

Bar JZ Buccaneer 210E  
Bar JZ Hope 837A ET

951L BW 78 WEANING RATIO 104 DAM'S AGE 2 L. EYE 100% R. EYE 100%

CED	BW	WW	YW	SC	MM	MCE	MCW	UDR	TEAT	CW	REA	MB	BMI	CHB
13.6	0.7	64	97	1.1	24	3.2	92	1.30	1.40	94	.69	.15	423	153

Heterozygous Polled. Heifer breeding prospect.





# BULLS BY - RV VALOR 9444G ET

## 34 Bar JZ Valiant 956L {DLF,HYF,IEF,MSUDF}

Polled Hereford Bull 9/3/2023 P44505736

Homo Polled

RV Valor 9444G ET

JDH Victor 719T 33Z ET  
RV Bobbi 1404



Bar JZ Sleepover 811E

Bar JZ Sleep On 738C  
Bar JZ Lottie 439C

956L BW 79 WEANING RATIO 104 DAM'S AGE 6 L. EYE 100% R. EYE 75%

CED	BW	WW	YW	SC	MM	MCE	MCW	UDR	TEAT	CW	REA	MB	BMI	CHB
13.8	-2.1	51	72	0.8	22	1.2	58	1.60	1.60	79	.44	.42	391	153

Homozygous Polled. Heifer breeding prospect.

Bar JZ sired black baldy calves are market toppers! Both the Nielsen Family and the Leesman Family are long time repeat customers of Bar JZ. Marty Norman has been using our genetics more recently. We appreciate their continued support of our bull sales, and that the bulls have done so well for them.



### KIMBALL LIVESTOCK EXCH LLC SALE REPORT-- TUESDAY, NOVEMBER 19TH, 2024 SPRING CALVES

RANCH	DESCRIPTION	NUMBER	PRICE
LEESMAN RANCH	81 BLK/BWF STEERS	609#	\$309.75
	109 BLK/BWF STEERS	536#	\$333.25
	10 RED/BLK STEERS	399#	\$386.00
	106 BLK/BWF HEIFERS	576#	\$285.75
	71 BLK/BWF HEIFERS	492#	\$315.50
	9 RED/RWF HEIFERS	587#	\$280.00
ROWLAND RANCH	15 BLK/BWF HEIFERS	389#	\$350.00
	51 BLK/BWF STEERS	567#	\$320.00
	61 BLK/BWF STEERS	481#	\$344.50
	6 BLACK STEERS	370#	\$403.00
	52 BLK/BWF HEIFERS	529#	\$301.00
	47 BLK/BWF HEIFERS	435#	\$317.00
	7 BLK/BWF HEIFERS	347#	\$352.00
BRIAN BONEBRIGHT	61 BLK/BWF STEERS	600#	\$309.25
	29 BLK/BWF STEERS	479#	\$347.00
	7 BLK/BWF STEERS	346#	\$410.00
	75 BLK/BWF HEIFERS	570#	\$291.50
ROLLING HILLS RANCH	37 BLK/BWF HEIFERS	461#	\$318.00
	26 BLK/BWF STEERS	510#	\$342.50
	10 BLACK STEERS	384#	\$398.00
	2 BLACK STEERS	612#	\$300.00
	36 BLK/BWF HEIFERS	476#	\$325.00
DAN VAN DRONGELEN	7 BLK/RED HEIFERS	383#	\$340.00
	33 BLK/BWF STEERS	597#	\$315.00
	10 BLK/BWF STEERS	424#	\$372.50
	5 RED STEERS	515#	\$316.00
	22 BLK/BWF HEIFERS	551#	\$295.00
TROY SWANSON	10 BLK/BWF HEIFERS	412#	\$331.00
	5 RED HEIFERS	544#	\$279.00
	22 BLK/BWF STEERS	506#	\$341.00
	3 BLK/BWF STEERS	366#	\$411.00
	17 BLACK HEIFERS	457#	\$315.00
TRAYCE HAEDER	19 BLK/BWF STEERS	569#	\$317.00
	12 RED/RWF STEERS	560#	\$315.00
	6 BLK/RED HEIFERS	436#	\$321.00
WARREN KIEHN	25 BLACK STEERS	573#	\$315.00
	7 BLACK STEERS	466#	\$345.00
JOSH RUSSELL	8 BLACK STEERS	467#	\$334.00
	8 BLACK HEIFERS	430#	\$312.00
	7 BLACK HEIFERS	392#	\$313.00
WES PARSONS	11 RED STEERS	554#	\$313.00
	6 RED HEIFERS	440#	\$318.00
THOMPSON FAMILY	10 BLACK STEERS	531#	\$334.00
	7 BLK/BWF HEIFERS	495#	\$285.00
DARRELL/DOREEN VOLEK	14 BLK/BWF STEERS	715#	\$262.00

### FT. PIERRE LIVESTOCK MARKET REPORT FRIDAY, NOVEMBER 15, 2024

VERY BIG RUN OF FEEDERS SAW LOTS OF BUYERS IN THE SEATS AND A VERY GOOD MARKET. BIG THANK YOU TO ALL THE CREW FOR A JOB WELL DONE, AND A BIG THANK YOU TO ALL THE BUYERS & SELLERS!!

SPRING CLVS	WT	CWT	
<b>ROSS NIELSEN, DRAPER</b>	<b>170 BBWF STRS</b>	<b>604</b>	<b>317.00</b>
	<b>63 BBWF STRS</b>	<b>500</b>	<b>350.50</b>
	<b>18 RWF STRS</b>	<b>588</b>	<b>303.00</b>
	<b>97 BWF HFRS</b>	<b>581</b>	<b>344.00</b>
	<b>112 BBWF HFRS</b>	<b>512</b>	<b>331.00</b>
	<b>16 RWF HFRS</b>	<b>545</b>	<b>331.00</b>
LEONARD/NATHAN KJERSTAD	84 BLK STRS	633	306.50
QUINN	85 BLK STRS	552	327.00
	70 BLK HFRS	543	319.00
	11 BLK HFRS	421	352.50
MIKE/MARTY FINLEY, PIERRE	83 BLK STRS	667	298.00
	84 BLK STRS	662	298.00
	94 BLK STRS	551	324.00
	10 BLK STRS	393	385.00
	92 BLK HFRS	624	294.00
	98 BBWF HFRS	539	319.00
	28 BBWF HFRS	409	360.00
VALBURG LTD, DRAPER	109 BLK STRS	404	411.00
QUENTIN GERBRACHT, FAITH	102 BLK STRS	435	393.00
	43 BLK STRS	361	411.00
KYLE SCHREMP, RIDGEVIEW	100 BLK STRS	544	335.00
	36 BLK STRS	446	370.00
	59 BLK HFRS	475	348.00
MARY KERN, PRYOR MT	85 BLK STRS	617	310.50
	39 BLK STRS	506	340.00
	54 BBWF HFRS	553	295.00
	6 BLK HFRS	461	319.00
LEE/MARY BRIGGS, MIDLAND	95 BLK STRS	618	309.50
	41 REDX STRS	590	308.50
	20 BLK STRS	491	340.00
	87 BLK HFRS	584	288.00
	14 BLK HFRS	455	323.00
MARTY NORMAN, FT PIERRE	110 BBWF STRS	516	348.00
	100 BBWF STRS	581	314.50
	32 BBWF STRS	414	392.50
	99 BLK HFRS	536	319.00
	46 BBWF HFRS	534	322.00
	67 BBWF HFRS	440	317.00
	6 BLK HFRS	324	377.50
GOEBEL FARMS, LEBANON	93 BBWF STRS	586	315.00
	99 BBWF STRS	466	371.00
	10 RWF STRS	507	321.00
	11 BLK/RED STRS	340	395.00



# BULLS BY - BAR JZ INSIGHT 334J

## Bar JZ Insight 334J - Reference Sire

{DLF,HYF,IEF,MSUDF,MDF,DBC}

Homozygous Polled 3/21/2021 P44248690

Sire: Innisfail WHR X651/723 4013 ET

Dam: Bar JZ Topaz 547C

Lots: Bulls 35-46. Bred Heifers 139, 150, 151. Open heifer 182.

**Insight.** Our 2022 co-high seller going to Sam Smith. His progeny are big bodied and correct. His birth weight to weaning weight and yearling weight spread is exceptional.

CED	BW	WW	YW	SC	MM	MCE	MCW	UDR	TEAT	CW	REA	MB	BMI	CHB
8.1	-0.4	71	117	2.4	29	7.6	92	1.40	1.30	88	.54	.35	438	160



## 35 Bar JZ Perception 914L {DLF,HYF,IEF,MSUDF,MDF,DBF}

Polled Hereford Bull 5/12/2023 P44472762

Homo Polled

Bar JZ Insight 334J

Innisfail WHR X651/723 4013 ET

Bar JZ Topaz 547C

Churchill Pilgrim 632D ET

Bar JZ Glimmer 685D



Bar JZ Poppy 428G

914L BW 75 WEANING RATIO 98 DAM'S AGE 4 L. EYE 100% R. EYE 100%

CED	BW	WW	YW	SC	MM	MCE	MCW	UDR	TEAT	CW	REA	MB	BMI	CHB
10.8	0.4	61	106	1.9	27	10.6	77	1.50	1.50	71	.46	.14	489	120

Homozygous Polled by pedigree. We used for natural service.



## 36 Bar JZ Perception 852L {DLF,HYF,IEF,MSUDF,MDF,DBC}

Polled Hereford Bull 5/10/2023 P44471659

Homo Polled

Bar JZ Insight 334J

Innisfail WHR X651/723 4013 ET

Bar JZ Topaz 547C

Churchill Pilgrim 632D ET

Bar JZ Hope 026A

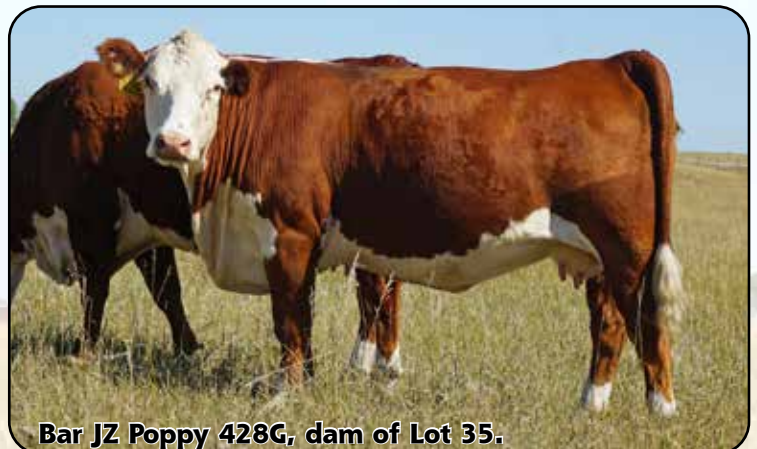


Bar JZ Poppy 061F

852L BW 88 WEANING RATIO 111 DAM'S AGE 5 L. EYE 100% R. EYE 100%

CED	BW	WW	YW	SC	MM	MCE	MCW	UDR	TEAT	CW	REA	MB	BMI	CHB
7.1	0.5	64	103	1.6	32	2.4	95	1.40	1.30	79	.69	.05	458	118

Homozygous Polled.





# BULLS BY - BAR JZ INSIGHT 334J

**37** Bar JZ Perception 854L {DLF,HYF,IEF,MSUDF,MDF,DBC}  
Polled Hereford Bull 5/11/2023 P44471701

Homo Polled

Bar JZ Insight 334J

Innisfail WHR X651/723 4013 ET  
Bar JZ Topaz 547C  
TH 49U 719T Sheyenne 3X  
Bar JZ Corabelle 014E



Bar JZ Shyanna 297G

854L BW 82 WEANING RATIO 105 DAM'S AGE 4 L. EYE 100% R. EYE 100%

CED	BW	WW	YW	SC	MM	MCE	MCW	UDR	TEAT	CW	REA	MB	BMI	CHB
7.9	0.3	69	107	1.7	32	8.1	81	1.30	1.30	82	.32	.13	473	127

Homozygous Polled.



**38** Bar JZ Perception 856L {DLF,HYF,IEF,MSUDF,MDF,DFB}  
Polled Hereford Bull 5/11/2023 P44474619

Homo Polled

Bar JZ Insight 334J

Innisfail WHR X651/723 4013 ET  
Bar JZ Topaz 547C  
Bar JZ Buccaneer 210E  
Bar JZ Serendipity 147F



Bar JZ Blessing 681H

856L BW 71 WEANING RATIO 105 DAM'S AGE 3 L. EYE 100% R. EYE 100%

CED	BW	WW	YW	SC	MM	MCE	MCW	UDR	TEAT	CW	REA	MB	BMI	CHB
18.8	-3.6	61	92	1.7	32	15.5	60	1.40	1.40	75	.48	.25	479	134

Homozygous Polled. Heifer breeding prospect.



**39** Bar JZ Perception 859L {DLF,HYF,IEF,MSUDF,MDF,DBC}  
Polled Hereford Bull 5/12/2023 P44475144

Homo Polled

Bar JZ Insight 334J

Innisfail WHR X651/723 4013 ET  
Bar JZ Topaz 547C  
Frenzen Bar JZ Bruiser B30  
Bar JZ Tappen 102B



Bar JZ Brynn 864E

859L BW 75 WEANING RATIO 109 DAM'S AGE 6 L. EYE 100% R. EYE 100%

CED	BW	WW	YW	SC	MM	MCE	MCW	UDR	TEAT	CW	REA	MB	BMI	CHB
6.6	0.9	74	116	2.0	38	8.5	111	1.30	1.20	91	.79	.24	443	152

Homozygous Polled. Heifer breeding prospect.



**40** Bar JZ Perception 866L {DLF,HYF,IEF,MSUDF,MDF,DBC}  
Polled Hereford Bull 5/14/2023 P44471688

Homo Polled

Bar JZ Insight 334J

Innisfail WHR X651/723 4013 ET  
Bar JZ Topaz 547C  
Frenzen Bar JZ Bruiser B30  
Bar JZ Sapphire 944E



Bar JZ Brynn 245G

866L BW 79 WEANING RATIO 98 DAM'S AGE 4 L. EYE 100% R. EYE 100%

CED	BW	WW	YW	SC	MM	MCE	MCW	UDR	TEAT	CW	REA	MB	BMI	CHB
11.2	0.8	59	103	1.3	31	12.2	58	1.50	1.40	66	.42	.25	429	120

Homozygous Polled. Heifer breeding prospect.





# BULLS BY - BAR JZ INSIGHT 334J

**41** | **Bar JZ Perception 874L** {DLF,HYF,IEF,MSUDF,MDF,DBF}  
 Polled Hereford Bull 5/16/2023 P44472767

Polled

Bar JZ Insight 334J

Innisfail WHR X651/723 4013 ET  
 Bar JZ Topaz 547C  
 Bar JZ Kickback 227E ET  
 Bar JZ Glimmer 672D



Bar JZ Kindness 448G

874L BW 95 WEANING RATIO 95 DAM'S AGE 4 L. EYE 100% R. EYE 100%

CED	BW	WW	YW	SC	MM	MCE	MCW	UDR	TEAT	CW	REA	MB	BMI	CHB
-2.5	5.5	74	125	2.3	27	1.9	126	1.50	1.30	79	.60	.01	341	123

Polled.



**42** | **Bar JZ Perception 904L** {DLF,HYF,IEF,MSUDF,MDF,DBF}  
 Polled Hereford Bull 5/20/2023 P44471662

Homo Polled

Bar JZ Insight 334J

Innisfail WHR X651/723 4013 ET  
 Bar JZ Topaz 547C  
 Mohican THM Excede Z426  
 Bar JZ Whitney 913A



Bar JZ Eloquent 079F

904L BW 88 WEANING RATIO 98 DAM'S AGE 5 L. EYE 100% R. EYE 100%

CED	BW	WW	YW	SC	MM	MCE	MCW	UDR	TEAT	CW	REA	MB	BMI	CHB
2.4	1.6	67	113	1.6	23	1.8	112	1.30	1.20	84	.51	.23	351	146

Homozygous Polled.



**43** | **Bar JZ Perception 908L** {DLF,HYF,IEF,MSUDF,MDF,DBC}  
 Polled Hereford Bull 5/20/2023 P44469761

Homo Polled

Bar JZ Insight 334J

Innisfail WHR X651/723 4013 ET  
 Bar JZ Topaz 547C  
 Frenzen Bar JZ Bruiser B30  
 Bar JZ Hope 837A



Bar JZ Brynn 009E

908L BW 84 WEANING RATIO 94 DAM'S AGE 6 L. EYE 50% R. EYE 100%

CED	BW	WW	YW	SC	MM	MCE	MCW	UDR	TEAT	CW	REA	MB	BMI	CHB
10.3	-0.9	62	99	2.1	31	7.2	78	1.40	1.40	78	.45	.28	477	147

Homozygous Polled.



Bar JZ Brynn 009E, dam of Lot 43.



# BULLS BY - BAR JZ INSIGHT 334J

## 44 Bar JZ Perception 925L {DLF,HYF,IEF,MSUDF,MDF,DBC}

Polled Hereford Bull 5/27/2023 P44474993

Homo Polled

Bar JZ Insight 334J

Innisfail WHR X651/723 4013 ET

Bar JZ Topaz 547C

Frenzen Bar JZ Bruiser B30

Bar JZ Paisley 159B



Bar JZ Brynn 795E

925L BW 90 WEANING RATIO 108 DAM'S AGE 6 L. EYE 100% R. EYE 25%

CED	BW	WW	YW	SC	MM	MCE	MCW	UDR	TEAT	CW	REA	MB	BMI	CHB
4.5	-0.3	60	94	1.5	30	6.7	79	1.60	1.60	62	.51	.42	495	127

Homozygous Polled.



## 45 Bar JZ Perception 865L {DLF,HYF,IEF,MSUDF,MDF,DBC}

Polled Hereford Bull 5/14/2023 P44474624

Homo Polled

Bar JZ Insight 334J

Innisfail WHR X651/723 4013 ET

Bar JZ Topaz 547C

Frenzen Bar JZ Bruiser B30

Bar JZ Valerie 718D



Bar JZ Brynn 687H

865L BW 73 WEANING RATIO 97 DAM'S AGE 3 L. EYE 100% R. EYE 100%

CED	BW	WW	YW	SC	MM	MCE	MCW	UDR	TEAT	CW	REA	MB	BMI	CHB
6.8	-0.8	64	99	1.7	30	8.8	94	1.30	1.30	72	.39	.22	430	126

Homozygous Polled. Heifer breeding prospect.



## 46 Bar JZ Perception 855L {DLF,HYF,IEF,MSUDF,MDF,DBF}

Polled Hereford Bull 5/11/2023 P44469806

Homo Polled

Bar JZ Insight 334J

Innisfail WHR X651/723 4013 ET

Bar JZ Topaz 547C

TH 49U 719T Shyenenne 3X

Bar JZ Brynn 610D ET



Bar JZ Shyanna 046F

855L BW 75 WEANING RATIO 100 DAM'S AGE 5 L. EYE 90% R. EYE 100%

CED	BW	WW	YW	SC	MM	MCE	MCW	UDR	TEAT	CW	REA	MB	BMI	CHB
13.1	-0.1	67	112	1.5	29	9.1	76	1.40	1.30	83	.48	.26	428	149

Homozygous Polled by pedigree. Heifer breeding prospect.



## 47 Bar JZ Perception 950L {DLF,HYF,IEF,MSUDF,MDF,DBP}

Polled Hereford Bull 8/20/2023 P44505676

Homo Polled

Bar JZ Insight 334J

Innisfail WHR X651/723 4013 ET

Bar JZ Topaz 547C

Bar JZ Surgical Strike 014D ET

Bar JZ Glory 319C



Bar JZ Serendipity 119F

950L BW 70 WEANING RATIO 92 DAM'S AGE 5 L. EYE 100% R. EYE 100%

CED	BW	WW	YW	SC	MM	MCE	MCW	UDR	TEAT	CW	REA	MB	BMI	CHB
9.1	-0.2	63	104	2.3	24	9.6	97	1.20	1.20	77	.72	.42	397	153

Homozygous Polled by pedigree. Heifer breeding prospect.





# BULLS BY - BAR JZ VANQUISH 329J

## Bar JZ Vanquish 329J - Reference Sire {DLF,HYF,IEF,MSUDF}

Homozygous Polled 3/8/2021 P44248339

Sire: RV Valor 9444G

Dam: Bar JZ Heartstrings 325G

Lots: Bulls 47-50. Bred heifers 132-137.

Vanquish was one of the most sought-after bulls in our 2022 sale going to Gant Polled Herefords. He was the highest post-weaning gainer, and exceptionally docile. All of his dam's calves have weaned heavier than average. Semen available.

Co-owned with Gant Polled Herefords.

CED	BW	WW	YW	SC	MM	MCE	MCW	UDR	TEAT	CW	REA	MB	BMI	CHB
10.6	-1.0	61	104	0.9	13	0.2	90	1.40	1.40	69	.31	.23	299	118



## 48 Bar JZ Triumph 897L {DLF,HYF,IEF,MSUDF}

Polled Hereford Bull 5/19/2023 P44472752

Homo Polled

Bar JZ Vanquish 329J

RV Valor 9444G ET

Bar JZ Heartstrings 325G

Frenzen Bar JZ Bruiser B30

Bar JZ Glimmer 484C



Bar JZ Brynn 366G

897L BW 87 WEANING RATIO 101 DAM'S AGE 4 L. EYE 100% R. EYE 100%

CED	BW	WW	YW	SC	MM	MCE	MCW	UDR	TEAT	CW	REA	MB	BMI	CHB
1.7	2.2	69	116	1.3	29	3.8	98	1.30	1.30	77	.60	.08	309	121

Homozygous Polled.



## 49 Bar JZ Triumph 842L {DLF,HYF,IEF,MSUDF}

Polled Hereford Bull 5/04/2023 P44474495

Homo Polled

Bar JZ Vanquish 329J

RV Valor 9444G ET

Bar JZ Heartstrings 325G

Bar JZ Buccaneer 210E

Bar JZ Lottie 379C



Bar JZ Blessing 585H

842L BW 64 WEANING RATIO 94 DAM'S AGE 3 L. EYE 100% R. EYE 100%

CED	BW	WW	YW	SC	MM	MCE	MCW	UDR	TEAT	CW	REA	MB	BMI	CHB
17.9	-3.2	52	81	2.0	29	9.3	66	1.30	1.40	69	.35	.22	395	116

Homozygous Polled. Heifer breeding prospect.



## 50 Bar JZ Triumph 869L {DLF,HYF,IEF,MSUDF,MDF,DBF}

Polled Hereford Bull 5/14/2023 P44474554

Homo Polled

Bar JZ Vanquish 329J

RV Valor 9444G ET

Bar JZ Heartstrings 325G

Innisfail WHR X651/723 4013 ET

Bar JZ Hannah 579D ET



Bar JZ Imagination 658H

869L BW 81 WEANING RATIO 103 DAM'S AGE 3 L. EYE 100% R. EYE 100%

CED	BW	WW	YW	SC	MM	MCE	MCW	UDR	TEAT	CW	REA	MB	BMI	CHB
10.0	1.1	73	108	1.7	29	3.3	80	1.30	1.30	82	.37	.26	459	138

Homozygous Polled.





# BULLS BY - 329J & BAR JZ FABULOUS 207H

## 51 Bar JZ Triumph 918L

Polled Hereford Bull 5/22/2023 P44469770

Polled

Bar JZ Vanquish 329J RV Valor 9444G ET  
Bar JZ Heartstrings 325G  
Bar JZ Corabelle 014E Bar JZ Cornerstone 627C  
Bar JZ Georgia 386C

918L BW 97 WEANING RATIO 108 DAM'S AGE 6 L. EYE 100% R. EYE 100%

CED	BW	WW	YW	SC	MM	MCE	MCW	UDR	TEAT	CW	REA	MB	BMI	CHB
1.7	3.7	69	108	1.0	19	-1.0	101	1.30	1.30	74	.41	-.04	298	99

Polled.



## Bar JZ Fabulous 207H - Reference Sire {DLF,HYF,IEF,MSUDF}

Homozygous Polled 3/25/2020 P44139305

Sire: Innisfail WHR X651/723 4013 ET

Dam: Bar JZ Heartstrings 960E

Lots: Bulls 51-54.

Fabulous comes from a great line of cows that have stayed in the herd for years. He has done a good job of keeping birthweights moderate to low.

CED	BW	WW	YW	SC	MM	MCE	MCW	UDR	TEAT	CW	REA	MB	BMI	CHB
6.7	1.7	61	101	0.5	20	-0.4	106	1.40	1.30	77	.39	.20	458	547



## 52 Bar JZ Fanfare 940L {DLF,HYF,IEF,MSUDF}

Polled Hereford Bull 6/21/2023 P44475133

Homo Polled

Bar JZ Fabulous 207H Innisfail WHR X651/723 4013 ET  
Bar JZ Heartstrings 960E  
Bar JZ Brynn 248G Frenzen Bar JZ Bruiser B30  
Bar JZ Shyanna 773E

940L BW 75 WEANING RATIO 97 DAM'S AGE 4 L. EYE 100% R. EYE 100%

CED	BW	WW	YW	SC	MM	MCE	MCW	UDR	TEAT	CW	REA	MB	BMI	CHB
4.8	0.8	68	100	0.7	31	1.7	107	1.30	1.20	82	.40	.10	399	131

Homozygous Polled. Heifer breeding prospect.



## 53 Bar JZ Fanfare 944L {DLF,HYF,IEF,MSUDF}

Polled Hereford Bull 7/7/2023 P44481823

Homo Polled

Bar JZ Fabulous 207H Innisfail WHR X651/723 4013 ET  
Bar JZ Heartstrings 960E  
Bar JZ Heartstrings 901E Bar JZ Hearthstone 426B ET  
Bar JZ Danielle 148X

944L BW 65 WEANING RATIO n/a DAM'S AGE 6 L. EYE 100% R. EYE 90%

CED	BW	WW	YW	SC	MM	MCE	MCW	UDR	TEAT	CW	REA	MB	BMI	CHB
6.4	1.2	55	90	0.7	21	-5.1	92	1.30	1.30	61	.13	.02	361	92

Homozygous Polled. Twin. Heifer breeding prospect.





# BULLS BY - BAR JZ FABULOUS 207H

**54 Bar JZ Fanfare 957L** {DLF,HYF,IEF,MSUDF}  
 Polled Hereford Bull 7/29/2023 P44505744



Bar JZ Fabulous 207H

Innisfail WHR X651/723 4013 ET  
 Bar JZ Heartstrings 960E  
 Churchill Broadway 858F  
 Bar JZ Paisley 159B



Bar JZ Dolly 615H

957L BW 84 WEANING RATIO 96 DAM'S AGE 3 L. EYE 100% R. EYE 100%

CED	BW	WW	YW	SC	MM	MCE	MCW	UDR	TEAT	CW	REA	MB	BMI	CHB
4.0	2.6	68	114	0.6	26	-0.5	102	1.40	1.40	79	.44	.32	461	150

Homozygous Polled.



**55 Bar JZ Fanfare 939L** {DLF,HYF,IEF,MSUDF}  
 Polled Hereford Bull 6/15/2023 P44471691



Bar JZ Fabulous 207H

Innisfail WHR X651/723 4013 ET  
 Bar JZ Heartstrings 960E  
 Bar JZ Dutchman 310E  
 Bar JZ Topaz 021D



Bar JZ Tulip 251G

939L BW 72 WEANING RATIO 99 DAM'S AGE 4 L. EYE 100% R. EYE 0

CED	BW	WW	YW	SC	MM	MCE	MCW	UDR	TEAT	CW	REA	MB	BMI	CHB
10.5	-1.1	51	75	0.7	21	1.9	66	1.20	1.40	65	.35	.25	388	123

Homozygous Polled. Heifer breeding prospect.



**56 Bar JZ Borderline 915L** {DLF,HYF,IEF,MSUDF}  
 Polled Hereford Bull 5/21/2023 P44471670



TH Frontier 174E

TH 403A 475Z Pioneer 358C ET  
 FTF Trusting Lady 312A  
 NJW 33TB 100W Trust 167Y  
 Bar JZ Rebecca 954W



Bar JZ Tequila Rose 126F

915L BW 80 WEANING RATIO 102 DAM'S AGE 5 L. EYE 100% R. EYE 75%

CED	BW	WW	YW	SC	MM	MCE	MCW	UDR	TEAT	CW	REA	MB	BMI	CHB
6.5	1.7	56	89	0.7	35	0.2	111	1.30	1.20	70	.46	.11	458	126

Homozygous Polled.



**57 Bar JZ Rimrider 886L** {DLF,HYF,IEF,MSUDF}  
 Polled Hereford Bull 5/17/2023 P44471685



NJW 139C 103C Ridge 254G

NJW 73S 38W Ridge 103C ET  
 NJW 149Z 88X Lexy 139C ET  
 TH 49U 719T Sheyenne 3X  
 Bar JZ Crimson 776E ET



Bar JZ Shyanna 234G

886L BW 76 WEANING RATIO 101 DAM'S AGE 4 L. EYE 100% R. EYE 100%

CED	BW	WW	YW	SC	MM	MCE	MCW	UDR	TEAT	CW	REA	MB	BMI	CHB
13.6	-0.8	59	81	1.7	36	7.0	81	1.60	1.80	63	.20	-.07	491	81

Homozygous Polled by pedigree. Heifer breeding prospect.





# BULLS

## 58 Bar JZ Maverick 845L

Polled Hereford Bull 5/07/2023 P44472747

Scurs

Bar JZ Buccaneer 210E Frenzen Bar JZ Bruiser B30  
Bar JZ Fern 531Y  
Bar JZ Tappen 351C ET Hyalite On Target 936  
Bar JZ Rene 872W

845L BW 95 WEANING RATIO 107 DAM'S AGE 8 L. EYE 100% R. EYE 100%

CED	BW	WW	YW	SC	MM	MCE	MCW	UDR	TEAT	CW	REA	MB	BMI	CHB
2.6	2.5	69	105	1.9	35	7.2	79	1.40	1.40	73	.57	.09	376	114

Scurs.



## 59 Bar JZ Griffin 922L {DLF,HYF,IEF,MSUDF}

Polled Hereford Bull 5/26/2023 P44469757

Het Polled

Bar JZ Broadgauge 184H Churchill Broadway 858F  
Bar JZ Wendy 343Y  
Bar JZ Lollipop 008A Bar JZ This Time 419X  
Bar JZ Isabella 965W

922L BW 80 WEANING RATIO 97 DAM'S AGE 10 L. EYE 100% R. EYE 100%

CED	BW	WW	YW	SC	MM	MCE	MCW	UDR	TEAT	CW	REA	MB	BMI	CHB
9.6	-1.1	48	79	1.2	20	1.1	74	1.50	1.40	70	.28	.46	475	154

Heterozygous Polled.



## 60 Bar JZ Griffin 953L {DLF,HYF,IEF,MSUDF}

Polled Hereford Bull 8/30/2023 P44505707

Homo Polled

Bar JZ Broadgauge 184H Churchill Broadway 858F  
Bar JZ Wendy 343Y  
Bar JZ Kindness 461G Bar JZ Kickback 227E Et  
Bar JZ Tappen 326C ET

953L BW 99 WEANING RATIO 117 DAM'S AGE 4 L. EYE 100% R. EYE 60%

CED	BW	WW	YW	SC	MM	MCE	MCW	UDR	TEAT	CW	REA	MB	BMI	CHB
-0.4	4.3	69	106	2.1	28	-3.4	117	1.30	1.10	68	.28	.16	371	115

Homozygous Polled.





# REFERENCE & SERVICE SIRES

## Bar JZ On Demand(619K) - Ref. & Service Sire {DLF,HYF,IEF,MSUDF,MDF,DBF}

Homozygous Polled 3/26/2022 P44355795  
Sire: RV Valor 9444G ET  
Dam: Bar JZ Hannah 087B  
Lots: Open heifers 160-167.

Seldom do we find a bull that can stamp a look like **On Demand** and bring his low birth and high growth numbers. Our 52 calves averaged 78 lbs at birth and weaned at a 103 ratio. We used him even more this breeding season. You can see his work in top herds around the country, including owners, Hoffman Ranch. Hoffman Ranch now owns his top-producing dam as well.

CED	BW	WW	YW	SC	MM	MCE	MCW	UDR	TEAT	CW	REA	MB	BMI	CHB
14.1	0.9	79	121	1.6	26	3.9	98	1.50	1.50	99	.62	.24	426	152



## SHF Horizon D287 H022 ET - Service Sire {DLF,HYF,IEF,MSUDF,MDF,DBF}

Homozygous Polled 1/29/2020 P44123593  
Sire: SHF Daybreak Y02 D287 ET  
Dam: SHF Time 001A D81

**Horizon.** We used Horizon on heifers and were very pleased with the way they were born. His growth for that amount of CED is very good, and by the time they reach a long yearling, they are some of the most appealing in the pen. His full sister is outstanding from an udder quality, fleshing ability, and mature size standpoint.

CED	BW	WW	YW	SC	MM	MCE	MCW	UDR	TEAT	CW	REA	MB	BMI	CHB
15.0	-1.7	70	106	1.3	26	7.8	120	1.70	1.70	80	.47	.38	488	147



## TH 523F 738C Sleep On 163H - Service Sire {DLF,HYF,IEF,MSUDF,MDF,DBF}

Homozygous Polled 1/16/2020 P44140749  
Sire: Bar JZ Sleep On 738C  
Dam: TH 4021 358C Jewell 523F ET

A Calving Ease-Phenotype standout. **Sleep On 163H** offers Calving Ease with strong maternal and end product value in one complete package. Look for SLEEP ON to sire attractive, well-balanced cattle that are conservatively marked, with good capacity and muscle for the calving ease he offers.

CED	BW	WW	YW	SC	MM	MCE	MCW	UDR	TEAT	CW	REA	MB	BMI	CHB
12.8	-2.6	58	83	1.0	41	-1.3	72	1.30	1.30	61	.20	.34	358	125



## Churchill Kingdom 128J ET - Service Sire {DLF,HYF,IEF,MSUDF,MDF,DBF}

Homozygous Polled 1/12/2021 P44267937  
Sire: DM All Around 904G ET  
Dam: BR Validated B413 6035 7098

**Kingdom.** His dam is the rockstar donor 7098 who is creating an absolute buzz in the breed with everything she produces; this is your chance to tie into a dominant cow line. A true herd bull look combined with outstanding data package.

CED	BW	WW	YW	SC	MM	MCE	MCW	UDR	TEAT	CW	REA	MB	BMI	CHB
10.3	0.5	62	94	1.6	34	13.0	91	1.50	1.50	89	.92	.44	502	169





# BRED HEIFERS SIRED BY - SHF Houston D287 H086

## 101 Bar JZ Holiday 538L

Polled Hereford Cow 5/16/2023 P44475192

SHF Houston D287 H086 SHF Daybreak Y02 D287 ET  
 SHF Miss 14 20Z D223  
 Bar JZ Topaz 900E Bar JZ Trust Fund 245A ET  
 Bar JZ Jasmine 930A

CED	BW	WW	YW	SC	MM	MCE	MCW	UDR	TEAT	CW	REA	MB	BMI	CHB
4.5	2.7	68	109	1.4	26	0.4	102	1.50	1.40	91	.82	.21	432	160

538L. Safe to Churchill Kingdom 128J ET on 4/8/2025.



## 102 Bar JZ Holiday 556L

Polled Hereford Cow 5/17/2023 P44471714

SHF Houston D287 H086 SHF Daybreak Y02 D287 ET  
 SHF Miss 14 20Z D223  
 Bar JZ Poppy 338G Churchill Pilgrim 632D ET  
 Bar JZ Kylie Jo 843U

CED	BW	WW	YW	SC	MM	MCE	MCW	UDR	TEAT	CW	REA	MB	BMI	CHB
5.4	2.6	67	107	1.5	27	4.0	96	1.40	1.30	91	.73	.14	432	149

556L. Safe to Churchill Kingdom 128J ET on 4/8/2025.



## 103 Bar JZ Holiday 568L

Polled Hereford Cow 5/18/2023 P44474525

SHF Houston D287 H086 SHF Daybreak Y02 D287 ET  
 SHF Miss 14 20Z D223  
 Bar JZ Blessing 612H Bar JZ Buccaneer 210E  
 Bar JZ Sapphire 806E

CED	BW	WW	YW	SC	MM	MCE	MCW	UDR	TEAT	CW	REA	MB	BMI	CHB
6.1	2.7	75	114	1.6	32	2.5	79	1.40	1.40	94	.85	.21	451	152

568L. Safe to TH 523F 738C Sleep On 163H on 4/8/2025.



## 104 Bar JZ Holiday 570L

Polled Hereford Cow 5/19/2023 P44474633

SHF Houston D287 H086 SHF Daybreak Y02 D287 ET  
 SHF Miss 14 20Z D223  
 Bar JZ Blessing 699H Bar JZ Buccaneer 210E  
 Bar JZ Poppy 061F

CED	BW	WW	YW	SC	MM	MCE	MCW	UDR	TEAT	CW	REA	MB	BMI	CHB
3.4	3.1	74	116	1.7	31	3.2	95	1.50	1.50	90	.80	.13	444	147

570L. Safe to Bar JZ On Demand on 4/7/2025.





# BRED HEIFERS SIRED BY - SHF Houston D287 H086

## 105 Bar JZ Holiday 582L

Polled Hereford Cow 5/20/2023 P44472759

SHF Houston D287 H086 SHF Daybreak Y02 D287 ET  
 SHF Miss 14 20Z D223  
 Bar JZ Shyanna 403G TH 49U 719T Shyenenne 3X  
 Bar JZ Firestorm 475Y

CED	BW	WW	YW	SC	MM	MCE	MCW	UDR	TEAT	CW	REA	MB	BMI	CHB
0.8	2.3	75	111	1.6	31	2.1	88	1.30	1.30	92	.69	.14	420	145

582L. Safe to Bar JZ On Demand on 4/7/2025.



## 106 Bar JZ Holiday 590L

Polled Hereford Cow 5/22/2023 P44471706

SHF Houston D287 H086 SHF Daybreak Y02 D287 ET  
 SHF Miss 14 20Z D223  
 Bar JZ Heartstrings 325G Bar JZ Hearthstone 426B ET  
 Bar JZ Danielle 148X

CED	BW	WW	YW	SC	MM	MCE	MCW	UDR	TEAT	CW	REA	MB	BMI	CHB
4.0	2.2	70	116	1.4	26	0.0	111	1.40	1.30	83	.60	.06	414	127

590L. Safe to Churchill Kingdom 128J ET on 4/8/2025.



## 107 Bar JZ Holiday 591L

Polled Hereford Cow 5/22/2023 P44474548

SHF Houston D287 H086 SHF Daybreak Y02 D287 ET  
 SHF Miss 14 20Z D223  
 Bar JZ Imagination 631H Innisfail WHR X651/723 4013 ET  
 Bar JZ Primrose 750U

CED	BW	WW	YW	SC	MM	MCE	MCW	UDR	TEAT	CW	REA	MB	BMI	CHB
5.6	2.8	72	110	1.3	27	1.7	109	1.30	1.20	87	.68	.26	440	154

591L. Safe to Bar JZ On Demand on 4/7/2025.



The 5th generation rancher learning to artificially inseminate from his Grandpa. "Are you through the first ring yet, Grandpa?"



Bar JZ Heartstrings 325G, dam of Lot 106



# BRED HEIFERS SIRED BY - RV VALOR 9444G ET

## 108 Bar JZ Vivian 360L

Polled Hereford Cow 3/01/2023 P44473165

RV Valor 9444G ET JDH Victor 719T 33Z ET  
 RV Bobbi 1404  
 Bar JZ Tonja 892J Bar JZ Sleep Tight 412F  
 Bar JZ Topaz 758D

CED	BW	WW	YW	SC	MM	MCE	MCW	UDR	TEAT	CW	REA	MB	BMI	CHB
12.3	-1.8	49	75	1.2	22	2.7	66	1.50	1.60	80	.45	.22	443	143

360L. Safe to SHF Horizon H022 on 4/7/2025.



## 109 Bar JZ Vivian 364L

Polled Hereford Cow 3/03/2023 P44469787

RV Valor 9444G ET JDH Victor 719T 33Z ET  
 RV Bobbi 1404  
 Bar JZ Shirley 029J Bar JZ Sherlock 530G  
 Bar JZ Sleepover 362G

CED	BW	WW	YW	SC	MM	MCE	MCW	UDR	TEAT	CW	REA	MB	BMI	CHB
10.7	-1.4	61	87	1.4	25	2.3	84	1.50	1.60	87	.51	.22	422	149

364L. Safe to SHF Horizon H022 on 4/8/2025.



## 110 Bar JZ Vivian 367L

Polled Hereford Cow 3/04/2023 P44469785

RV Valor 9444G ET JDH Victor 719T 33Z ET  
 RV Bobbi 1404  
 Bar JZ Shirley 028J Bar JZ Sherlock 530G  
 Bar JZ Topaz 203F

CED	BW	WW	YW	SC	MM	MCE	MCW	UDR	TEAT	CW	REA	MB	BMI	CHB
9.6	-0.8	61	95	1.1	21	2.6	96	1.60	1.50	87	.54	.21	416	147

367L. Safe to SHF Horizon H022 on 4/8/2025.



## 111 Bar JZ Vivian 369L

Polled Hereford Cow 3/07/2023 P44473167

RV Valor 9444G ET JDH Victor 719T 33Z ET  
 RV Bobbi 1404  
 Bar JZ Maisey 881J TH Masterplan 183F  
 Bar JZ Fern 781Z

CED	BW	WW	YW	SC	MM	MCE	MCW	UDR	TEAT	CW	REA	MB	BMI	CHB
8.8	0.9	65	108	1.1	17	2.3	95	1.50	1.60	92	.68	.29	394	160

369L. Safe to SHF Horizon H022 on 4/7/2025.





# BRED HEIFERS SIRED BY - RV VALOR 9444G ET

## 112 Bar JZ Vivian 397L

Polled Hereford Cow      3/15/2023      P44475646

RV Valor 9444G ET      JDH Victor 719T 33Z ET  
 RV Bobbi 1404  
 Bar JZ Imagination 990J      Innisfail WHR X651/723 4013 ET  
 Bar JZ Brynn 610D ET

CED	BW	WW	YW	SC	MM	MCE	MCW	UDR	TEAT	CW	REA	MB	BMI	CHB
1.9	4.7	75	118	1.1	20	1.7	95	1.50	1.60	90	.55	.26	449	150

397L. Safe to TH 523F 738C Sleep On 163H on 4/8/2025.



## 113 Bar JZ Vivian 416L

Polled Hereford Cow      3/19/2023      P44475635

RV Valor 9444G ET      JDH Victor 719T 33Z ET  
 RV Bobbi 1404  
 Bar JZ Pansy 964J      Bar JZ Pilgrim 433F  
 Bar JZ Heartstrings 925E

CED	BW	WW	YW	SC	MM	MCE	MCW	UDR	TEAT	CW	REA	MB	BMI	CHB
12.7	-2.5	52	87	0.9	17	3.2	103	1.50	1.60	83	.59	.22	424	147

416L. Safe to SHF Horizon H022 on 4/8/2025.



## 114 Bar JZ Vivian 474L

Polled Hereford Cow      5/04/2023      P44472757

RV Valor 9444G ET      JDH Victor 719T 33Z ET  
 RV Bobbi 1404  
 Bar JZ Zoey 380C      MSU Xerox 20X  
 Bar JZ Scarlet 740U

CED	BW	WW	YW	SC	MM	MCE	MCW	UDR	TEAT	CW	REA	MB	BMI	CHB
9.8	-0.3	57	87	1.0	16	2.2	80	1.40	1.50	83	.46	.27	380	150

474L. Safe to TH 523F 738C Sleep On 163H on 4/8/2025.



## 115 Bar JZ Vivian 480L

Polled Hereford Cow      5/08/2023      P44472770

RV Valor 9444G ET      JDH Victor 719T 33Z ET  
 RV Bobbi 1404  
 Bar JZ Stacey 463G      Bar JZ Statesman 105D  
 Bar JZ Hope 243B

CED	BW	WW	YW	SC	MM	MCE	MCW	UDR	TEAT	CW	REA	MB	BMI	CHB
12.3	-0.9	56	84	1.0	23	2.6	99	1.30	1.40	85	.58	.20	477	144

480L. Safe to TH 523F 738C Sleep On 163H on 4/7/2025.





# BRED HEIFERS SIRED BY - RV VALOR 9444G ET

## 116 Bar JZ Vivian 488L

Polled Hereford Cow 5/10/2023 P44474642

RV Valor 9444G ET JDH Victor 719T 33Z ET  
 RV Bobbi 1404  
 Bar JZ Carefree 729H Frenzen Freebird F53  
 Bar JZ Serendipity 152F

CED	BW	WW	YW	SC	MM	MCE	MCW	UDR	TEAT	CW	REA	MB	BMI	CHB
4.9	2.8	65	105	1.3	24	0.5	106	1.60	1.60	81	.48	.20	424	140

480L. Safe to TH 523F 738C Sleep On 163H on 4/8/2025.



## 117 Bar JZ Vivian 501L

Polled Hereford Cow 5/13/2023 P44471689

RV Valor 9444G ET JDH Victor 719T 33Z ET  
 RV Bobbi 1404  
 Bar JZ Shyanna 246G TH 49U 719T Sheyenne 3X  
 Bar JZ Heartstrings 901E

CED	BW	WW	YW	SC	MM	MCE	MCW	UDR	TEAT	CW	REA	MB	BMI	CHB
7.8	0.1	68	103	1.4	25	2.1	106	1.40	1.40	91	.56	.15	403	139

480L. Safe to TH 523F 738C Sleep On 163H on 4/8/2025.



## 118 Bar JZ Vivian 526L

Polled Hereford Cow 5/16/2023 P44471664

RV Valor 9444G ET JDH Victor 719T 33Z ET  
 RV Bobbi 1404  
 Bar JZ Hannah 087B NJW 73S W18 Homegrown 8YET  
 Bar JZ Virginia 347Y

CED	BW	WW	YW	SC	MM	MCE	MCW	UDR	TEAT	CW	REA	MB	BMI	CHB
12.2	0.4	64	104	1.3	27	4.1	99	1.50	1.60	96	.59	.14	446	149

526L. Safe to TH 523F 738C Sleep On 163H on 4/8/2025.

Full sister to Bar JZ On Demand.



**Bar JZ Hannah 087B.** Dam of On Demand and a top lifetime producer. Her lineage includes several of our best. She is now owned by Hoffman Ranch. Lifetime ratios of BW 96, WW 104, YW 106.



# BRED HEIFERS SIRED BY - VALOR & BROADGAUGE

**119 | Bar JZ Vivian 589L** {MDF,DBF}  
 Polled Hereford Cow      5/22/2023      P44475190

RV Valor 9444G ET      JDH Victor 719T 33Z ET  
    RV Bobbi 1404  
 Bar JZ Sleepover 894E      Bar JZ Sleep On 738C  
    Bar JZ Arielle 446Y

CED	BW	WW	YW	SC	MM	MCE	MCW	UDR	TEAT	CW	REA	MB	BMI	CHB
-3.1	4.0	72	108	1.1	23	-2.5	96	1.50	1.60	91	.53	.14	401	140

589L. Safe to TH 523F 738C Sleep On 163H on 4/8/2025.



**120 | Bar JZ Gabby 386L**  
 Polled Hereford Cow      3/12/2023      P44475637

Bar JZ Broadgauge 184H      Churchill Broadway 858F  
    Bar JZ Wendy 343Y  
 Bar JZ Blessing 968J      Bar JZ Buccaneer 210E  
    Bar JZ Poppy 061F

CED	BW	WW	YW	SC	MM	MCE	MCW	UDR	TEAT	CW	REA	MB	BMI	CHB
9.6	0.1	54	81	1.4	27	5.2	77	1.30	1.30	73	.43	.22	466	133

386L. Safe to Bar JZ On Demand on 4/8/2025.



**121 | Bar JZ Gabby 387L**  
 Polled Hereford Cow      3/12/2023      P44475622

Bar JZ Broadgauge 184H      Churchill Broadway 858F  
    Bar JZ Wendy 343Y  
 Bar JZ Rose Red 942J      ILR Red Power 456B  
    Bar JZ Tulip 280G

CED	BW	WW	YW	SC	MM	MCE	MCW	UDR	TEAT	CW	REA	MB	BMI	CHB
5.2	0.7	59	92	1.5	31	4.6	78	1.40	1.30	71	.46	.19	430	128

387L. Safe to Bar JZ On Demand on 4/10/2025.



**122 | Bar JZ Gabby 398L**  
 Polled Hereford Cow      3/15/2023      P44475625

Bar JZ Broadgauge 184H      Churchill Broadway 858F  
    Bar JZ Wendy 343Y  
 Bar JZ Vivian 947J      RV Valor 9444G ET  
    Bar JZ Zoey 649D

CED	BW	WW	YW	SC	MM	MCE	MCW	UDR	TEAT	CW	REA	MB	BMI	CHB
10.8	0.1	54	83	1.2	22	3.1	93	1.40	1.40	75	.36	.25	442	138

398L. Safe to SHF Horizon H022 on 4/8/2025.





# BRED HEIFERS SIRED BY - BAR JZ BROADGAUGE 184H

## Bar JZ Broadgauge 184H - Ref. & Service Sire {DLF,HYF,IEF,MSUDF,DBF}

Homozygous Polled 3/21/2020 P44138905

Sire: Churchill Broadway 858F

Dam: Bar JZ Wendy 343Y

Lots: Bulls 59, 60. Bred heifers 120-132, 148-149.

Broadgauge's dam and Buccaneer's dam tie for oldest cow in the herd at 14 years. His grandam was here for 15 years. The family has excellent feet and legs. Check out these sons for calving ease and lighter mature cow weights. Semen available \$25.

CED	BW	WW	YW	SC	MM	MCE	MCW	UDR	TEAT	CW	REA	MB	BMI	CHB
11.2	-1.5	46	71	1.3	21	4.2	82	1.40	1.30	81	.37	.54	523	178



## 123 Bar JZ Gabby 408L {MDF,DBF}

Polled Hereford Cow 3/16/2023 P44475639

Bar JZ Broadgauge 184H

Churchill Broadway 858F

Bar JZ Wendy 343Y

TH Masterplan 183F

Bar JZ Maisey 976J

Bar JZ Topaz 020E

CED	BW	WW	YW	SC	MM	MCE	MCW	UDR	TEAT	CW	REA	MB	BMI	CHB
9.9	-0.9	49	78	1.4	22	2.9	94	1.40	1.30	64	.26	.34	444	134

408L. Safe to Bar JZ On Demand on 4/8/2025.



## 124 Bar JZ Gabby 412L

Polled Hereford Cow 3/18/2023 P44475647

Bar JZ Broadgauge 184H

Churchill Broadway 858F

Bar JZ Wendy 343Y

Bar JZ Bridger 622G

Bar JZ Brienne 994J

Bar JZ Firestorm 989A

CED	BW	WW	YW	SC	MM	MCE	MCW	UDR	TEAT	CW	REA	MB	BMI	CHB
10.6	-1.4	46	66	0.9	22	5.2	89	1.40	1.30	65	.27	.27	446	129

412L. Safe to Bar JZ On Demand on 4/7/2025.



## 125 Bar JZ Gabby 443L

Polled Hereford Cow 3/30/2023 P44475607

Bar JZ Broadgauge 184H

Churchill Broadway 858F

Bar JZ Wendy 343Y

Frenzen Bar JZ Bruiser B30

Bar JZ Brynn 935J

Bar JZ Glory 760D

CED	BW	WW	YW	SC	MM	MCE	MCW	UDR	TEAT	CW	REA	MB	BMI	CHB
4.5	2.0	64	98	1.2	27	5.8	99	1.40	1.30	71	.34	.23	396	126

443L. Safe to Bar JZ On Demand on 4/7/2025.





# BRED HEIFERS SIRED BY - BAR JZ BROADGAUGE 184H

## 126 Bar JZ Gabby 449L

Polled Hereford Cow 3/31/2023 P44475641

Bar JZ Broadgauge 184H Churchill Broadway 858F  
Bar JZ Wendy 343Y  
Bar JZ Imagination 979J Innisfail WHR X651/723 4013 ET  
Bar JZ Heartstrings 901E

CED	BW	WW	YW	SC	MM	MCE	MCW	UDR	TEAT	CW	REA	MB	BMI	CHB
8.0	0.5	53	84	1.3	22	2.9	97	1.40	1.30	65	.20	.35	441	134

449L. Safe to Bar JZ On Demand on 4/8/2025.



## 127 Bar JZ Gabby 458L

Polled Hereford Cow 4/10/2023 P44469784

Bar JZ Broadgauge 184H Churchill Broadway 858F  
Bar JZ Wendy 343Y  
Bar JZ Kindness 027J Bar JZ Kickback 227E ET  
Bar JZ Sleepover 894E

CED	BW	WW	YW	SC	MM	MCE	MCW	UDR	TEAT	CW	REA	MB	BMI	CHB
0.8	2.7	51	86	1.1	23	0.1	86	1.50	1.40	60	.16	.14	435	113

458L. Safe to Bar JZ On Demand on 4/8/2025.



## 128 Bar JZ Gabby 521L

Polled Hereford Cow 5/16/2023 P44474630

Bar JZ Broadgauge 184H Churchill Broadway 858F  
Bar JZ Wendy 343Y  
Bar JZ Brynn 693H Frenzen Bar JZ Bruiser B30  
Bar JZ Georgia 486C

CED	BW	WW	YW	SC	MM	MCE	MCW	UDR	TEAT	CW	REA	MB	BMI	CHB
2.5	1.3	60	90	1.2	25	3.1	109	1.30	1.30	72	.34	.19	438	121

521L. Safe to Bar JZ On Demand on 4/8/2025.



## 129 Bar JZ Gabby 609L

Polled Hereford Cow 5/27/2023 P44475602

Bar JZ Broadgauge 184H Churchill Broadway 858F  
Bar JZ Wendy 343Y  
Bar JZ Heartstrings 925E Bar JZ Hearthstone 426B ET  
Bar JZ Isabella 272X

CED	BW	WW	YW	SC	MM	MCE	MCW	UDR	TEAT	CW	REA	MB	BMI	CHB
4.3	1.8	59	94	1.0	24	1.0	114	1.30	1.20	71	.43	.16	408	125

609L. Safe to Bar JZ On Demand on 4/8/2025.





# BRED HEIFERS SIRED BY - BROADGAUGE & VANQUISH

## 130 Bar JZ Gabby 381L

Polled Hereford Cow 3/10/2023 P44475613

Bar JZ Broadgauge 184H Churchill Broadway 858F  
Bar JZ Wendy 343Y  
Bar JZ Blessing 941J Bar JZ Buccaneer 210E  
Bar JZ Rhapsody 996W

CED	BW	WW	YW	SC	MM	MCE	MCW	UDR	TEAT	CW	REA	MB	BMI	CHB
5.2	2.2	60	91	1.4	29	2.6	78	1.40	1.30	74	.45	.18	492	132

381L. Safe to Bar JZ Valiant 756L on 5/7/2025.



## 131 Bar JZ Gabby 472L

Polled Hereford Cow 4/30/2023 P44475140

Bar JZ Broadgauge 184H Churchill Broadway 858F  
Bar JZ Wendy 343Y  
Bar JZ Blessing 853J Bar JZ Buccaneer 210E  
Bar JZ Shyanna 773E

CED	BW	WW	YW	SC	MM	MCE	MCW	UDR	TEAT	CW	REA	MB	BMI	CHB
11.2	-1.5	52	74	1.4	28	4.9	67	1.40	1.40	72	.37	.23	451	132

472L. Safe to Bar JZ Valiant 756L on 5/3/2025.



## 132 Bar JZ Vanessa 378L

Polled Hereford Cow 3/10/2023 P44475083

Bar JZ Vanquish 329J RV Valor 9444G ET  
Bar JZ Heartstrings 325G  
Bar JZ Blessing 824J Bar JZ Buccaneer 210E  
Bar JZ Sleepover 305G

CED	BW	WW	YW	SC	MM	MCE	MCW	UDR	TEAT	CW	REA	MB	BMI	CHB
14.9	-3.2	55	84	1.2	24	3.1	84	1.50	1.50	76	.45	.13	347	123

378L. Safe to Churchill Kingdom 128J ET on 4/7/2025.



## 133 Bar JZ Vanessa 383L

Polled Hereford Cow 3/11/2023 P44475604

Bar JZ Vanquish 329J RV Valor 9444G ET  
Bar JZ Heartstrings 325G  
Bar JZ Blessing 929J Bar JZ Buccaneer 210E  
Bar JZ Sleepover 173F

CED	BW	WW	YW	SC	MM	MCE	MCW	UDR	TEAT	CW	REA	MB	BMI	CHB
4.1	2.1	67	108	1.3	25	1.8	82	1.50	1.40	81	.55	.06	348	123

383L. Safe to SHF Horizon D287 H022 ET on 4/8/2025.





# BRED HEIFERS SIRED BY - BAR JZ VANQUISH 329J

## 134 | Bar JZ Vanessa 567L

Polled Hereford Cow      5/18/2023      P44471658

**Bar JZ Vanquish 329J**      RV Valor 9444G ET  
    Bar JZ Heartstrings 325G  
**Bar JZ Crimson 050F**      Churchill Kickstart 501C ET  
    Bar JZ Glimmer 384C

CED	BW	WW	YW	SC	MM	MCE	MCW	UDR	TEAT	CW	REA	MB	BMI	CHB
10.6	-0.2	56	94	0.9	16	4.2	93	1.30	1.20	70	.39	.01	334	106

567L. Safe to Churchill Kingdom 128J ET on 4/8/2025.



## 135 | Bar JZ Vanessa 599L

Polled Hereford Cow      5/24/2023      P44471674

**Bar JZ Vanquish 329J**      RV Valor 9444G ET  
    Bar JZ Heartstrings 325G  
**Bar JZ Serendipity 152F**      Bar JZ Surgical Strike 014D ET  
    Bar JZ Carlie 350S

CED	BW	WW	YW	SC	MM	MCE	MCW	UDR	TEAT	CW	REA	MB	BMI	CHB
2.2	2.9	64	109	1.1	22	2.8	115	1.30	1.30	74	.43	.12	313	119

599L. Safe to Churchill Kingdom 128J ET on 4/7/2025.



## 136 | Bar JZ Vanessa 491L

Polled Hereford Cow      5/11/2023      P44474483

**Bar JZ Vanquish 329J**      RV Valor 9444G ET  
    Bar JZ Heartstrings 325G  
**Bar JZ Tequila Rose 563H**      NJW 33TB 100W Trust 167Y  
    Bar JZ Crimson 120F

CED	BW	WW	YW	SC	MM	MCE	MCW	UDR	TEAT	CW	REA	MB	BMI	CHB
15.5	-2.5	49	83	1.0	18	0.7	91	1.40	1.40	75	.47	.22	350	132

491L. Safe to Bar JZ Broadgauge 184H on 4/30/2025.



## 137 | Bar JZ Vanessa 571L

Polled Hereford Cow      5/19/2023      P44475643

**Bar JZ Vanquish 329J**      RV Valor 9444G ET  
    Bar JZ Heartstrings 325G  
**Bar JZ Topaz 983E**      Bar JZ Trust Fund 245A ET  
    Bar JZ Ruthie 331Y

CED	BW	WW	YW	SC	MM	MCE	MCW	UDR	TEAT	CW	REA	MB	BMI	CHB
10.7	-0.2	55	93	1.0	15	3.2	87	1.30	1.30	73	.44	.07	323	115

571L. Safe to Bar JZ Broadgauge 184H on 5/5/2025.





# BRED HEIFERS

## Bar JZ Buccaneer 210E - Reference Sire {DLF,HYF,IEF,MSUDF,MDF}

Homozygous Polled 3/11/2017 P43797256  
Sire: Frenzen Bar JZ Bruiser B30  
Dam: Bar JZ Fern 531Y

**Lots:** Bull 58. Bred heifer 138. Open heifer 183.

**Buccaneer** has proven himself as a top 1% of the breed calving ease sire. His dam ties for oldest cow in our herd at 14 years of age. She has perfect feet and legs. His daughters hold his udder and teat EPDs in the top 1% of the breed, and they produced many yearling bulls in this sale. Semen available through Semex.

CED	BW	WW	YW	SC	MM	MCE	MCW	UDR	TEAT	CW	REA	MB	BMI	CHB
14.5	-1.5	58	79	1.8	37	11.9	52	1.50	1.60	77	.69	.07	484	120



## 138 Bar JZ Blessing 478L

Polled Hereford Cow 5/7/2023 P44474520

**Bar JZ Buccaneer 210E** Frenzen Bar JZ Bruiser B30  
Bar JZ Fern 531Y  
**Bar JZ Rose Red 607H** ILR Red Power 456B  
Bar JZ Rebecca 954W

CED	BW	WW	YW	SC	MM	MCE	MCW	UDR	TEAT	CW	REA	MB	BMI	CHB
12.5	-1.2	52	75	1.7	35	5.0	47	1.40	1.40	66	.52	.05	483	105

478L. Safe to Bar JZ On Demand on 4/7/2025.



## 139 Bar JZ Insync 640L {MDF,DBF}

Polled Hereford Cow 5/24/2023 P44486478

**Bar JZ Insight 334J** Innisfail WHR X651/723 4013 ET  
Bar JZ Topaz 547C  
**Bar JZ Brynn 698H** Frenzen Bar JZ Bruiser B30  
Bar JZ Wendy 342Y

CED	BW	WW	YW	SC	MM	MCE	MCW	UDR	TEAT	CW	REA	MB	BMI	CHB
4.0	1.4	69	105	1.7	29	6.5	86	1.30	1.30	72	.48	.18	390	122

640L. Safe to TH 523F 738C Sleep On 163H on 4/8/2025.



## 140 Bar JZ Mariah 487L

Polled Hereford Cow 5/10/2023 P44474558

**Churchill Majestic 903G ET** Boy 31Z Blueprint 6153  
H MS 0103 Mariah 4437 ET  
**Bar JZ Brynn 645H** Frenzen Bar JZ Bruiser B30  
Bar JZ Topaz 900E

CED	BW	WW	YW	SC	MM	MCE	MCW	UDR	TEAT	CW	REA	MB	BMI	CHB
2.0	3.3	70	99	1.2	33	1.3	89	1.60	1.60	82	.74	.02	482	121

487L. Safe to SHF Horizon D287 H022 ET on 4/8/2025.





# BRED HEIFERS

## 141 Bar JZ Imagination 550L

Polled Hereford Cow 5/17/2023 P44471680

Innisfail WHR X651/723 4013 ET EFbeef TFL U208 Tested X651 et  
 Innifail P230 T723  
 Bar JZ Crimson 192F Churchill Kickstart 501C ET  
 Bar JZ Hope 243B

CED	BW	WW	YW	SC	MM	MCE	MCW	UDR	TEAT	CW	REA	MB	BMI	CHB
8.0	1.8	73	117	1.4	25	4.4	114	1.20	1.10	75	.47	.23	430	131

550L. Safe to Bar JZ On Demand on 4/7/2025.



## 142 Bar JZ Inspiration 600L

Polled Hereford Cow 5/26/2023 P44475093

Innisfail WHR X651/723 4020 ET EFbeef TFL U208 Tested X651 et  
 Innifail P230 T723  
 Bar JZ Brynn 832E Frenzen Bar JZ Bruiser B30  
 Bar JZ Primrose 750U

CED	BW	WW	YW	SC	MM	MCE	MCW	UDR	TEAT	CW	REA	MB	BMI	CHB
-1.6	4.6	74	115	1.0	29	-1.0	91	1.40	1.30	67	.37	.26	485	123

600L. Safe to Bar JZ On Demand on 4/8/2025.



## 143 Bar JZ Brightside 396L

Polled Hereford Cow 3/15/2023 P44475609

Bar JZ Broadside 125H Churchill Broadway 858F  
 Bar JZ Eloquent 034F  
 Bar JZ Vivian 937J RV Valor 9444G ET  
 Bar JZ Hope 833A ET

CED	BW	WW	YW	SC	MM	MCE	MCW	UDR	TEAT	CW	REA	MB	BMI	CHB
13.5	-1.3	58	89	0.9	22	7.4	85	1.40	1.50	77	.36	.30	457	139

396L. Safe to SHF Horizon D287 H022 ET on 4/7/2025.



## 144 Bar JZ Brightside 592L

Polled Hereford Cow 5/22/2023 P44469751

Bar JZ Broadside 125H Churchill Broadway 858F  
 Bar JZ Eloquent 034F  
 Bar JZ Topaz 007E Bar JZ Trust Fund 245A ET  
 Bar JZ Kylie Jo 843U

CED	BW	WW	YW	SC	MM	MCE	MCW	UDR	TEAT	CW	REA	MB	BMI	CHB
1.1	4.3	64	102	1.1	26	3.4	101	1.30	1.20	75	.35	.03	391	115

592L. Safe to Bar JZ On Demand on 4/10/2025.





# BRED HEIFERS

## 145 Bar JZ Lexy 368L

Polled Hereford Cow 3/07/2023 P44473166

NJW 139C 103C Ridge 254G NJW 73S 38W Ridge 103C ET  
 NJW 149Z 88X Lexy 139C ET  
 Bar JZ Rose Red 802J ILR Red Power 456B  
 Bar JZ Stacey 452G

CED	BW	WW	YW	SC	MM	MCE	MCW	UDR	TEAT	CW	REA	MB	BMI	CHB
9.1	-0.1	57	79	1.4	37	2.3	55	1.50	1.60	69	.38	.11	473	107

368L. Safe to Bar JZ Broadgauge 184H on 5/10/2025.



## 146 Bar JZ Lexy 392L {MDF,DBC}

Polled Hereford Cow 3/14/2023 P44475599

NJW 139C 103C Ridge 254G NJW 73S 38W Ridge 103C ET  
 NJW 149Z 88X Lexy 139C ET  
 Bar JZ Vivian 921J RV Valor 9444G ET  
 Bar JZ Devotion 816A ET

CED	BW	WW	YW	SC	MM	MCE	MCW	UDR	TEAT	CW	REA	MB	BMI	CHB
9.2	0.5	66	90	1.2	31	2.3	71	1.70	1.70	80	.46	.18	470	122

392L. Safe to Bar JZ Broadgauge 184H on 5/03/2025.



### Lots 147-153. Commercial Bred Polled Hereford Heifers

Safe to S S Brickyard E81 (Angus) on April 8, 2025.  
 Brickyard has impressive EPDS.

- CED** Top 10% of the Angus breed.
- BW** Top 4% of the Angus breed.
- WW** Top 50% of the Angus breed.
- YW** Top 35% of the Angus breed.
- CEM** Top 10% of the Angus breed.
- Milk** Top 2% of the Angus breed.



Sandy, our newest ranchhand.



# BAR JZ ON DEMAND



## Bar JZ On Demand(619K) - Ref. & Service Sire

{DLF,HYF,IEF,MSUDF,MDF,DBF}

Sire: RV Valor 9444G ET

Dam: Bar JZ Hannah 087B

Homozygous Polled

3/26/2022

P44355795

CED	BW	WW	YW	SC	MM	MCE	MCW	UDR	TEAT	CW	REA	MB	BMI	CHB
14.1	0.9	79	121	1.6	26	3.9	98	1.50	1.50	99	.62	.24	426	152

Lots: Open heifers 160-167.

Seldom do we find a bull that can stamp a look like **On Demand** and bring his low birth and high growth numbers. Our 52 calves averaged 78 lbs at birth and weaned at a 103 ratio. We used him even more this breeding season. You can see his work in top herds around the country, including owners, Hoffman Ranch. Hoffman Ranch now owns his top-producing dam as well.



**Bar JZ Hannah 087B.** Dam of On Demand and a top lifetime producer. Her lineage includes several of our best. She is now owned by Hoffman Ranch. Lifetime ratios of BW 96, WW 104, YW 106.



# OPEN HEIFERS SIRED BY - BAR JZ ON DEMAND

**160 Bar JZ Destiny 830M** {DLF,HYF,IEF,MSUDF}  
 Polled Hereford Cow 5/23/2024 P44590254

Homo Polled

Bar JZ On Demand

RV Valor 9444G ET  
 Bar JZ Hannah 087B  
 Innisfail WHR X651/723 4013 ET  
 Bar JZ Hannah 579D ET



Bar JZ Imagination 658H

CED	BW	WW	YW	SC	MM	MCE	MCW	UDR	TEAT	CW	REA	MB	BMI	CHB
7.7	3.3	82	120	1.8	34	5.8	98	1.30	1.40	101	.86	.48	510	181

Homozygous Polled.



**161 Bar JZ Destiny 712M** {DLF,HYF,IEF,MSUDF}  
 Polled Hereford Cow 5/04/2024 P44590157

Homo Polled

Bar JZ On Demand

RV Valor 9444G ET  
 Bar JZ Hannah 087B  
 Bar JZ Fabulous 207H  
 Bar JZ Blessing 696H



Bar JZ Forever 342K

CED	BW	WW	YW	SC	MM	MCE	MCW	UDR	TEAT	CW	REA	MB	BMI	CHB
9.4	1.5	66	104	1.3	19	4.0	88	1.50	1.60	86	.67	.24	344	138

Homozygous Polled.



**162 Bar JZ Destiny 715M** {DLF,HYF,IEF,MSUDF}  
 Polled Hereford Cow 5/05/2024 P44590139

Homo Polled

Bar JZ On Demand

RV Valor 9444G ET  
 Bar JZ Hannah 087B  
 Bar JZ Bridger 622G  
 Bar JZ Sleepover 173F



Bar JZ Brianna 303K

CED	BW	WW	YW	SC	MM	MCE	MCW	UDR	TEAT	CW	REA	MB	BMI	CHB
5.6	3.1	79	117	1.5	34	5.7	91	1.30	1.40	106	.90	.24	376	163

Homozygous Polled.



**163 Bar JZ Destiny 733M** {DLF,HYF,IEF,MSUDF}  
 Polled Hereford Cow 5/09/2024 P44590244

Het Polled

Bar JZ On Demand

RV Valor 9444G ET  
 Bar JZ Hannah 087B  
 Innisfail WHR X651/723 4013 ET  
 Bar JZ Primrose 750U



Bar JZ Imagination 631H

CED	BW	WW	YW	SC	MM	MCE	MCW	UDR	TEAT	CW	REA	MB	BMI	CHB
12.1	0.8	66	100	1.2	21	3.1	107	1.30	1.20	77	.41	.24	380	125

Heterozygous Polled.





# OPEN HEIFERS SIRED BY - BAR JZ ON DEMAND

**164 Bar JZ Destiny 751M** {DLF,HYF,IEF,MSUDF}  
 Polled Hereford Cow 5/13/2024 P44590189

Homo Polled

Bar JZ On Demand

RV Valor 9444G ET  
 Bar JZ Hannah 087B  
 Frenzen Bar JZ Bruiser B30  
 Bar JZ Eloquent 043F



Bar JZ Brynn 524H

CED	BW	WW	YW	SC	MM	MCE	MCW	UDR	TEAT	CW	REA	MB	BMI	CHB
2.5	3.5	82	119	1.4	33	0.2	102	1.40	1.50	85	.49	.14	425	124

Homozygous Polled.



**165 Bar JZ Destiny 770M** {DLF,HYF,IEF,MSUDF}  
 Polled Hereford Cow 5/16/2024 P44590138

Homo Polled

Bar JZ On Demand

RV Valor 9444G ET  
 Bar JZ Hannah 087B  
 Bar JZ Dutchman 310E  
 Bar JZ Glory 249B



Bar JZ Tulip 302G

CED	BW	WW	YW	SC	MM	MCE	MCW	UDR	TEAT	CW	REA	MB	BMI	CHB
1.7	1.8	72	104	1.1	30	-3.3	94	1.40	1.40	95	.70	-.03	430	122

Homozygous Polled.



**166 Bar JZ Destiny 819M** {DLF,HYF,IEF,MSUDF}  
 Polled Hereford Cow 5/21/2024 P44590458

Homo Polled

Bar JZ On Demand

RV Valor 9444G ET  
 Bar JZ Hannah 087B  
 Frenzen Bar JZ Bruiser B30  
 Bar JZ Faith 006A



Bar JZ Brynn 969E

CED	BW	WW	YW	SC	MM	MCE	MCW	UDR	TEAT	CW	REA	MB	BMI	CHB
-1.8	4.5	78	119	1.3	36	-1.5	120	1.50	1.50	82	.50	.15	426	126

Homozygous Polled.



**167 Bar JZ Destiny 865M** {DLF,HYF,IEF,MSUDF}  
 Polled Hereford Cow 5/27/2024 P44590313

Het Polled

Bar JZ On Demand

RV Valor 9444G ET  
 Bar JZ Hannah 087B  
 NJW 33TB 100W Trust 167Y  
 Bar JZ Brynn 832E



Bar JZ Tequila Rose 705H

CED	BW	WW	YW	SC	MM	MCE	MCW	UDR	TEAT	CW	REA	MB	BMI	CHB
6.6	3.4	76	117	1.4	28	2.8	107	1.40	1.30	100	.84	.21	442	156

Heterozygous Polled.





# OPEN HEIFERS SIRED BY - SHF HORIZON D287 H022 ET

**168** Bar JZ Honour 735M {DLF,HYF,IEF,MSUDF}  
 Polled Hereford Cow 5/10/2024 P44590438

**Homo Polled**  
 SHF Horizon D287 H022 ET SHF Daybreak Y02 D287 ET  
 SHF Time 001A D81  
 Bar JZ Blessing 941J Bar JZ Buccaneer 210E  
 Bar JZ Rhapsody 996W

CED	BW	WW	YW	SC	MM	MCE	MCW	UDR	TEAT	CW	REA	MB	BMI	CHB
11.5	-0.2	62	98	1.3	25	4.8	108	1.60	1.60	84	.57	.22	482	145

Homozygous Polled.



**169** Bar JZ Honour 750M {DLF,HYF,IEF,MSUDF}  
 Polled Hereford Cow 5/13/2024 P44585756

**Homo Polled**  
 SHF Horizon D287 H022 ET SHF Daybreak Y02 D287 ET  
 SHF Time 001A D81  
 Bar JZ Crimson 115F Churchill Kickstart 501C ET  
 Bar JZ Lottie 353C ET

CED	BW	WW	YW	SC	MM	MCE	MCW	UDR	TEAT	CW	REA	MB	BMI	CHB
14.3	-1.5	59	96	1.3	31	5.4	100	1.60	1.60	84	.51	.18	516	140

Homozygous Polled.



**170** Bar JZ Honour 755M {DLF,HYF,IEF,MSUDF}  
 Polled Hereford Cow 5/14/2024 P44590430

**Homo Polled**  
 SHF Horizon D287 H022 ET SHF Daybreak Y02 D287 ET  
 SHF Time 001A D81  
 Bar JZ Heartstrings 925E Bar JZ Hearthstone 426B ET  
 Bar JZ Isabella 272X

CED	BW	WW	YW	SC	MM	MCE	MCW	UDR	TEAT	CW	REA	MB	BMI	CHB
10.6	0.4	73	113	1.3	26	6.0	144	1.30	1.30	85	.66	.23	318	141

Homozygous Polled.



**171** Bar JZ Honour 844M {DLF,HYF,IEF,MSUDF}  
 Polled Hereford Cow 5/24/2024 P44590176

**Homo Polled**  
 SHF Horizon D287 H022 ET SHF Daybreak Y02 D287 ET  
 SHF Time 001A D81  
 Bar JZ Tulip 418G Bar JZ Dutchman 310E  
 Bar JZ Sleepover 791E

CED	BW	WW	YW	SC	MM	MCE	MCW	UDR	TEAT	CW	REA	MB	BMI	CHB
5.6	0.6	73	117	1.3	36	3.4	131	1.30	1.40	87	.68	.16	339	143

Homozygous Polled.





# OPEN HEIFERS SIRED BY - HORIZON & INSIGHT J354

**172 Bar JZ Honour 855M** {DLF,HYF,IEF,MSUDF}  
 Polled Hereford Cow 5/26/2024 P44585415

**Homo Polled**  
 SHF Horizon D287 H022 ET SHF Daybreak Y02 D287 ET  
 SHF Time 001A D81  
**AHA GE-EPD** Bar JZ Eloquent 032F Mohican THM Excede Z426  
 Bar JZ Valerie 719D

CED	BW	WW	YW	SC	MM	MCE	MCW	UDR	TEAT	CW	REA	MB	BMI	CHB
8.7	1.0	62	99	0.8	29	-0.7	88	1.60	1.70	67	.18	.25	406	121

Homozygous Polled.



**173 Bar JZ Honour 904M** {DLF,HYF,IEF,MSUDF}  
 Polled Hereford Cow 5/15/2024 P44590253

**Homo Polled**  
 SHF Horizon D287 H022 ET SHF Daybreak Y02 D287 ET  
 SHF Time 001A D81  
**AHA GE-EPD** Bar JZ Blessing 656H Bar JZ Buccaneer 210E  
 Bar JZ Sleepover 787E

CED	BW	WW	YW	SC	MM	MCE	MCW	UDR	TEAT	CW	REA	MB	BMI	CHB
14.5	-1.9	67	95	1.6	31	6.7	86	1.50	1.60	77	.28	.24	451	125

Homozygous Polled.



**174 Bar JZ Izzie 708M** {DLF,HYF,IEF,MSUDF}  
 Polled Hereford Cow 5/01/2024 P44590358

**Het Polled**  
 SHF Insight F158 J354 ET SHF Foresight B413 F158  
 SHF Oksana 001A D03 ET  
**AHA GE-EPD** Bar JZ Hope 833A ET NJW 73S M326 Trust 100W ET  
 Bar JZ 346C Lady 701H

CED	BW	WW	YW	SC	MM	MCE	MCW	UDR	TEAT	CW	REA	MB	BMI	CHB
5.9	1.0	56	85	1.3	23	1.5	83	1.40	1.60	64	.60	.31	484	123

Heterozygous Polled.



**175 Bar JZ Izzie 736M** {DLF,HYF,IEF,MSUDF}  
 Polled Hereford Cow 5/10/2024 P44590369

**Homo Polled**  
 SHF Insight F158 J354 ET SHF Foresight B413 F158  
 SHF Oksana 001A D03 ET  
**AHA GE-EPD** Bar JZ Blessing 860J Bar JZ Buccaneer 210E  
 Bar JZ Shyanna 297G

CED	BW	WW	YW	SC	MM	MCE	MCW	UDR	TEAT	CW	REA	MB	BMI	CHB
12.6	0.4	58	82	1.4	36	3.0	66	1.50	1.60	70	.46	.27	499	121

Homozygous Polled.





# OPEN HEIFERS Sired BY - SHF Insight F158 J354 ET

## SHF Insight F158 J354 ET - Reference Sire {DLF,HYF,IEF,MSUDF,MDF,DBF}

Homozygous Polled 2/24/2021 P44228488  
Sire: SHF Foresight B413 F158  
Dam: SHF Oksana 001A D03 ET

**Insight J354.** We used J354 for his added power, pigment, carcass and udder quality.

CED	BW	WW	YW	SC	MM	MCE	MCW	UDR	TEAT	CW	REA	MB	BMI	CHB
2.8	4.1	70	108	2.0	25	-0.9	107	1.50	1.60	85	.90	.42	441	167



## 176 Bar JZ Izzie 752M {DLF,HYF,IEF,MSUDF}

Polled Hereford Cow 5/13/2024 P44590158



SHF Insight F158 J354 ET SHF Foresight B413 F158  
SHF Oksana 001A D03 ET  
Bar JZ Wendy 343Y Boyd Worldwide 9050 ET  
Bar JZ 346C Lady 701H



CED	BW	WW	YW	SC	MM	MCE	MCW	UDR	TEAT	CW	REA	MB	BMI	CHB
8.7	2.6	63	94	1.2	32	0.6	75	1.30	1.40	71	.56	.18	518	123

Homozygous Polled.



## 177 Bar JZ Izzie 778M {DLF,HYF,IEF,MSUDF}

Polled Hereford Cow 5/16/2024 P44585796



SHF Insight F158 J354 ET SHF Foresight B413 F158  
SHF Oksana 001A D03 ET  
Bar JZ Tequila Rose 126F NJW 33TB 100W Trust 167Y  
Bar JZ Rebecca 954W



CED	BW	WW	YW	SC	MM	MCE	MCW	UDR	TEAT	CW	REA	MB	BMI	CHB
0.2	5.6	61	101	1.2	29	-1.9	94	1.30	1.40	77	.76	.31	454	154

Homozygous Polled.



## 178 Bar JZ Izzie 812M {DLF,HYF,IEF,MSUDF}

Polled Hereford Cow 5/20/2024 P44589992



SHF Insight F158 J354 ET SHF Foresight B413 F158  
SHF Oksana 001A D03 ET  
Bar JZ Shyanna 297G TH 49U 719T Shyenenne 3X  
Bar JZ Corabelle 014E



CED	BW	WW	YW	SC	MM	MCE	MCW	UDR	TEAT	CW	REA	MB	BMI	CHB
-3.3	6.2	83	124	1.8	31	-4.3	121	1.30	1.30	92	.90	.25	394	157

Homozygous Polled.





# OPEN HEIFERS SIRED BY - CMF 1720 Gold Rush 569G

## CMF 1720 Gold Rush 569G ET - Reference Sire {DLF,HYF,IEF,MSUDF,MDF,DBF}

Homozygous Polled 11/27/2019 P44108010  
Sire: NJW 79Z Z311 Endure 173D ET  
Dam: L III TFL C609 Victoria 1720

- Gold Rush had a huge spring with sons topping sales along with a dominating performance in the Hereford NRSP at Olsen Ranch.
- Siring sound-structured, attractive offspring, GOLD RUSH drives data in virtually any mating.

CED	BW	WW	YW	SC	MM	MCE	MCW	UDR	TEAT	CW	REA	MB	BMI	CHB
11.8	1.1	69	108	1.1	30	4.6	89	1.30	1.30	103	.87	.74	603	219



## 179 Bar JZ Ginny 716M {DLF,HYF,IEF,MSUDF}

Polled Hereford Cow 5/05/2024 P44590248



CMF 1720 Gold Rush 569G ET  
Bar JZ Brynn 645H

NJW 79Z Z311 Endure 173D ET  
L III TFL C609 Victoria 1720  
Frenzen Bar JZ Bruiser B30  
Bar JZ Topaz 900E



CED	BW	WW	YW	SC	MM	MCE	MCW	UDR	TEAT	CW	REA	MB	BMI	CHB
3.8	3.0	67	105	1.4	35	2.3	91	1.30	1.40	91	.77	.38	596	171

Homozygous Polled.



## 180 Bar JZ Ginny 721M {DLF,HYF,IEF,MSUDF}

Polled Hereford Cow 5/07/2024 P44590362



CMF 1720 Gold Rush 569G ET  
Bar JZ Blessing 846J

NJW 79Z Z311 Endure 173D ET  
L III TFL C609 Victoria 1720  
Bar JZ Buccaneer 210E  
Bar JZ Topaz 389G



CED	BW	WW	YW	SC	MM	MCE	MCW	UDR	TEAT	CW	REA	MB	BMI	CHB
6.8	1.0	67	96	1.7	33	1.9	71	1.30	1.30	92	.77	.29	549	158

Homozygous Polled.



## 181 Bar JZ Ginny 730M {DLF,HYF,IEF,MSUDF}

Polled Hereford Cow 5/09/2024 P44585746



CMF 1720 Gold Rush 569G ET  
Bar JZ Crimson 112F

NJW 79Z Z311 Endure 173D ET  
L III TFL C609 Victoria 1720  
Churchhill Kickstart 501C ET  
Bar JZ Tappen 252B



CED	BW	WW	YW	SC	MM	MCE	MCW	UDR	TEAT	CW	REA	MB	BMI	CHB
11.2	-0.9	55	84	1.2	28	3.2	78	1.40	1.50	84	.56	.45	505	169

Homozygous Polled.





# OPEN HEIFERS

## 182 Bar JZ Insync 710M {MDF,DBF}

Polled Hereford Cow 5/01/2024 P44590001

Polled

Bar JZ Insight 334J

Innisfail WHR X651/723 4103 ET  
Bar JZ Topaz 547C  
Bar JZ Sleep Tight 412F  
Bar JZ Sleepover 791E

CED	BW	WW	YW	SC	MM	MCE	MCW	UDR	TEAT	CW	REA	MB	BMI	CHB
3.5	0.7	63	103	2.1	34	0.3	88	1.40	1.40	78	.50	.24	403	140

Polled.



## 183 Bar JZ Blessing 805M {DLF,HYF,IEF,MSUDF}

Polled Hereford Cow 5/19/2024 P44590316

Homo Polled

Bar JZ Buccaneer 210E

Frenzen Bar JZ Bruiser B30  
Bar JZ Fern 531Y  
Frenzen Freebird F53  
Bar JZ Serendipity 152F

CED	BW	WW	YW	SC	MM	MCE	MCW	UDR	TEAT	CW	REA	MB	BMI	CHB
7.6	3.5	71	109	1.9	38	6.2	96	1.50	1.60	78	.62	.07	397	120

Homozygous Polled.



## 184 Bar JZ Holiday 833M {DLF,HYF,IEF,MSUDF}

Polled Hereford Cow 5/23/2024 P44589974

Homo Polled

SHF Houston D287 H086

SHF Daybreak Y02 D287 ET  
SHF Miss 14 20Z D223  
Bar JZ Dutchman 310E  
Bar JZ Brynn 009E

CED	BW	WW	YW	SC	MM	MCE	MCW	UDR	TEAT	CW	REA	MB	BMI	CHB
-1.9	3.2	87	132	1.6	43	2.7	111	1.50	1.50	102	.98	.02	462	152

Homozygous Polled.



Left: Cody, Lydia, Caroline, Wesley still live, go to school & work in Pierre.  
Center: Bridget & Avila took over the silage chopping tractor when Peg went to Spain to visit Kevin. Right: Solanus & Avila helped Seth in the tractor when Bridget, Don & Peg were all gone.





# SHF LOCKER 569G L341 ET



## SHF Locker 569G L341 ET - New Sire

{DLF,HYF,IEF,MSUDF,MDF,DBF}

Sire: CMF 1720 Gold Rush 569G ET

Dam: SHF Maggie D287 G012 ET

Homozygous Polled

2/21/2023

P44443183

CED	BW	WW	YW	SC	MM	MCE	MCW	UDR	TEAT	CW	REA	MB	BMI	CHB
9.4	1.4	62	105	1.2	27	1.6	94	1.30	1.30	92	.85	.58	442	188

Locker was our pick from the 2024 Sandhills sale. He is good-footed and exceptionally docile. Fully pigmented around both eyes and carries a strong hip. We used him extensively AI, then he cleaned up 60+ head, holding his condition well.

Semen available, \$25.



SHF Maggie D287 G012 ET  
dam of Locker



# 2025 ZILVERBERG FAMILY ALBUM



Great Grandma Barb painted pictures for each of her great grandchildren. Solanus & Avila received their keepsake gifts on Christmas Day.



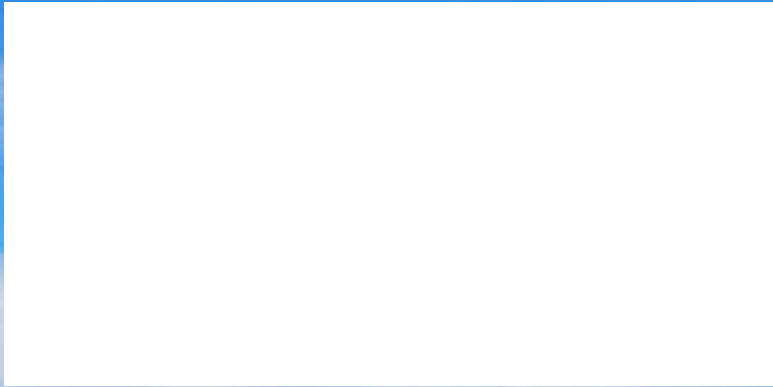




**Bar JZ Ranches**  
*Excellence in Polled Genetics*  
 Don/Peg Zilverberg  
 Seth/Bridget Zilverberg  
 18542 326 Ave.  
 Holabird, SD 57540  
 605/852-2966

Presorted  
 First Class Mail  
 US Postage  
 PAID  
 Aberdeen SD  
 Permit No 200

**Location**  
**Bar JZ South Ranch Sale Barn**



**www.barjz.com**



4. Bar JZ Hondo 868L  
 by SHF Houston



19. Bar JZ Hondo 893L  
 by SHF Houston



29. Bar JZ Valiant 857L  
 by RV Valor



7. Bar JZ Hondo 916L  
 by SHF Houston



110. Bar JZ Vivian 367L by Valor  
 Safe to SHF Horizon on 4/8



111. Bar JZ Vivian 369L by Valor  
 Safe to SHF Horizon on 4/7



130. Bar JZ Gabby 381L by Broadgauge  
 Safe to Bar JZ Valiant 756L on 5/7



160. Bar JZ Destiny 830M  
 by Bar JZ On Demand



162. Bar JZ Destiny 715M  
 by Bar JZ On Demand