

JZ

Bar JZ Ranches

The 75th Annual Sale

Tuesday, February 20, 2024 1:00 p.m.

Bar JZ South Ranch Sale Barn

9 north of Holabird, South Dakota



Bar JZ On Demand. His Service Sells

70 Homozygous Polled Hereford Bulls

•Yrlgs •18-month-olds •2-yr-olds

45 Polled Hereford Spring Bred Heifers



40 Polled Limousin & LimFlex Bulls

•Yearlings •2-year-olds



JZ

Bar JZ Ranches

75th Annual Production Sale

Tuesday, February 20, 2024

1:00 p.m.

Bar JZ
South Ranch
Sale Barn

Sale Staff

Chisum Peterson, auctioneer	605/730-4214
Art Handel, Handel Marketing	605/391-8233
Aaron Friedt, American Hereford Ass'n	701/590-9597
Matt Zens, President SDHA	605/310-5782
Jill Hotchkiss, <i>Hereford America</i>	605/490-1409
Phil Eggers, <i>The Livestock Link</i>	605/351-5438
Marc Hotchkiss, <i>The Livestock Link</i>	605/210-1956
Mark Anderson, North American Limousin	303/884-3900
Dean Summerbell, <i>Limousin Heartbeat</i>	612/963-3799
Matt Bruner, President SDLA	605/480-0217
Kadon Leddy, <i>Cattle Business Weekly</i>	605/924-0757
Kelly Klein, <i>Tri-State Livestock News</i>	701/320-5817
Jeff Kapperman, <i>Tri-State Neighbor</i>	605/940-5104

Free Delivery

Two-year-old and 18-month-old bulls and all heifers will be delivered as soon as possible after the sale. Yearling bulls will be delivered after April 1st. For purchases totaling \$15,000 or more, we will deliver within 300 miles to the buyer's yard. For total purchases under \$15,000, we may ask buyers to meet us at a regional unloading point (e.g. sale barn) on a highway. We assist on deliveries over 300 miles. If you do not want delivery of your bull when we are ready to deliver, we will feed bulls for \$3/head/day, and you can pick them up when you are ready. Our guarantee will apply in case of injury or death of bulls wintered at Bar JZ.

Conditions

The cattle will be sold singly or in pairs or groups to suit the buyers. The auctioneer will settle disputes as to bids by declaring all bids off and reselling the animal in question. Bar JZ Ranches reserves the right to reject any bid.

Catalog Material

Special care has been taken to insure accuracy in the matter of EPDs, pedigrees, and other information included in this catalog. Any corrections will be announced on sale day. Bar JZ will not be responsible for catalog errors.

Health of the Cattle

The cattle have been calfhood vaccinated for 7-way clostridium, IBR, BVD, PI3, BRSV, haemophilus, pasteurella and dewormed with injectible Dectomax. Two-year-old and 18-month-old bulls have passed a breeding soundness exam. Yearling bulls will be examined in March and sell guaranteed to pass. Heifers have had two rounds of scour vaccination. They were ultrasounded for pregnancy. Health papers will be available. International health papers will be at the buyer's expense.

Guarantee

All bulls are guaranteed breeders and guaranteed against injury, death or dissatisfaction for any reason for the first breeding season. If a bull should prove otherwise, credit for a replacement (if available) or for next year's sale will be issued. We reserve the right to require a bull be returned to Bar JZ Ranches at the buyer's expense for examination before exchanges or credits are made. Registration papers must be returned. Credit can be used to purchase another bull, calculated by 75% of the purchase price minus \$1,750 salvage value for yearlings and \$2,000 for older bulls. If the bull did not die, but could be sold, the buyer would also have the market value to apply toward a new bull. In case of death, buyer must furnish proof to our satisfaction. Females are guaranteed bred. Kindly notify us as soon as possible if you intend to make a claim.

Volume Discount

5% will apply to each bull after 3 head, i.e. 4th, 5th, etc. This does not apply to females.

Terms

Terms are cash or check. Please make settlement for the cattle prior to leaving or loading out.

Liability

We will do our best to see there are no accidents (and we have never had one), but we will not be responsible for any accidents that might occur. You attend at your own risk.

Retained Interest Bulls

We are retaining a revenue sharing 1/4 semen interest in all bulls. In all cases, semen collection will not affect the buyer's breeding season, and the buyer retains full possession and salvage value.

Lunch

Complimentary lunch will be served.

Accommodations

Hydeout B&B, Highmore	605/852-2540
Prairie View Motel, Highmore	605/852-2261
Ramkota, Pierre	605/224-6877
Holiday Inn Express, Ft. Pierre	605/223-9045
Marci's Bed & Breakfast, Miller	605/853-3568
Super 8 Motel, Miller	605/853-2721

If you need help making reservations, give us a call.

DVAuction

Broadcasting Real-Time Auctions
www.dvauction.com

Watch & Bid online for FREE!

Can't make the sale?
Let DVAuction bring the sale to you!
Busy during the sale?
Let DVAuction represent your bid while you're away!

Visit www.DVAuction.com
and Register today!

1. Create an account at www.dvauction.com under the "register" tab
2. Apply for bidding approval by clicking the "details" tab at least 24 hours prior to the auction
3. Tune in for the sale and make your purchases!

For General Questions Please Contact Our Office:
(402) 316-5460 or support@dvauction.com

*High Speed Internet Access Required

Several customers reported that their online bids were not accepted and they missed out buying cattle for that reason. Don't let this be you!

DVAuction bidding tips:

- Bid on the lot as soon as it enters the sale ring. If you are actively bidding from the start, the auctioneer will be more likely to wait for an internet bid. What you hear over the internet may be delayed MANY seconds, which is a LONG time at an auction.
- Enter a proxy bid BEFORE that lot enters the ring. Proxy bids can be deleted or modified prior to the lot entering the ring. DVAuction will represent your proxy bid up to the amount entered, so it is best to stay with conventional bid increments. A \$4,999 proxy bid will not be accepted if the auctioneer is asking \$5,000.

Alternatives:

While DVAuction is a useful tool, the more reliable way to buy the cattle you want remains calling us or one of our representatives and bidding over the phone.

Sale Day Phones

Bar JZ South Ranch Sale Barn605/852-2583
Don Zilverberg, cell605/870-1302
Peg Zilverberg, cell605/870-1304
Seth Zilverberg, cell605/870-2169
Bridget Zilverberg, cell605/870-9441

Call us prior to sale day to arrange bidding by phone.

Livestock Videoing • Video Sales • Bid-by-Click Online Sales

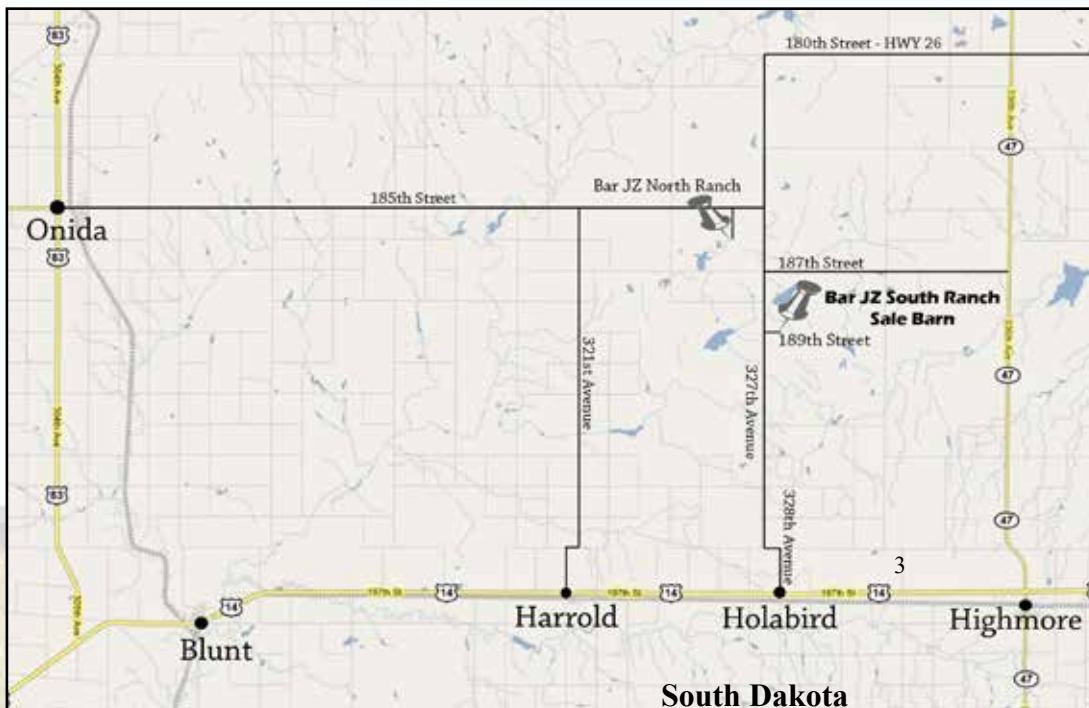
The Livestock Link™

The Livestock Link will once again be providing TVs for our video auction.

www.barjz.com

Don & Peg Zilverberg
Seth & Bridget Zilverberg

cattle@barjz.com or seth@barjz.com



Bar JZ Sale Location

Bar JZ South Ranch Sale Barn
32748 189th St.
Holabird, SD 57540

- ➔ from Holabird:
9 north, 1/2 east
- ➔ from west side of Onida:
23 east, 4 south, 1/2 east.
- ➔ from Junction of SD Hwy 47 & SD Hwy 26 (on gravel):
8 west, 9 south, 1/2 east
- ➔ from Bar JZ North Ranch:
1 east, 4 south, 1/2 east



Bar JZ Ranches
18542 326 Avenue
Holabird, SD 57540
605/852-2966



February 2024

Fellow Cattlemen,

Thanks for helping us reach 75 annual cattle sales! We have been blessed by meeting so many wonderful cattle families over the years. As many of you know, we are a family-oriented, ma & pa, grandma & grandpa operation.

Our family has been preparing for the future of the ranch by making changes, some hard and some already bearing fruit. We made the hard decision to sell our Limousin cow herd. Limousin cattle have been an important part of the ranch since John Zilverberg purchased a founding membership in NALF in 1970. While it is difficult to let them go, we hope that focusing on the Hereford herd will reduce our labor requirements in office management and grazing groups.

The fruit of change ripened in May when we calved the mature Hereford herd on fresh grass. Twenty-five cows gave birth on one particular day, and it was simply a beautiful day to tag calves. For us, having 25 calves one day in March would have been a crisis. We calved the Hereford heifers in March with nearly 90% of the calves coming through the barn.

The calves of our Hereford heifers entirely comprise the yearling Hereford bull offering in this sale. That gives you a better-than-ever selection of bulls to use on heifers. We have been increasing our Hereford cow numbers which allows us to offer you 2-year-old bulls in addition to our 18-month-old bulls. Our 2025 sale will bring you only 2-year-old bulls and 18-month bulls. This year's Limousin yearlings are from heifers and cows.

Over the last few years we retained most of our heifers to prepare for the calving transition. Now that our 2025 sale bulls are on the ground, we can offer you nearly half our bred heifers, which are the complete dispersion of Don & Peg's replacement heifers.

We look forward to seeing you at our sale, but we understand the demand of chores, especially in adverse weather. Please contact us if we can assist you in selecting a bull. You may bid online or bid over the phone. Be sure to check out our website with videos of the bulls.

Spring is coming!

Sincerely,

Don & Peg

Seth, Bridget, Solanus & Avila

P.S. Ask us about the complete dispersal of our fall calving Hereford herd.



PROGENY - BAR JZ BROADGAUGE 184H

Bar JZ Broadgauge 184H CHB Sire

{DLF,HYF,IEF,MSUDF,DBF}

Homozygous Polled 3/21/2020 P44138905

Sire: Churchill Broadway 858F

Dam: Bar JZ Wendy 343Y

Lots: Yrlg bulls 1-15. Bred heifers 242.

Broadgauge's dam and Buccaneer's dam tie for oldest cow in the herd at 13 years. His grandam was here for 15 years. The family has excellent feet and legs. Check out these sons for calving ease and lighter mature cow weights. Semen available \$25.

CED	BW	WW	YW	SC	MM	MCE	MCW	UDR	TEAT	CW	REA	MB	BMI	CHB
11.4	-1.0	54	83	1.4	23	7.4	66	1.30	1.20	79	.28	.54	499	174



1

Bar JZ Griffin 750L {DLF,HYF,IEF,MSUDF,DBF}

Polled Hereford Bull 3/3/2023 P44475076

Homo Polled

Bar JZ Broadgauge 184H

Churchill Broadway 858F

Bar JZ Wendy 343Y

RV Valor 9444G ET

Bar JZ Brynn 324G



Bar JZ Vivian 822J

750L BW 61 205 DAY WT 610 DAM'S AGE 2 L. EYE 100% R. EYE 100%

CED	BW	WW	YW	SC	MM	MCE	MCW	UDR	TEAT	CW	REA	MB	BMI	CHB
4.9	-0.8	60	87	1.5	28	3.3	75	1.50	1.40	87	.43	.38	494	159

750L. Heifer breeding prospect. Great birth to weaning spread in an extra fancy package.



2

Bar JZ Griffin 753L {DLF,HYF,IEF,MSUDF}

Polled Hereford Bull 3/7/2023 P4446977

Homo Polled

Bar JZ Broadgauge 184H

Churchill Broadway 858F

Bar JZ Wendy 343Y

Bar JZ Sherlock 530G

Bar JZ Sapphire 874E



Bar JZ Shirley 022J

753L BW 69 205 DAY WT 607 DAM'S AGE 2 L. EYE 100% R. EYE 100%

CED	BW	WW	YW	SC	MM	MCE	MCW	UDR	TEAT	CW	REA	MB	BMI	CHB
14.2	-1.6	53	86	1.0	28	13.5	62	1.30	1.30	76	.37	.37	475	150

753L. Heifer breeding prospect. Top 2% calving ease direct and maternal.



Hereford EPDS in this catalog current as of January 2024.

Breed Average EPDs for 2022 Born Hereford Calves

CED	BW	WW	YW	SC	MM	MCE	MCW	UDR	TEAT	CW	REA	MB	BMI	CHB
3.3	2.7	55	89	1.0	26	2.0	89	1.26	1.27	70	.43	.13	358	117

In our catalog EPDs highlighted in blue are in the upper 10% of the breed for that specific trait.

PROGENY - BAR JZ BROADGAUGE 184H

3

Bar JZ Griffin 767L {DLF,HYF,IEF,MSUDF}

Polled Hereford Bull 3/11/2023 P44475111

Homo Polled

Bar JZ Broadgauge 184H

Churchill Broadway 858F
Bar JZ Wendy 343Y

Bar JZ Brynn 841J

Frenzen Bar JZ Bruiser B30
Bar JZ Tulip 358G



767L BW 80 205 DAY WT 648 DAM'S AGE 2 L. EYE 100% R. EYE 100%

CED	BW	WW	YW	SC	MM	MCE	MCW	UDR	TEAT	CW	REA	MB	BMI	CHB
3.3	0.0	68	96	0.7	32	6.7	59	1.50	1.40	70	.21	.18	408	113

767L. One of the growthier bulls from our heifers.



4

Bar JZ Griffin 768L {DLF,HYF,IEF,MSUDF}

Polled Hereford Bull 3/11/2023 P44475650

Homo Polled

Bar JZ Broadgauge 184H

Churchill Broadway 858F
Bar JZ Wendy 343Y

Bar JZ Blessing 998J

Bar JZ Buccaneer 210E
Bar JZ Love Letter 155X



768L BW 91 205 DAY WT 648 DAM'S AGE 2 L. EYE 100% R. EYE 100%

CED	BW	WW	YW	SC	MM	MCE	MCW	UDR	TEAT	CW	REA	MB	BMI	CHB
0.5	4.4	62	98	1.9	28	6.2	99	1.30	1.30	72	.44	.12	335	125

768L. Grandam raised 13 calves. Born unassisted from a heifer.



5

Bar JZ Griffin 770L {DLF,HYF,IEF,MSUDF}

Polled Hereford Bull 3/11/2023 P44469708

Homo Polled

Bar JZ Broadgauge 184H

Churchill Broadway 858F
Bar JZ Wendy 343Y

Bar JZ Kindness 006J

Bar JZ Kickback 227E
Bar JZ Brynn 832E



770L BW 71 205 DAY WT 660 DAM'S AGE 2 L. EYE 10% R. EYE 100%

CED	BW	WW	YW	SC	MM	MCE	MCW	UDR	TEAT	CW	REA	MB	BMI	CHB
6.3	0.3	64	97	1.4	34	4.4	73	1.30	1.20	72	.30	.26	482	128

770L. Heifer breeding prospect. Extra thickness.



PROGENY - BAR JZ BROADGAUGE 184H

6

Bar JZ Griffin 771L {DLF,HYF,IEF,MSUDF}

Polled Hereford Bull 3/12/2023 P44475601

Homo Polled

Bar JZ Broadgauge 184H

Churchill Broadway 858F
Bar JZ Wendy 343Y

Bar JZ Blessing 923J

Bar JZ Buccaneer 210E
Bar JZ Corabelle 014E



771L BW 78 205 DAY WT 584 DAM'S AGE 2 L. EYE 90% R. EYE 100%

CED	BW	WW	YW	SC	MM	MCE	MCW	UDR	TEAT	CW	REA	MB	BMI	CHB
9.4	1.6	62	94	1.6	23	7.3	78	1.30	1.30	81	.55	.18	383	141

771L. Heifer breeding prospect.



Lot 6



Bar JZ Blessing 923J, dam of Lot 6



Bar JZ Kindness 997J, dam of Lot 7

7

Bar JZ Griffin 779L {DLF,HYF,IEF,MSUDF}

Polled Hereford Bull 3/14/2023 P44475649

Homo Polled

Bar JZ Broadgauge 184H

Churchill Broadway 858F
Bar JZ Wendy 343Y

Bar JZ Kindness 997J

Bar JZ Kickback 227E
Bar JZ Sleepover 791E



779L BW 72 205 DAY WT 621 DAM'S AGE 2 L. EYE 100% R. EYE 100%

CED	BW	WW	YW	SC	MM	MCE	MCW	UDR	TEAT	CW	REA	MB	BMI	CHB
9.3	0.5	57	88	0.7	27	6.6	84	1.40	1.30	71	.09	.34	434	134

779L. Heifer breeding prospect.



Zilverberg

Lot 7

8

Bar JZ Griffin 780L {DLF,HYF,IEF,MSUDF,DBP}

Polled Hereford Bull 3/14/2023 P44475628

Homo Polled

Bar JZ Broadgauge 184H

Churchill Broadway 858F
Bar JZ Wendy 343Y

Bar JZ Brynn 950J

Frenzen Bar JZ Bruiser B30
Bar JZ Poppy 391G



780L BW 78 205 DAY WT 605 DAM'S AGE 2 L. EYE 100% R. EYE 100%

CED	BW	WW	YW	SC	MM	MCE	MCW	UDR	TEAT	CW	REA	MB	BMI	CHB
2.2	1.7	59	93	1.6	30	5.0	92	1.30	1.20	81	.46	.37	525	156

780L. Heifer breeding prospect.



Lot 8

PROGENY - BAR JZ BROADGAUGE 184H

9

Bar JZ Griffin 784L {DLF,HYF,IEF,MSUDF}

Polled Hereford Bull 3/14/2023 P44475173

Homo Polled

Bar JZ Broadgauge 184H

Churchill Broadway 858F
Bar JZ Wendy 343Y

Bar JZ Blessing 887J

Bar JZ Buccaneer 210E
Bar JZ Topaz 007E



784L BW 78 205 DAY WT 644 DAM'S AGE 2 L. EYE 100% R. EYE 20%

CED	BW	WW	YW	SC	MM	MCE	MCW	UDR	TEAT	CW	REA	MB	BMI	CHB
11.6	1.9	63	92	1.7	32	7.1	63	1.40	1.30	82	.60	.30	420	145

784L. Heifer breeding prospect.



10

Bar JZ Griffin 792L {DLF,HYF,IEF,MSUDF}

Polled Hereford Bull 3/16/2023 P44475634

Homo Polled

Bar JZ Broadgauge 184H

Churchill Broadway 858F
Bar JZ Wendy 343Y

Bar JZ Brynn 961J

Frenzen Bar JZ Bruiser B30
Bar JZ Heartstrings 852E



792L BW 80 205 DAY WT 616 DAM'S AGE 2 L. EYE 100% R. EYE 100%

CED	BW	WW	YW	SC	MM	MCE	MCW	UDR	TEAT	CW	REA	MB	BMI	CHB
-2.2	5.2	73	111	1.3	27	2.2	117	1.30	1.30	75	.47	.16	385	129

792L. 3 generations of dams in the herd, with the oldest having her 11th calf this year.



11

Bar JZ Griffin 817L {DLF,HYF,IEF,MSUDF,DBP}

Polled Hereford Bull 3/30/2023 P44475005

Homo Polled

Bar JZ Broadgauge 184H

Churchill Broadway 858F
Bar JZ Wendy 343Y

Bar JZ Blessing 813J

Bar JZ Buccaneer 210E
Bar JZ Poppy 348G



817L BW 68 205 DAY WT 598 DAM'S AGE 2 L. EYE 100% R. EYE 100%

CED	BW	WW	YW	SC	MM	MCE	MCW	UDR	TEAT	CW	REA	MB	BMI	CHB
12.9	-1.0	55	85	1.3	29	8.5	60	1.40	1.40	74	.27	.32	461	143

817L. Heifer breeding prospect. 3 generations of dams currently in the herd.



www.barjz.com
Video of each sale lot

Homozygous Polled - The bull carries no horned genes and will sire all polled calves, even on horned cows. The test is highly accurate but not a guarantee. **Heterozygous polled** bulls carry one polled gene and one horned gene, and should sire mostly polled calves on polled cows and should sire 1/2 polled and 1/2 horned calves on horned cows.

Homo Polled

PROGENY - BAR JZ BROADGAUGE 184H

12 Bar JZ Griffin 823L {DLF,HYF,IEF,MSUDF}
 Polled Hereford Bull 4/1/2023 P44475204

Homo Polled

Bar JZ Broadgauge 184H

Churchill Broadway 858F
 Bar JZ Wendy 343Y
 Innisfail WHR X651/723 4013 ET
 Bar JZ Felicity 644D



Bar JZ Imagination 916J

823L BW 60 205 DAY WT 568 DAM'S AGE 2 L. EYE 100% R. EYE 100%

CED	BW	WW	YW	SC	MM	MCE	MCW	UDR	TEAT	CW	REA	MB	BMI	CHB
14.2	-1.5	53	79	1.2	14	10.8	58	1.40	1.30	61	.21	.53	395	143

823L. Heifer breeding prospect. Top 2% of breed for both direct and maternal calving ease.



13 Bar JZ Griffin 825L {DLF,HYF,IEF,MSUDF,DBP}
 Polled Hereford Bull 4/2/2023 P44475631

Homo Polled

Bar JZ Broadgauge 184H

Churchill Broadway 858F
 Bar JZ Wendy 343Y
 WHR Beefmaker 4013 191 311E
 Bar JZ Shyanna 046F



Bar JZ Eloise 957J

825L BW 69 205 DAY WT 628 DAM'S AGE 2 L. EYE 100% R. EYE 100%

CED	BW	WW	YW	SC	MM	MCE	MCW	UDR	TEAT	CW	REA	MB	BMI	CHB
12.4	-0.8	58	91	1.4	27	6.7	59	1.20	1.20	75	.21	.34	356	141

825L. Heifer breeding prospect. 3 generations of dams currently in the herd.



14 Bar JZ Griffin 830L {DLF,HYF,IEF,MSUDF,DBP}
 Polled Hereford Bull 4/5/2023 P44475624

Homo Polled

Bar JZ Broadgauge 184H

Churchill Broadway 858F
 Bar JZ Wendy 343Y
 Bar JZ Sleep Tight 412F
 Bar JZ Glory 596Z



Bar JZ Tonja 946J

830L BW 80 205 DAY WT 566 DAM'S AGE 2 L. EYE 100% R. EYE 100%

CED	BW	WW	YW	SC	MM	MCE	MCW	UDR	TEAT	CW	REA	MB	BMI	CHB
9.1	0.8	52	84	1.0	19	8.8	79	1.30	1.30	61	.12	.38	389	133

830L. Grandam had 10 calves for us. Born unassisted from a heifer.



15 Bar JZ Griffin 831L {DLF,HYF,IEF,MSUDF}
 Polled Hereford Bull 4/6/2023 P44475644

Homo Polled

Bar JZ Broadgauge 184H

Churchill Broadway 858F
 Bar JZ Wendy 343Y
 Bar JZ Buccaneer 210E
 Bar JZ Serendipity 201F



Bar JZ Blessing 984J

831L BW 73 205 DAY WT 616 DAM'S AGE 2 L. EYE 100% R. EYE 100%

CED	BW	WW	YW	SC	MM	MCE	MCW	UDR	TEAT	CW	REA	MB	BMI	CHB
13.1	0.2	59	93	1.3	26	9.8	96	1.40	1.30	75	.45	.28	392	144

831L. Heifer breeding prospect. Most of his EPDs beat the average.



PROGENY - RV VALOR 9444G

RV Valor 9444G ET

{CHB,DLF,HYF,IEF,MSUDF,MDF}

Homozygous Polled 3/18/2019 P44076080

Sire: JDH Victor 719T 33Z ET

Dam: RV Bobbi 1404

Lots: Yrlg bulls 16-18. Fall bulls 50-54. Two-yr-old bulls 79.
Bred heifers 201, 205, 206, 209, 216, 224, 225, 230.

Valor has left his mark in our herd! He sired our 2023 high seller, On Demand, going to Hoffman Ranch and Genex. On Demand was used around the nation this breeding season, including in our herd. The Valor daughters have exceptional udder quality.

CED	BW	WW	YW	SC	MM	MCE	MCW	UDR	TEAT	CW	REA	MB	BMI	CHB
8.1	-0.4	60	89	1.1	23	-1.5	85	1.70	1.70	103	.82	.27	469	176



16

Bar JZ Valiant 751L {DLF,HYF,IEF,MSUDF}

Polled Hereford Bull 3/4/2023 P44475629

Homo Polled

RV Valor 9444G ET

JDH Victor 719T 33Z ET
RV Bobbi 1404



Bar JZ Blessing 951J

Bar JZ Buccaneer 210E
Bar JZ Truly 025F

751L BW 80 205 DAY WT 599 DAM'S AGE 2 L. EYE 100% R. EYE 100%

CED	BW	WW	YW	SC	MM	MCE	MCW	UDR	TEAT	CW	REA	MB	BMI	CHB
8.0	2.4	72	111	1.5	32	6.1	109	1.50	1.50	87	.77	.23	431	157

751L. Highest growth EPDs of the offering. Born unassisted from a heifer.



17

Bar JZ Valiant 756L {DLF,HYF,IEF,MSUDF}

Polled Hereford Bull 3/7/2023 P44475143

Homo Polled

RV Valor 9444G ET

JDH Victor 719T 33Z ET
RV Bobbi 1404



Bar JZ Blessing 860J

Bar JZ Buccaneer 210E
Bar JZ Shyanna 297G

756L BW 73 205 DAY WT 705 DAM'S AGE 2 L. EYE 100% R. EYE 100%

CED	BW	WW	YW	SC	MM	MCE	MCW	UDR	TEAT	CW	REA	MB	BMI	CHB
8.2	0.8	70	102	0.9	35	7.8	83	1.40	1.60	85	.70	.26	429	144

756L. Heifer breeding prospect. Highest weaning weight of the offering.
Super set of EPDs.



18

Bar JZ Valiant 761L {DLF,HYF,IEF,MSUDF}

Polled Hereford Bull 3/8/2023 P44475642

Homo Polled

RV Valor 9444G ET

JDH Victor 719T 33Z ET
RV Bobbi 1404



Bar JZ Imagination 982J

Innisfail WHR X651/723 4013 ET
Bar JZ Heartstrings 960E

761L BW 65 205 DAY WT 650 DAM'S AGE 2 L. EYE 100% R. EYE 100%

CED	BW	WW	YW	SC	MM	MCE	MCW	UDR	TEAT	CW	REA	MB	BMI	CHB
11.3	-1.0	60	89	1.3	31	3.1	58	1.70	1.70	85	.30	.32	484	142

761L. Heifer breeding prospect. Great spread from birth to weaning. Top 1% udder and teat.



PROGENY - BAR JZ VANQUISH 329J

Bar JZ Vanquish 329J

{DLF,HYF,IEF,MSUDF}

Homozygous Polled 3/8/2021 P44248339

Sire: RV Valor 9444G

Dam: Bar JZ Heartstrings 325G, pictured on page 48.

Lots: Yrlg bulls 19-23.

Vanquish was one of the most sought-after bulls in our 2022 sale going to Gant Polled Herefords. He was the highest post-weaning gainer, and exceptionally docile. All of his dam's calves have weaned heavier than average. Semen available.

Co-owned with Gant Polled Herefords.

CED	BW	WW	YW	SC	MM	MCE	MCW	UDR	TEAT	CW	REA	MB	BMI	CHB
8.5	-0.9	56	93	0.9	15	-1.1	91	1.40	1.50	68	.35	.20	283	117



19

Bar JZ Triumph 758L {DLF,HYF,IEF,MSUDF,DBP}

Polled Hereford Bull 3/8/2023 P44475108

Homo Polled

Bar JZ Vanquish 329J

RV Valor 9444G ET

Bar JZ Heartstrings 325G

Bar JZ Buccaneer 210E

Bar JZ Poppy 376G



Bar JZ Blessing 835J

758L BW 80 205 DAY WT 601 DAM'S AGE 2 L. EYE 50% R. EYE 75%

CED	BW	WW	YW	SC	MM	MCE	MCW	UDR	TEAT	CW	REA	MB	BMI	CHB
9.6	0.6	59	96	1.2	25	3.8	79	1.50	1.50	77	.46	.11	372	125

758L. Born unassisted from a heifer.



20

Bar JZ Triumph 763L {DLF,HYF,IEF,MSUDF}

Polled Hereford Bull 3/10/2023 P44475202

Homo Polled

Bar JZ Vanquish 329J

RV Valor 9444G ET

Bar JZ Heartstrings 325G

Bar JZ Buccaneer 210E

Bar JZ Shyanna 246G



Bar JZ Blessing 912J

763L BW 61 205 DAY WT 601 DAM'S AGE 2 L. EYE 100% R. EYE 100%

CED	BW	WW	YW	SC	MM	MCE	MCW	UDR	TEAT	CW	REA	MB	BMI	CHB
14.5	-2.0	57	85	1.1	29	10.0	94	1.30	1.30	76	.36	.05	309	110

763L. Heifer breeding prospect. Top 1% of breed for both calving ease direct and maternal.



Bar JZ Imagination 982J, dam of Lot 18



Bar JZ Blessing 912J, dam of Lot 20

PROGENY - BAR JZ VANQUISH 329J

21

Bar JZ Triumph 775L {DLF,HYF,IEF,MSUDF,DBP}

Polled Hereford Bull 3/13/2023 P44475145

Homo Polled

Bar JZ Vanquish 329J

RV Valor 9444G ET
Bar JZ Heartstrings 325G

Bar JZ Rose Red 870J

ILR Red Power 456B
Bar JZ Tulip 302G



775L BW 69 205 DAY WT 576 DAM'S AGE 2 L. EYE 100% R. EYE 100%

CED	BW	WW	YW	SC	MM	MCE	MCW	UDR	TEAT	CW	REA	MB	BMI	CHB
10.3	-1.5	53	82	1.0	22	1.6	86	1.40	1.60	56	.29	.04	335	90

775L. Heifer breeding prospect. 3 generations of dams currently in the herd.



22

Bar JZ Triumph 785L {DLF,HYF,IEF,MSUDF}

Polled Hereford Bull 3/15/2023 P44475110

Homo Polled

Bar JZ Vanquish 329J

RV Valor 9444G ET
Bar JZ Heartstrings 325G

Bar JZ Blessing 838J

Bar JZ Buccaneer 210E
Bar JZ Sleepover 387G



785L BW 67 205 DAY WT 593 DAM'S AGE 2 L. EYE 100% R. EYE 100%

CED	BW	WW	YW	SC	MM	MCE	MCW	UDR	TEAT	CW	REA	MB	BMI	CHB
13.9	-0.8	59	86	1.6	30	3.1	68	1.50	1.50	69	.72	.09	376	114

785L. Heifer breeding prospect. Huge REA EPD for a heifer bull.



23

Bar JZ Triumph 798L {DLF,HYF,IEF,MSUDF}

Polled Hereford Bull 3/19/2023 P44475608

Homo Polled

Bar JZ Vanquish 329J

RV Valor 9444G ET
Bar JZ Heartstrings 325G
Innisfail WHR X651/723 4013 ET
Bar JZ Brynn 864E



798L BW 70 205 DAY WT 624 DAM'S AGE 2 L. EYE 100% R. EYE 100%

CED	BW	WW	YW	SC	MM	MCE	MCW	UDR	TEAT	CW	REA	MB	BMI	CHB
7.1	0.4	60	96	1.1	26	0.7	62	1.40	1.40	77	.49	.30	376	132

798L. Heifer breeding prospect.



Cold weather doesn't stop Solanus!



Barn cats often pester the note keepers!

PROGENY - NJW RIDGE 254G

NJW 139C 103C Ridge 254G

{DLF,HYF,IEF,MSUDF,MDF}

Homozygous Polled 3/11/2019 P44056537
Sire: NJW 73S 38W Ridge 103C ET
Dam: NJW 149Z 88X Lexy 139C ET

Lots: Yrlg bulls 24-25. Fall bulls 57. Two-yr-old bulls 70, 71, 74, 76, 77, 80, 84, 85. Bred heifers: 208, 212, 219, 222, 223, 226, 232, 234, 237.

Ridge, dark red, goggle-eyed. Used heavily at NJW on cows and heifers. Average BW on first calf crop at NJW was 83 lbs. Average BW on first calf crop at Bar JZ was 77 lbs on 62 head. First daughters calving at NJW have beautiful udders. His dam, 139C an 88X daughter, is a favorite and a top producer. Nineteen 254G progeny averaged \$8118 in the 2022 NJW Sale.

CED	BW	WW	YW	SC	MM	MCE	MCW	UDR	TEAT	CW	REA	MB	BMI	CHB
4.5	2.1	65	97	1.1	41	-2.6	68	1.50	1.60	67	.26	.09	476	91



24 Bar JZ Rimrider 776L {DLF,HYF,IEF,MSUDF}

Polled Hereford Bull 3/12/2023 P44475632

Het/P
Scurs

NJW 139C 103C Ridge 254G NJW 73S 38W Ridge 103C ET
NJW 149Z 88X Lexy 139C ET



Bar JZ Vivian 959J RV Valor 9444G ET
Bar JZ Glimmer 672D

776L BW 73 205 DAY WT 564 DAM'S AGE 2 L. EYE 100% R. EYE 100%

CED	BW	WW	YW	SC	MM	MCE	MCW	UDR	TEAT	CW	REA	MB	BMI	CHB
8.2	1.2	52	79	0.8	35	0.7	45	1.40	1.50	64	.37	.22	463	113

776L. Heifer breeding prospect. Lots of longevity from the cows in his bottom pedigree.



25 Bar JZ Rimrider 782L {DLF,HYF,IEF,MSUDF}

Polled Hereford Bull 3/14/2023 P44475203

Scurs

NJW 139C 103C Ridge 254G NJW 73S 38W Ridge 103C ET
NJW 149Z 88X Lexy 139C ET



Bar JZ Brynn 914J Frenzen Bar JZ Bruiser B30
Bar JZ Lollipop 008A

782L BW 74 205 DAY WT 585 DAM'S AGE 2 L. EYE 100% R. EYE 0

CED	BW	WW	YW	SC	MM	MCE	MCW	UDR	TEAT	CW	REA	MB	BMI	CHB
3.6	1.0	62	95	0.8	37	-0.5	106	1.50	1.60	76	.37	.03	409	106

782L. Heifer breeding prospect.



Bar JZ Rimrider 505K {DLF,HYF,IEF,MSUDF,MDF}

Homozygous Polled 2/28/2022 P44359497
Sire: NJW 139C 103C Ridge 254G
Dam: Bar JZ Brynn 743H

Rimrider 505K was one of the high sellers in our 2023 sale, purchased by Semex. Co-owned with Semex.

CED	BW	WW	YW	SC	MM	MCE	MCW	UDR	TEAT	CW	REA	MB	BMI	CHB
7.6	0.5	59	102	1.4	44	-4.9	75	1.50	1.60	75	.38	.13	445	113



PROGENY - BAR JZ BUCCANEER 210E

Bar JZ Buccaneer 210E {DLF,HYF,IEF,MSUDF,MDF}

Homozygous Polled 3/11/2017 P43797256
Sire: Frenzen Bar JZ Bruiser B30
Dam: Bar JZ Fern 531Y* pictured on page 19.

Lots: Yrlg bulls 26-27. Two-yr-old bulls 82. Bred heifers 203, 207, 239.
Buccaneer has proven himself as a top 1% of the breed calving ease sire. His dam ties for oldest cow in our herd at 13 years. She has perfect feet and legs. His daughters hold his udder and teat EPDs in the top 1% of the breed, and they produced many yearling bulls in this sale. Semen available through Semex.

CED	BW	WW	YW	SC	MM	MCE	MCW	UDR	TEAT	CW	REA	MB	BMI	CHB
16.8	-1.3	57	76	1.8	35	15.1	41	1.70	1.70	77	.74	.06	460	122



26 Bar JZ Maverick 772L {DLF,HYF,IEF,MSUDF}

Polled Hereford Bull 3/12/2023 P44475623

Homo Polled

Bar JZ Buccaneer 210E Frenzen Bar JZ Bruiser B30
Bar JZ Fern 531Y
Bar JZ Imagination 945J Innisfail WHR X651/723 4013 ET
Bar JZ Serendipity 068F



772L BW 79 205 DAY WT 618 DAM'S AGE 2 L. EYE 100% R. EYE 100%

CED	BW	WW	YW	SC	MM	MCE	MCW	UDR	TEAT	CW	REA	MB	BMI	CHB
8.0	2.7	63	88	1.7	29	7.2	101	1.50	1.50	83	.68	.21	388	135

772L. Heifer breeding prospect.



27 Bar JZ Maverick 778L {DLF,HYF,IEF,MSUDF}

Polled Hereford Bull 3/14/2023 P44475627

Homo Polled

Bar JZ Buccaneer 210E Frenzen Bar JZ Bruiser B30
Bar JZ Fern 531Y
Bar JZ Brynn 949J Frenzen Bar JZ Bruiser B30
Bar JZ Valerie 718D



778L BW 79 205 DAY WT 598 DAM'S AGE 2 L. EYE 25% R. EYE 100%

CED	BW	WW	YW	SC	MM	MCE	MCW	UDR	TEAT	CW	REA	MB	BMI	CHB
7.5	1.6	60	85	1.4	32	2.3	68	1.50	1.50	67	.44	.03	462	101

778L. Heifer breeding prospect.



Lot 28 out of sale.



PROGENY - BAR JZ BROADSIDE 125H

Bar JZ Broadside 125H {DLF,HYF,IEF,MSUDF,MDF}

Homozygous Polled 3/08/2020 P44138429
Sire: Churchill Broadway 858F
Dam: Bar JZ Eloquent 034F

Lots: Yrlg bulls 29-32. Fall bulls 55.
Broadside highlighted our 2021 sale and was purchased by Schroeder Brothers, NE. His calves inherit the extra depth, and his dam continues to produce heavier than average calves while herself being a lighter than average cow. Co-owned with Schroeder Brothers.

CED	BW	WW	YW	SC	MM	MCE	MCW	UDR	TEAT	CW	REA	MB	BMI	CHB
8.6	0.6	56	99	1.2	24	11.2	77	1.40	1.30	77	.18	.41	470	157



29 Bar JZ Broadbeam 764L {DLF,HYF,IEF,MSUDF}

Polled Hereford Bull 3/10/2023 P44475199

Homo Polled

Bar JZ Broadside 125H Churchill Broadway 858F
Bar JZ Eloquent 034F
Bar JZ Blessing 906J Bar JZ Buccaneer 210E
Bar JZ Serendipity 289G

AHA GE-EPD

764L BW 82 205 DAY WT 615 DAM'S AGE 2 L. EYE 100% R. EYE 100%

CED	BW	WW	YW	SC	MM	MCE	MCW	UDR	TEAT	CW	REA	MB	BMI	CHB
12.1	2.4	63	99	1.5	31	12.9	48	1.50	1.50	69	.29	.13	468	113

764L. Born unassisted from a heifer.



30 Bar JZ Broadbeam 781L {DLF,HYF,IEF,MSUDF}

Polled Hereford Bull 3/14/2023 P44475600

Homo Polled

Bar JZ Broadside 125H Churchill Broadway 858F
Bar JZ Eloquent 034F
Bar JZ Brynn 922J Frenzen Bar JZ Bruiser B30
Bar JZ Scarlet 740U

AHA GE-EPD

781L BW 66 205 DAY WT 557 DAM'S AGE 2 L. EYE 100% R. EYE 100%

CED	BW	WW	YW	SC	MM	MCE	MCW	UDR	TEAT	CW	REA	MB	BMI	CHB
8.7	-0.6	54	85	0.6	29	7.2	53	1.40	1.40	75	.43	.29	546	145

781L. Heifer breeding prospect.



31 Bar JZ Broadbeam 786L {DLF,HYF,IEF,MSUDF}

Polled Hereford Bull 3/15/2023 P44469692

Homo Polled

Bar JZ Broadside 125H Churchill Broadway 858F
Bar JZ Eloquent 034F
Bar JZ Brienne 004J Bar JZ Bridger 622G
Bar JZ Glimmer 496C

AHA GE-EPD

786L BW 73 205 DAY WT 609 DAM'S AGE 2 L. EYE 100% R. EYE 100%

CED	BW	WW	YW	SC	MM	MCE	MCW	UDR	TEAT	CW	REA	MB	BMI	CHB
6.5	0.7	62	97	1.0	31	7.3	93	1.30	1.30	79	.33	.26	448	142

786L. Heifer breeding prospect.



PROGENY - BAR JZ BROADSIDE 125H

32 **Bar JZ Broadbeam 794L** {DLF,HYF,IEF,MSUDF}
 Polled Hereford Bull 3/18/2023 P44475201



Bar JZ Broadside 125H

Churchill Broadway 858F
 Bar JZ Eloquent 034F
 Frenzen Bar JZ Bruiser B30
 Bar JZ Virginia 340Y



Bar JZ Brynn 909J

794L BW 85 205 DAY WT 600 DAM'S AGE 2 L. EYE 100% R. EYE 100%

CED	BW	WW	YW	SC	MM	MCE	MCW	UDR	TEAT	CW	REA	MB	BMI	CHB
8.5	2.0	60	96	0.8	27	13.5	69	1.40	1.30	72	.41	.22	503	129

794L. Born unassisted from a heifer.



TH Frontier 174E
 {DLF,HYF,IEF,MSUDF,MDF}

Homozygous Polled 1/30/2017 P43818822
 Sire: TH 403A 475Z Pioneer 358C ET
 Dam: FTF Trusting Lady 312A

Lots: Two-yr-old bulls 72. Bred heifers 210, 217, 220, 227, 228, 233, 240, 247.

We selected **Frontier** with nearly 1900 progeny recorded as a high accuracy sire that could deliver low birth weight and exceptional growth.

CED	BW	WW	YW	SC	MM	MCE	MCW	UDR	TEAT	CW	REA	MB	BMI	CHB
8.3	0.4	74	122	1.5	50	87	1.0	117	1.30	1.30	.58	-.13	447	108



Innisfail WHR X651/723 4020 ET
 {CHB,DLF,HYF,IEF,MSUDF,MDF}

Homozygous Polled 9/16/2014 P43541951
 Sire: Efbef TFL U208 Tested X651 ET
 Dam: Innisfail P230 T723

Lots: Fall bulls 56. Two-yr-old bulls 73, 75, 83. Bred heifers 204, 211, 213, 214, 229.

4020, the "go to" heifer bull at Whitehawk Ranch. We used him for calving ease, udder quality, and carcass merit.

CED	BW	WW	YW	SC	MM	MCE	MCW	UDR	TEAT	CW	REA	MB	BMI	CHB
8.0	1.9	78	110	1.0	24	6.1	109	1.40	1.30	71	.37	.75	518	171



Bar JZ Fabulous 207H
 {DLF,HYF,IEF,MSUDF}

Homozygous Polled 3/25/2020 P44139305
 Sire: Innisfail WHR X651/723 4013 ET
 Dam: Bar JZ Heartstrings 960E

Lots: Fall bulls 59, 60.

Fabulous comes from a great line of cows that have stayed in the herd for years. He has done a good job of keeping birthweights moderate to low.

CED	BW	WW	YW	SC	MM	MCE	MCW	UDR	TEAT	CW	REA	MB	BMI	CHB
7.0	2.1	59	102	0.8	19	0.1	103	1.40	1.20	79	.37	.24	425	149



POLLED HEREFORD 18-MONTH-OLD BULLS

50

Bar JZ Valiant 710K{DLF,HYF,IEF,MSUDF}
 Polled Hereford Bull 8/14/2022 P44397419



RV Valor 9444G ET

JDH Victor 719T 33Z ET
 RV Bobbi 1404
 KCF Bennett Summit B261 ET
 Bar JZ Hannah 087B



Bar JZ Sapphire 874E

710K BW 75 205 DAY WT 592 DAM'S AGE 5 L. EYE 100% R. EYE 100%

CED	BW	WW	YW	SC	MM	MCE	MCW	UDR	TEAT	CW	REA	MB	BMI	CHB
8.2	1.8	69	114	0.8	29	6.5	109	1.5	1.5	101	.81	.22	426	167

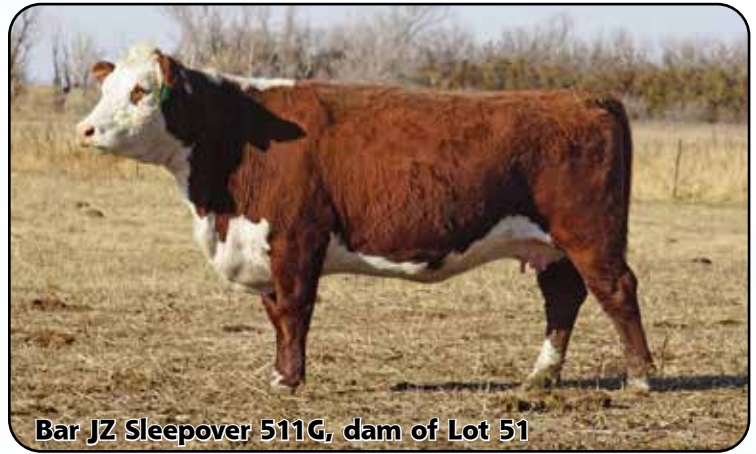
710K. 1-6-2024 weight 1324; scrotal 33.5 cm. Heifer breeding prospect.



Lot 50



Bar JZ Sapphire 874E, dam of Lot 50



Bar JZ Sleepover 511G, dam of Lot 51

51

Bar JZ Valiant 711K{DLF,HYF,IEF,MSUDF}
 Polled Hereford Bull 8/14/2022 P44397397



RV Valor 9444G ET

JDH Victor 719T 33Z ET
 RV Bobbi 1404
 Bar JZ Sleep On 738C
 Bar JZ Crimson 906E



Bar JZ Sleepover 511G

711K BW 80 205 DAY WT 537 DAM'S AGE 3 L. EYE 100% R. EYE 100%

CED	BW	WW	YW	SC	MM	MCE	MCW	UDR	TEAT	CW	REA	MB	BMI	CHB
5.8	0.9	60	96	1.0	31	1.1	103	1.60	1.70	79	.70	-.06	426	128

711K. 1-6-2024 weight 1184; scrotal 36.0 cm. Heifer breeding prospect.



Lot 51

Lot 52 out of sale.

53

Bar JZ Valiant 713K{DLF,HYF,IEF,MSUDF}
 Polled Hereford Bull 8/16/22 P44397399



RV Valor 9444G ET

JDH Victor 719T 33Z ET
 RV Bobbi 1404
 MSU Xerox 20X
 Bar JZ Rebecca 954W



Bar JZ Zoey 649D

713K BW 66 205 DAY WT 534 DAM'S AGE 6 L. EYE 100% R. EYE 50%

CED	BW	WW	YW	SC	MM	MCE	MCW	UDR	TEAT	CW	REA	MB	BMI	CHB
8.2	0.2	58	89	1.4	26	-1.0	112	1.40	1.40	66	.37	.10	356	109

713K. Homozygous polled by pedigree. 1-6-2024 weight 1202; scrotal 35.5 cm. Heifer breeding prospect.



Lot 53

POLLED HEREFORD 18-MONTH-OLD BULLS

54

Bar JZ Valiant 714K{DLF,HYF,IEF,MSUDF}

Polled Hereford Bull 8/16/22 P44397407

Homo Polled

RV Valor 9444G ET

JDH Victor 719T 33Z ET
RV Bobbi 1404



Bar JZ Tequila Rose 775H

NJW 33TB 100W Trust 167Y
Bar JZ Crimson 167F

714K BW 80 205 DAY WT 568 DAM'S AGE 2 L. EYE 100% R. EYE 100%

CED	BW	WW	YW	SC	MM	MCE	MCW	UDR	TEAT	CW	REA	MB	BMI	CHB
8.0	1.6	61	97	0.9	26	3.3	106	1.30	1.30	88	.64	.44	409	167

714K. 1-6-2024 weight 1224; scrotal 34.0 cm. Born unassisted from a heifer.



Lot 54

55

Bar JZ Broadbeam 716K{DLF,HYF,IEF,MSUDF}

Polled Hereford Bull 8/18/2022 P44397413

Homo Polled

Bar JZ Broadside 125H

Churchill Broadway 858F
Bar JZ Eloquent 034F



Bar JZ Brynn 793E

Frenzen Bar JZ Bruiser B30
Bar JZ Virginia 407Y

716K BW 69 205 DAY WT 520 DAM'S AGE 5 L. EYE 100% R. EYE 100%

CED	BW	WW	YW	SC	MM	MCE	MCW	UDR	TEAT	CW	REA	MB	BMI	CHB
14.1	-1.8	53	76	0.3	25	9.7	49	1.50	1.60	65	.24	.44	523	133

716K. 1-6-2024 weight 1144; scrotal 31.5 cm. Heifer breeding prospect.



Lot 55

56

Bar JZ Fortytwenty 717K{DLF,HYF,IEF,MSUDF}

Polled Hereford Bull 8/22/2022 P44397395

Homo Polled

Innisfail WHR X651/723
4020 ET

Efbeef TFL U208 Tested X651 ET
Innisfail P230 T723



Bar JZ Brynn 505G

Frenzen Bar JZ Bruiser B30
Bar JZ Glimmer 476C

717K BW 90 205 DAY WT 706 DAM'S AGE 3 L. EYE 100% R. EYE 100%

CED	BW	WW	YW	SC	MM	MCE	MCW	UDR	TEAT	CW	REA	MB	BMI	CHB
4.1	3.0	74	106	2.3	31	8.4	79	1.20	1.20	73	.43	.23	544	118

717K. 1-6-2024 weight 1378; scrotal 41 cm. Highest growth bull of the fall bulls.



Lot 56

57

Bar JZ Rimrider 719K{DLF,HYF,IEF,MSUDF,DBP}

Polled Hereford Bull 8/24/2022 P44397391

Homo Polled

NJW 139C 103C Ridge 254G

NJW 73S 38W Ridge 103C ET
NJW 149Z 88X Lexy 139C ET
Bar JZ Surgical Strike 014D ET
Bar JZ Glory 319C



Bar JZ Serendipity 119F

719K BW 89 205 DAY WT 490 DAM'S AGE 4 L. EYE 100% R. EYE 100%

CED	BW	WW	YW	SC	MM	MCE	MCW	UDR	TEAT	CW	REA	MB	BMI	CHB
0.7	4.3	63	103	1.4	30	-0.9	63	1.50	1.40	71	.79	.10	446	117

719K. Homozygous polled by pedigree. 1-6-2024 weight 1174; scrotal 34.5 cm. Extra rear quarter shape.



Lot 57

Lot 58 out of sale.

POLLED HEREFORD 18-MONTH-OLD BULLS

59

Bar JZ Fanfare 724K {DLF,HYF,IEF,MSUDF}

Polled Hereford Bull 10/1/2022 P44397396



Bar JZ Fabulous 207H

Innisfail WHR X651/723 4013 ET
Bar JZ Heartstrings 960E



Bar JZ Sleepover 507G

Bar JZ Sleep On 738C
Bar JZ Brynn 793E

724K BW 82 205 DAY WT 605 DAM'S AGE 3 L. EYE 100% R. EYE 100%

CED	BW	WW	YW	SC	MM	MCE	MCW	UDR	TEAT	CW	REA	MB	BMI	CHB
5.4	1.2	65	102	0.4	30	0.0	89	1.40	1.30	80	.63	.18	457	135

724K. 1-6-2024 weight 1146; scrotal 34.0 cm. Moderate birth with good growth and carcass.



Lot 59

60

Bar JZ Fanfare 725K {DLF,HYF,IEF,MSUDF}

Polled Hereford Bull 10/6/2022 P44397389



Bar JZ Fabulous 207H

Innisfail WHR X651/723 4013 ET
Bar JZ Heartstrings 960E



Bar JZ Brynn 019E

Frenzen Bar JZ Bruiser B30
Bar JZ Glory 313B

725K BW 96 205 DAY WT 585 DAM'S AGE 5 L. EYE 100% R. EYE 100%

CED	BW	WW	YW	SC	MM	MCE	MCW	UDR	TEAT	CW	REA	MB	BMI	CHB
4.0	0.5	56	81	0.2	24	2.3	68	1.40	1.30	58	.30	.28	461	112

725K. 1-6-2024 weight 1100; scrotal 30 cm. Dam has ratioed 105 weaning on 5 head.



Lot 60

Bar JZ Bridger 622G

{DLF,HYF,IEF,MSUDF,MDF}

Homozygous Polled 3/28/2019 P44016158

Sire: Frenzen Bar JZ Bruiser B30

Dam: Bar JZ Hope 881A ET

Lots: Two-yr-old bulls 86-88, 90, 95, 96. Bred heifers 241, 245, 246.
Bridger has good maternal lines on both sides of his pedigree. Females should offer both udder quality and milking ability. Excellent feet.

CED	BW	WW	YW	SC	MM	MCE	MCW	UDR	TEAT	CW	REA	MB	BMI	CHB
5.7	0.7	59	77	0.5	28	7.0	88	1.50	1.50	70	.56	.05	472	106



Bridger

Bar JZ Pilgrim 433F

{DLF,HYF,IEF,MSUDF}

Homozygous Polled 3/20/2018 P43906801

Sire: Churchill Pilgrim 632D ET

Dam: Bar JZ Wendy 343Y, pictured on page 3.

Lots: Two-yr-old bulls 89, 92-94.
Pilgrim 433F's dam is a matriarch in our herd, bred to deliver her 12th calf this spring. Her average birth weight on 10 calves is 77 pounds. We use Pilgrim 433F for soundness, calving ease, disposition, and longevity.

CED	BW	WW	YW	SC	MM	MCE	MCW	UDR	TEAT	CW	REA	MB	BMI	CHB
5.0	-0.8	51	83	1.0	20	1.9	79	1.40	1.60	64	.41	.08	361	108



Zilverberg

Pilgrim

POLLED HEREFORD 2-YEAR-OLD BULLS

70

Bar JZ Rimrider 511K{DLF,HYF,IEF,MSUDF,DBP}

Polled Hereford Bull 3/5/2022 P44359310

Homo Polled

NJW 139C 103C Ridge 254G NJW 73S 38W Ridge 103C ET

NJW 149Z 88X Lexy 139C ET

Bar JZ Buccaneer 210E

Bar JZ Serendipity 191F



Bar JZ Blessing 518H

511K BW 80 205 DAY WT 609 DAM'S AGE 2 L. EYE 100% R. EYE 100%

CED	BW	WW	YW	SC	MM	MCE	MCW	UDR	TEAT	CW	REA	MB	BMI	CHB
11.2	1.5	64	98	1.2	37	2.3	52	1.50	1.50	73	.60	.14	482	114

511K. 1-6-2024 weight 1618; scrotal 35.0 cm. Born unassisted from a heifer.



Bar JZ Blessing 518H, dam of Lot 70



Bar JZ Blessing 612H, dam of Lot 71

71

Bar JZ Rimrider 526K{DLF,HYF,IEF,MSUDF,MDF,DBP}

Polled Hereford Bull 3/8/2022 P44359372

Homo Polled

NJW 139C 103C Ridge 254G NJW 73S 38W Ridge 103C ET

NJW 149Z 88X Lexy 139C ET

Bar JZ Buccaneer 210E

Bar JZ Sapphire 806E



Bar JZ Blessing 612H

526K BW 80 205 DAY WT 699 DAM'S AGE 2 L. EYE 100% R. EYE 100%

CED	BW	WW	YW	SC	MM	MCE	MCW	UDR	TEAT	CW	REA	MB	BMI	CHB
8.0	1.6	64	96	1.3	37	-4.1	19	1.50	1.50	66	.24	.13	463	89

526K. 1-6-2024 weight 1560; scrotal 37.5 cm. Weaning ratio 115.



72

Bar JZ Borderline 589K{DLF,HYF,IEF,MSUDF,DBP}

Polled Hereford Bull 3/20/2022 P44360298

Homo Polled

TH Frontier 174E TH 403A 475Z Pioneer 358C ET

FTF Trusting Lady 312A

R Independence 4430

Bar JZ Virginia 407Y



Bar JZ Glory 851A

589K BW 78 205 DAY WT 578 DAM'S AGE 9 L. EYE 100% R. EYE 90%

CED	BW	WW	YW	SC	MM	MCE	MCW	UDR	TEAT	CW	REA	MB	BMI	CHB
8.9	0.3	63	95	1.1	33	0.0	100	1.40	1.40	76	.43	.13	388	128

589K. 1-6-2024 weight 1484; scrotal 37.0 cm. Dam has had 9 calves.



POLLED HEREFORD 2-YEAR-OLD BULLS

73

Bar JZ Fortytwenty 592K{DLF,HYF,IEF,MSUDF}

Polled Hereford Bull 3/21/2022 P44359304

Homo Polled

Innisfail WHR X651/723 Efbef TFL U208 Tested X651 ET
4020 ET Innisfail P230 T723



Bar JZ Virginia 500Y TH 122 711 Victor 719T
Bar JZ Kylie 425S

592K BW 84 205 DAY WT 665 DAM'S AGE 11 L. EYE 100% R. EYE 100%

CED	BW	WW	YW	SC	MM	MCE	MCW	UDR	TEAT	CW	REA	MB	BMI	CHB
3.8	1.5	66	85	0.9	28	1.4	68	1.30	1.30	63	.32	.29	397	122

592K. 1-6-2024 weight 1546; scrotal 38.0 cm. Extra muscle shape.



Lot 73

74

Bar JZ Rimrider 596K{DLF,HYF,IEF,MSUDF}

Polled Hereford Bull 3/21/2022 P44359315

Homo Polled

NJW 139C 103C Ridge 254G NJW 73S 38W Ridge 103C ET
NJW 149Z 88X Lexy 139C ET



Bar JZ Fern 531Y LCG Master One Way 51U
Bar JZ Class Act 538T

596K BW 79 205 DAY WT 630 DAM'S AGE 11 L. EYE 0 R. EYE 0

CED	BW	WW	YW	SC	MM	MCE	MCW	UDR	TEAT	CW	REA	MB	BMI	CHB
14.7	-0.5	52	84	1.1	32	4.8	55	1.50	1.60	70	.57	.03	385	102

596K. 1-6-2024 weight 1620; scrotal 36.5 cm. His dam 531Y is also the dam of our herd sire Buccaneer 210E. Heifer breeding prospect.



Lot 74



Bar JZ Fern 531Y, dam of Lot 74 & Buccaneer



Bar JZ Brynn 307G, dam of Lot 75

75

Bar JZ Fortytwenty 597K{DLF,HYF,IEF,MSUDF}

Polled Hereford Bull 3/21/2022 P44359147

Homo Polled

Innisfail WHR X651/723 Efbef TFL U208 Tested X651 ET
4020 ET Innisfail P230 T723



Bar JZ Brynn 307G Frenzen Bar JZ Bruiser B30
Bar JZ Sabrina 899A

597K BW 88 205 DAY WT 673 DAM'S AGE 3 L. EYE 100% R. EYE 100%

CED	BW	WW	YW	SC	MM	MCE	MCW	UDR	TEAT	CW	REA	MB	BMI	CHB
-0.6	3.0	74	111	1.4	27	2.6	119	1.30	1.30	74	.59	.26	459	130

597K. 1-6-2024 weight 1804; scrotal 41.0 cm. Super long and rugged.



Lot 75

Zilverberg

POLLED HEREFORD 2-YEAR-OLD BULLS

76

Bar JZ Rimrider 598K{DLF,HYF,IEF,MSUDF,DBP}

Polled Hereford Bull 3/21/2022 P443555797

Homo Polled

NJW 139C 103C Ridge 254G

NJW 73S 38W Ridge 103C ET
NJW 149Z 88X Lexy 139C ET
Churchill Pilgrim 632D ET
Bar JZ Virginia 407Y



Bar JZ Poppy 103F

598K BW 82 205 DAY WT 615 DAM'S AGE 4 L. EYE 100% R. EYE 100%

CED	BW	WW	YW	SC	MM	MCE	MCW	UDR	TEAT	CW	REA	MB	BMI	CHB
3.8	1.7	67	100	1.1	35	-1.2	65	1.30	1.40	73	.47	-.07	400	89

598K. 1-6-2024 weight 1626; scrotal 35.0 cm. Top end growth and pigment.



Lot 76

77

Bar JZ Rimrider 602K{DLF,HYF,IEF,MSUDF}

Polled Hereford Bull 3/22/2022 P44359480

Homo Polled

NJW 139C 103C Ridge 254G

NJW 73S 38W Ridge 103C ET
NJW 149Z 88X Lexy 139C ET
Bar JZ Gunner 308A
Bar JZ Fern 531Y



Bar JZ Glimmer 685D

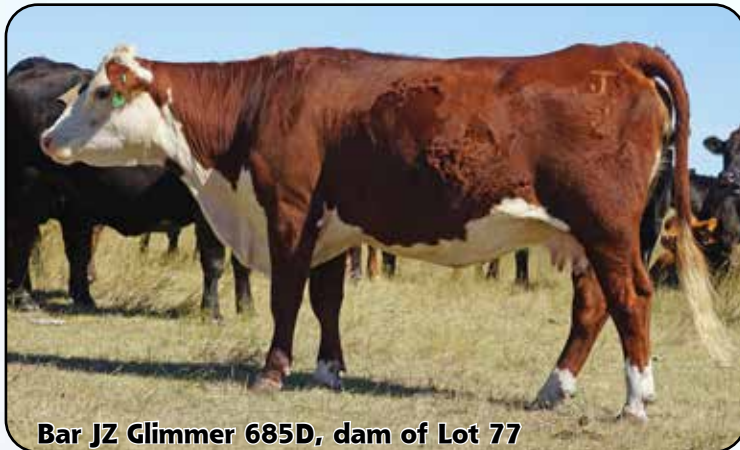
602K BW 81 205 DAY WT 550 DAM'S AGE 6 L. EYE 90% R. EYE 100%

CED	BW	WW	YW	SC	MM	MCE	MCW	UDR	TEAT	CW	REA	MB	BMI	CHB
10.0	1.5	54	88	1.1	36	7.0	61	1.30	1.40	78	.54	.17	440	125

602K. 1-6-2024 weight 1426; scrotal 35.0 cm. Heifer breeding prospect. We used this bull on our cows this summer. Dam has been a top producer, and she is a sister to Buccaneer.



Lot 77



Bar JZ Glimmer 685D, dam of Lot 77



Bar JZ Brynn 240G, dam of Lot 79

78

Bar JZ Heroic 604K{DLF,HYF,IEF,MSUDF,DBP}

Polled Hereford Bull 3/22/2022 P44359345

Homo Polled

Churchill Majestic 903G ET

Boyd 31Z Blueprint 6153
H MS 0103 Mariah 4437 ET
NJW 33TB 100W Trust 167Y
Bar JZ Corabelle 218F



Bar JZ Tequila Rose 565H

604K BW 79 205 DAY WT 577 DAM'S AGE 2 L. EYE 100% R. EYE 100%

CED	BW	WW	YW	SC	MM	MCE	MCW	UDR	TEAT	CW	REA	MB	BMI	CHB
3.4	2.2	52	84	0.4	33	-2.5	72	1.60	1.60	76	.51	.05	383	117

604K. 1-6-2024 weight 1450; scrotal 37.5 cm. Excellent udder on dam and grandam.



Zilverberg

Lot 78

POLLED HEREFORD 2-YEAR-OLD BULLS

79

Bar JZ Valiant 608K{DLF,HYF,IEF,MSUDF}

Polled Hereford Bull 3/23/2022 P44357758

Homo Polled

RV Valor 9444G ET

JDH Victor 719T 33Z ET
RV Bobbi 1404

Bar JZ Brynn 240G

Frenzen Bar JZ Bruiser B30
Bar JZ Sapphire 883E



608K BW 82 205 DAY WT 595 DAM'S AGE 3 L. EYE 100% R. EYE 100%

CED	BW	WW	YW	SC	MM	MCE	MCW	UDR	TEAT	CW	REA	MB	BMI	CHB
8.0	0.5	63	95	1.5	30	2.8	64	1.40	1.40	93	.81	.13	481	141

608K. 1-6-2024 weight 1442; scrotal 36.5 cm. We used this bull on our cows this summer. Great carcass and pigment.



Lot 79

80

Bar JZ Rimrider 610K

Polled Hereford Bull 3/23/2022 P44359319

Polled

NJW 139C 103C Ridge 254G

{MDF,DLF,IEF,HYF,MSUDF}

Bar JZ Brynn 534H

NJW 73S 38W Ridge 103C ET

NJW 149Z 88X Lexy 139C ET

Frenzen Bar JZ Bruiser B30

Bar JZ Eloquent 084F

610K BW 89 205 DAY WT 626 DAM'S AGE 2 L. EYE 100% R. EYE 100%

CED	BW	WW	YW	SC	MM	MCE	MCW	UDR	TEAT	CW	REA	MB	BMI	CHB
-4.9	3.7	68	107	0.8	38	-6.0	78	1.40	1.50	67	.28	.09	464	99

610K. 1-6-2024 weight 1698; scrotal 35.5 cm. Very docile.



Lot 80

81

Bar JZ Heroic 611K{DLF,HYF,IEF,MSUDF}

Polled Hereford Bull 3/24/2022 P44359201

Homo Polled

Churchill Majestic 903G ET

Bar JZ Brynn 366G

Boyd 31Z Blueprint 6153

H MS 0103 Mariah 4437 ET

Frenzen Bar JZ Bruiser B30

Bar JZ Glimmer 484C

611K BW 94 205 DAY WT 614 DAM'S AGE 3 L. EYE 100% R. EYE 100%

CED	BW	WW	YW	SC	MM	MCE	MCW	UDR	TEAT	CW	REA	MB	BMI	CHB
-1.0	5.1	74	108	1.2	39	-0.9	129	1.40	1.30	75	.53	-.13	421	106

611K. 1-6-2024 weight 1646; scrotal 37.0 cm. Higher growth bull for cow use.



Lot 81



Bar JZ Brynn 534H, dam of Lot 80



Bar JZ Brynn 366G, dam of Lot 81

POLLED HEREFORD 2-YEAR-OLD BULLS

82

Bar JZ Maverick 616K{DLF,HYF,IEF,MSUDF}

Polled Hereford Bull 3/25/2022 P44355806

Homo Polled

Bar JZ Buccaneer 210E

Frenzen Bar JZ Bruiser B30
Bar JZ Fern 531Y

Bar JZ Serendipity 152F

Bar JZ Surgical Strike 014D ET
Bar JZ Carlie 350S



616K BW 85 205 DAY WT 573 DAM'S AGE 5 L. EYE 100% R. EYE 100%

CED	BW	WW	YW	SC	MM	MCE	MCW	UDR	TEAT	CW	REA	MB	BMI	CHB
4.9	3.2	56	85	1.1	27	10.2	98	1.50	1.50	61	.52	.16	427	107

616K. 1-6-2024 weight 1568; scrotal 36.0 cm. Stacks of cow longevity in the pedigree.



Lot 82

83

Bar JZ Fortytwenty 657K

Polled Hereford Bull 3/28/2022 P44359308

Polled

Innisfail WHR X651/723 4020 Efb beef TFL U208 Tested X651 ET
{DLF,IEF,HYF,MSUDF,MDF} Innisfail P230 T723

Bar JZ Dolly 514H

Churchill Broadway 858F
Bar JZ Crimson 112F

657K BW 78 205 DAY WT 646 DAM'S AGE 2 L. EYE 100% R. EYE 100%

CED	BW	WW	YW	SC	MM	MCE	MCW	UDR	TEAT	CW	REA	MB	BMI	CHB
9.5	1.2	71	105	1.0	25	9.1	98	1.50	1.40	81	.39	.46	470	154

657K. 1-6-2024 weight 1544; scrotal 33.0 cm. Heifer breeding prospect.



Lot 83

84

Bar JZ Rimrider 661K{DLF,HYF,IEF,MSUDF}

Polled Hereford Bull 3/30/2022 P44359475

Homo Polled

NJW 139C 103C Ridge 254G

NJW 73S 38W Ridge 103C ET
NJW 149Z 88X Lexy 139C ET
Bar JZ Gunner 308A
Bar JZ Scarlet 544T

Bar JZ Glimmer 672D



661K BW 103 205 DAY WT 651 DAM'S AGE 6 L. EYE 10% R. EYE 100%

CED	BW	WW	YW	SC	MM	MCE	MCW	UDR	TEAT	CW	REA	MB	BMI	CHB
-3.0	5.0	64	101	1.4	40	-1.2	55	1.40	1.60	66	.51	-.08	369	83

661K. 1-6-2024 weight 1540; scrotal 37.0 cm. Dam ratios 107 weaning on 6 head.



Lot 84

85

Bar JZ Rimrider 667K{DLF,HYF,IEF,MSUDF,DBP}

Polled Hereford Bull 3/31/2022 P44355771

Homo Polled

NJW 139C 103C Ridge 254G

NJW 73S 38W Ridge 103C ET
NJW 149Z 88X Lexy 139C ET
Churchill Pilgrim 632D ET
Bar JZ Glory 596Z

Bar JZ Poppy 031F



667K BW 81 205 DAY WT 526 DAM'S AGE 4 L. EYE 100% R. EYE 100%

CED	BW	WW	YW	SC	MM	MCE	MCW	UDR	TEAT	CW	REA	MB	BMI	CHB
7.3	0.9	58	86	0.5	29	3.1	48	1.60	1.70	57	.43	.07	453	89

667K. 1-6-2024 weight 1384; scrotal 37.0 cm. Heifer breeding prospect.



Lot 85

POLLED HEREFORD 2-YEAR-OLD BULLS

86

Bar JZ Scout 672K {DLF,HYF,IEF,MSUDF}

Polled Hereford Bull 4/2/2022 P44359196

Homo Polled

Bar JZ Bridger 622G

Frenzen Bar JZ Bruiser B30

Bar JZ Hope 881A ET

Bar JZ Sleep On 738C

Bar JZ Felicity 617D ET



Bar JZ Sleepover 362G

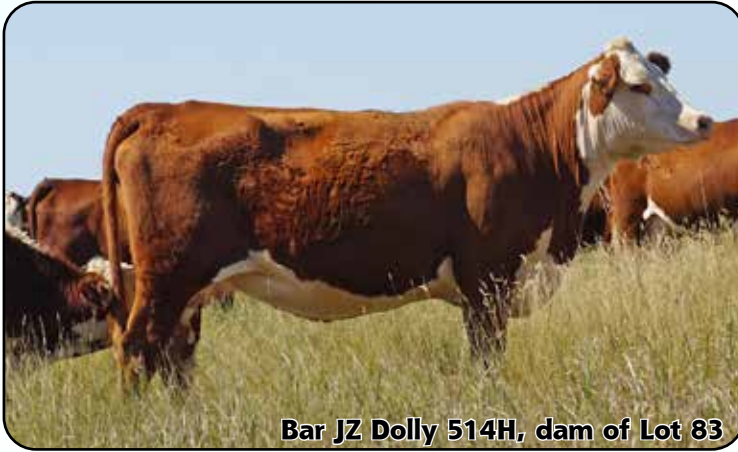
672K BW 78 205 DAY WT 651 DAM'S AGE 3 L. EYE 75% R. EYE 100%

CED	BW	WW	YW	SC	MM	MCE	MCW	UDR	TEAT	CW	REA	MB	BMI	CHB
12.8	-0.6	60	80	1.5	31	7.0	55	1.40	1.50	71	.64	.03	441	110

672K. 1-6-2024 weight 1456; scrotal 41.0 cm. Homozygous polled by pedigree. Heifer breeding prospect.



Lot 86



Bar JZ Dolly 514H, dam of Lot 83



Calving season 2023.

87

Bar JZ Scout 675K

Polled Hereford Bull 4/5/2022 P44359205

Polled

Bar JZ Bridger 622G

{DLF,IEF,HYF,MSUDF,MDF}

Bar JZ Poppy 371G

Frenzen Bar JZ Bruiser B30

Bar JZ Hope 881A ET

Churchill Pilgrim 632D ET

Bar JZ Glory 539C

675K BW 89 205 DAY WT 629 DAM'S AGE 3 L. EYE 20% R. EYE 60%

CED	BW	WW	YW	SC	MM	MCE	MCW	UDR	TEAT	CW	REA	MB	BMI	CHB
0.7	2.7	64	89	0.6	31	5.0	106	1.50	1.50	73	.45	.05	397	107

675K. 1-6-2024 weight 1498; scrotal 36.5 cm. Dam ratios 110 weaning on 3 head.



Lot 87

88

Bar JZ Scout 682K {DLF,HYF,IEF,MSUDF}

Polled Hereford Bull 4/9/2022 P44355777

Homo Polled

Bar JZ Bridger 622G

Frenzen Bar JZ Bruiser B30

Bar JZ Hope 881A ET

Mohican THM Excede Z426

Bar JZ Valerie 718D



Bar JZ Eloquent 035F

682K BW 83 205 DAY WT 514 DAM'S AGE 4 L. EYE 90% R. EYE 100%

CED	BW	WW	YW	SC	MM	MCE	MCW	UDR	TEAT	CW	REA	MB	BMI	CHB
2.2	1.5	64	97	0.4	31	3.2	100	1.40	1.50	76	.31	.04	458	119

682K. 1-6-2024 weight 1512; scrotal 36.5 cm. Very correct made.



Lot 88

POLLED HEREFORD 2-YEAR-OLD BULLS

89

Bar JZ Hiker 685K{DLF,HYF,IEF,MSUDF,DBP}

Polled Hereford Bull 4/11/2022 P44359306

Homo Polled

Bar JZ Pilgrim 433F

Churchill Pilgrim 632D ET
Bar JZ Wendy 343Y



Bar JZ Serendipity 509G

Bar JZ Surgical Strike 014D ET
Bar JZ Hope 837A ET

685K BW 61 205 DAY WT 572 DAM'S AGE 3 L. EYE 100% R. EYE 100%

CED	BW	WW	YW	SC	MM	MCE	MCW	UDR	TEAT	CW	REA	MB	BMI	CHB
13.2	-2.7	40	63	1.3	28	5.2	65	1.30	1.50	48	.14	.26	431	99

685K. 1-6-2024 weight 1340; scrotal 40.0 cm. Heifer breeding prospect.



Lot 89

90

Bar JZ Scout 688K{DLF,HYF,IEF,MSUDF}

Polled Hereford Bull 4/13/2022 P44355779

Homo Polled

Bar JZ Bridger 622G

Frenzen Bar JZ Bruiser B30
Bar JZ Hope 881A ET



Bar JZ Eloquent 043F

Mohican THM Excede Z426
Bar JZ Ivy 337C

688K BW 79 205 DAY WT 546 DAM'S AGE 4 L. EYE 15% R. EYE 100%

CED	BW	WW	YW	SC	MM	MCE	MCW	UDR	TEAT	CW	REA	MB	BMI	CHB
8.6	0.7	65	89	0.6	33	0.6	47	1.50	1.60	62	.26	-.13	463	82

688K. 1-6-2024 weight 1424; scrotal 36.0 cm. Homozygous polled by pedigree. Heifer breeding prospect.



Lot 90

91

Bar JZ Sherlock 690K{DLF,HYF,IEF,MSUDF}

Polled Hereford Bull 4/16/2022 P44355768

Homo Polled

Bar JZ Sherlock 530G

TH 49U 719T Sheyenne 3X
Bar JZ Brynn 969E



Bar JZ Corabelle 014E

Bar JZ Cornerstone 627C
Bar JZ Georgia 486C

690K BW 91 205 DAY WT 611 DAM'S AGE 5 L. EYE 100% R. EYE 100%

CED	BW	WW	YW	SC	MM	MCE	MCW	UDR	TEAT	CW	REA	MB	BMI	CHB
2.5	3.8	68	101	1.2	28	3.4	138	1.20	1.20	70	.30	.00	243	104

690K. 1-6-2024 weight 1618; scrotal 40.0 cm. Very docile.



Lot 91

92

Bar JZ Hiker 693K{DLF,HYF,IEF,MSUDF,DBP}

Polled Hereford Bull 4/16/2022 P44359293

Homo Polled

Bar JZ Pilgrim 433F

Churchill Pilgrim 632D ET
Bar JZ Wendy 343Y



Bar JZ Serendipity 446G

Bar JZ Surgical Strike 014D ET
Bar JZ Brynn 610D ET

693K BW 91 205 DAY WT 679 DAM'S AGE 3 L. EYE 100% R. EYE 100%

CED	BW	WW	YW	SC	MM	MCE	MCW	UDR	TEAT	CW	REA	MB	BMI	CHB
0.9	4.0	73	119	1.6	26	1.8	125	1.50	1.40	86	.50	.14	320	132

693K. 1-6-2024 weight 1684; scrotal 43.0 cm. Homozygous polled by pedigree. Bigger framed. 114 weaning ratio.



Lot 92

POLLED HEREFORD 2-YEAR-OLD BULLS

93

Bar JZ Hiker 694K{DLF,HYF,IEF,MSUDF,DBP}

Polled Hereford Bull 4/17/2022 P44355805

Homo Polled

Bar JZ Pilgrim 433F

Churchill Pilgrim 632D ET
Bar JZ Wendy 343Y



Bar JZ Serendipity 147F

Bar JZ Surgical Strike 014D ET
Bar JZ Hannah 087B

694K BW 78 205 DAY WT 523 DAM'S AGE 4 L. EYE 100% R. EYE 100%

CED	BW	WW	YW	SC	MM	MCE	MCW	UDR	TEAT	CW	REA	MB	BMI	CHB
4.8	0.7	55	87	1.7	23	2.7	105	1.50	1.60	65	.17	.28	361	128

694K. 1-6-2024 weight 1498; scrotal 40.5 cm. Homozygous polled by pedigree. Heifer breeding prospect.



Lot 93

94

Bar JZ Hiker 702K{DLF,HYF,IEF,MSUDF,DBP}

Polled Hereford Bull 4/27/2022 P44359349

Homo Polled

Bar JZ Pilgrim 433F

Churchill Pilgrim 632D ET
Bar JZ Wendy 343Y



Bar JZ Hannah 579D ET

NJW 73S W18 Homegrown 8YET
Bar JZ Rene 873W

702K BW 80 205 DAY WT 614 DAM'S AGE 6 L. EYE 100% R. EYE 50%

CED	BW	WW	YW	SC	MM	MCE	MCW	UDR	TEAT	CW	REA	MB	BMI	CHB
8.2	-1.2	53	78	1.5	30	1.8	85	1.20	1.30	66	.12	.08	368	101

702K. 1-6-2024 weight 1508; scrotal 39.5 cm. Homozygous polled by pedigree. Heifer breeding prospect.



Lot 94

95

Bar JZ Scout 706K{DBP}

Polled Hereford Bull 5/7/2022 P44359259

Polled

Bar JZ Bridger 622G

{DLF,IEF,HYF,MSUDF,MDF}

Frenzen Bar JZ Bruiser B30

Bar JZ Hope 881A ET

Churchill Pilgrim 632D

Bar JZ Poppy 428G

Bar JZ Glimmer 685D

706K BW 76 205 DAY WT 544 DAM'S AGE 3 L. EYE 100% R. EYE 100%

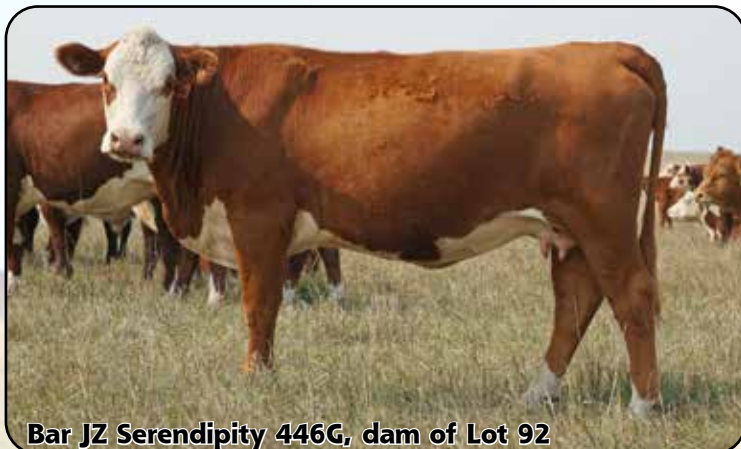
CED	BW	WW	YW	SC	MM	MCE	MCW	UDR	TEAT	CW	REA	MB	BMI	CHB
5.1	2.5	61	95	1.1	26	6.7	98	1.50	1.50	75	.55	.11	413	119

706K. 1-6-2024 weight 1460; scrotal 40.0 cm. Heifer breeding prospect.

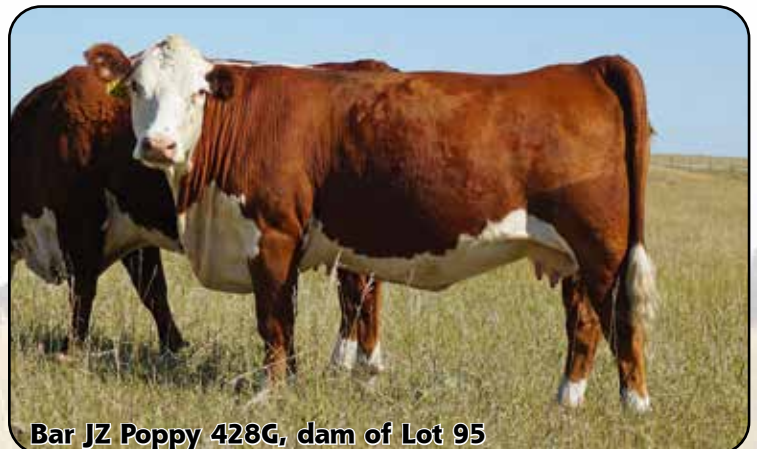


Lot 95

Lot 96 out of sale.



Bar JZ Serendipity 446G, dam of Lot 92



Bar JZ Poppy 428G, dam of Lot 95

POLLED HEREFORD 2-YEAR-OLD BULLS

97

Bar JZ Will Rogers 473J {DLF,HYF,IEF,MSUDF}

Polled Hereford Bull 8/23/2021 P44303582

Homo Polled

DM 714 8Y William 514C ET NJW 73S W18 Homegrown 8YET

DM BR Savanna 714 ET

Frenzen Bar JZ Bruiser B30

Bar JZ Glory 313B



Bar JZ Brynn 019E

473J BW 95 205 DAY WT 690 DAM'S AGE 5 L. EYE 0 R. EYE 40%

CED	BW	WW	YW	SC	MM	MCE	MCW	UDR	TEAT	CW	REA	MB	BMI	CHB
1.1	1.7	67	101	1.1	38	1.1	98	1.40	1.40	85	.57	.18	434	144

473J. 1-6-2024 weight 1852; scrotal 42.5 cm.



Churchill Majestic 903G ET

{DLF,HYF,IEF,MSUDF,MDF}

Homozygous Polled 1/04/2019 P44044136

Sire: Boyd 31Z Blueprint 6153

Dam: H MS 0103Mariah 4437 ET

Lots: Two-yr-old bulls 78, 81. Bred heifers 202, 218, 235.

We used **Majestic** for calving ease breeding heifers. His progeny are known for balance and style. Majestic has been one of the most popular sires at Churchill Cattle.

CED	BW	WW	YW	SC	MM	MCE	MCW	UDR	TEAT	CW	REA	MB	BMI	CHB
7.3	2.5	69	100	1.2	33	-0.3	95	1.70	1.60	83	.65	.10	495	127



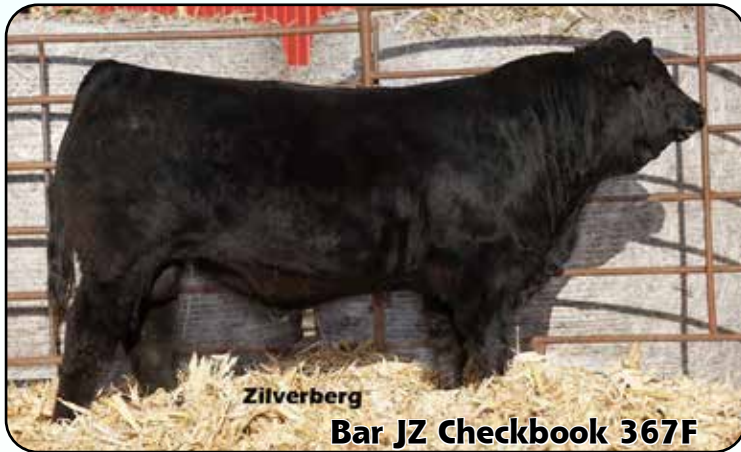
Complete Dispersion Hereford Fall Calving Herd by Private Treaty

30 Mature Cows • 5 Bred Heifers
20 Open Heifer Calves

Call us for details



LIMOUSIN & LIMFLEX REFERENCE SIRES



Limousin & LimFlex EPDS in this catalog current as of January 2024.

Non-Parent **January 2024 Breed Average EPDs**

CED	BW	WW	YW	M	TM	CEM	SC	DOC	YG	CW	REA	MB	FT	\$MTI
12	-0.2	59	88	23	52	8	0.8	12	-15	37	.72	.31	-0.2	60

In our catalog EPDs highlighted in blue are in the upper 15% of the breed for that specific trait.

Homo Polled Lots			Homo Black Lots		Homo Polled + Homo Blk Lots	
101	118	137	101	121	101	122
102	119	138	102	122	102	123
103	122	139	103	123	103	124
104	123		105	124	104	126
105	124		107	126	105	128
106	125		109	128	107	130
107	126		111	130	111	131
110	127		112	131	112	134
111	128		113	134	113	138
112	129		114	138	114	139
113	131		115	139	115	
114	132		116		116	
115	134		117		117	
116	135		118		118	
117	136		119		119	



Animals registered as **Lim-Flex®** must be 25 to 75 percent

Limousin and 25 to 75 percent Angus or Red Angus, with a maximum allowance of another breed or unknown breed composition of 12.5 percent (1/8th). Use Lim-Flex® bulls to simplify your crossbreeding system and harvest those extra pounds. Not only do Lim-Flex® bulls provide heterosis, Lim-Flex® females make excellent mother cows. With **Lim-Flex®**, breeders can offer a just-right shot of Limousin to meet the needs of most any crossbreeding program.



Bar JZ Ranches participates in the Limousin Inventory Management System. This means that we maintain our cow herd inventory with NALF. For each cow in our herd we must have a calf on record, reason for no progeny recorded,

or reason for disposal. Complete herd information contributes to more accurate data and EPDs.

LIMOUSIN & LIMFLEX YEARLING BULLS

101

Bar JZ Brickyard 752L

30% Limousin Bull 3/5/2023 LFM2602192

Homo Polled

S S Brickyard

S S Niagara Z29
Lucy S S C109

Homo Black

Bar JZ Accent 885J

AHCC Acclaim 209G
Bar JZ Harmony 412Y

752L BW 68 205 DAY WT 639 DAM'S AGE 2 Homo Pld Homo Blk

CED	BW	WW	YW	MK	TM	CEM	SC	DOC	YG	CW	REA	MB	FT	\$MTI
16	-3.0	77	137	36	75	10	n/a	13	-.09	59	.85	.52	-.01	73

752L. 3/4 brother to Lot 102. Acclaim 209G, his maternal grandsire, is a Trait Leader for WW, YW, TM, CW. Heifer breeding prospect.



Lot 101

102

Bar JZ Brickyard 755L

25% Limousin Bull 3/7/2023 LFM2602203

Homo Polled

S S Brickyard

S S Niagara Z29
Lucy S S C109

Homo Black

Bar JZ Accent 966J

AHCC Acclaim 209G
Bar JZ Blackbird 796E

755L BW 66 205 DAY WT 634 DAM'S AGE 2 Homo Pld Homo Blk

CED	BW	WW	YW	MK	TM	CEM	SC	DOC	YG	CW	REA	MB	FT	\$MTI
17	-3.5	80	146	34	75	12	n/a	14	-.05	67	.87	.59	.00	77

755L. 3/4 brother to Lot 101. Acclaim 209G, his maternal grandsire, is a Trait Leader for WW, YW, TM, CW. Heifer breeding prospect.



Lot 102

103

Bar JZ Brickyard 760L

31% Limousin Bull 3/8/2023 LFM2602188

Homo Polled

S S Brickyard

S S Niagara Z29
Lucy S S C109

Homo Black

Bar JZ Easy Ella 857J*
Trait Leader for CEM

AHCC Easy Rider 5594E
Bar JZ Timely 772E

760L BW 78 205 DAY WT 666 DAM'S AGE 2 Homo Pld Homo Blk

CED	BW	WW	YW	MK	TM	CEM	SC	DOC	YG	CW	REA	MB	FT	\$MTI
18	-3.6	80	136	34	75	12	n/a	14	-.11	48	.85	.63	.00	78

760L. 3/4 brother to Lot 104. Easy Rider 5594E, his maternal grandsire, is a Trait Leader for WW, TM, CEM, MB, \$MTI. Heifer breeding prospect.



Lot 103

Zilverberg

104

Bar JZ Brickyard 765L

23% Limousin Bull 3/11/2023 NXM2602198

Homo Polled

S S Brickyard

S S Niagara Z29
Lucy S S C109

Homo Black

Bar JZ Easy Ella 930J*
Trait Leader for CEM

AHCC Easy Rider 5594E
Bar JZ Countess 244W

765L BW 78 205 DAY WT 684 DAM'S AGE 2 Homo Pld Homo Blk

CED	BW	WW	YW	MK	TM	CEM	SC	DOC	YG	CW	REA	MB	FT	\$MTI
18	-2.9	85	147	37	80	13	n/a	12	-.02	54	.79	.69	.02	81

765L. 3/4 brother to Lot 103. Easy Rider 5594E, his maternal grandsire, is a Trait Leader for WW, TM, CEM, MB, \$MTI. Heifer breeding prospect.



Lot 104

LIMOUSIN & LIMFLEX YEARLING BULLS

105

Bar JZ Brickyard 774L

39% Limousin Bull 3/12/2023 LFM2602201

Homo Polled

S S Brickyard

S S Niagara Z29
Lucy S S C109

Homo Black

Bar JZ Aptitude 958J

Wulfs Apostle T343A
Bar JZ Stephanie 980A

774L BW 72 205 DAY WT 670 DAM'S AGE 2 Homo Pld Homo Blk

CED	BW	WW	YW	MK	TM	CEM	SC	DOC	YG	CW	REA	MB	FT	\$MTI
15	-2.2	79	131	36	76	9	n/a	11	-.21	48	1.04	.41	-.01	71

774L. Wulfs Apostle, his maternal grandsire, is a Trait Leader for Milk, REA. Heifer breeding prospect.



106

Bar JZ Archway 788L

37% Limousin Bull 3/15/2023 LFM2602143

Homo Polled

S Architect 9501

Syden Blueprint
S Blossom 7514

Black

Bar JZ Tena 481C

Wulfs Zero Turn X292Z
Bar JZ Countess 902W

788L BW 79 205 DAY WT 683 DAM'S AGE 8 Homo Pld Black

CED	BW	WW	YW	MK	TM	CEM	SC	DOC	YG	CW	REA	MB	FT	\$MTI
11	-1.1	84	126	30	72	4	n/a	6	-.06	47	.56	.35	-.02	69

788L. His dam, 481C, has an average weaning ratio of 105 on 7 calves and is the dam of our herd sire Bar JZ Checkbook 367F. She maintains a tight udder and small teats.



107

Bar JZ Empire 791L

52% Limousin Bull 3/16/2023 LFM2602177

Homo Polled

TNGC Empire 736E

TMCK Cash Flow 247C
MAGS Beth ET

Homo Black

Bar JZ Ava 790E

MAGS Aviator
Bar JZ Erica 463C

791L BW 75 205 DAY WT 570 DAM'S AGE 6 Homo Pld Homo Blk

CED	BW	WW	YW	MK	TM	CEM	SC	DOC	YG	CW	REA	MB	FT	\$MTI
14	-0.3	74	128	26	63	9	.85	20	.10	44	.33	.45	.03	68

791L. His sire, Empire 736E, is a Trait Leader for WW, YW, TM, DOC.



108

Bar JZ Justified 795L

50% Limousin Bull 3/18/2023 LFM2602087

Scurs

KG Justified 3023

Connealy Judgment
KG Miss Magic 1443

Het Black

Bar JZ Chelsea 064F

LFLC Checking Account 701C
Bar JZ Rapunzel 981W

795L BW 75 205 DAY WT 589 DAM'S AGE 5 Scurs Het Blk

CED	BW	WW	YW	MK	TM	CEM	SC	DOC	YG	CW	REA	MB	FT	\$MTI
15	-2.4	69	110	25	60	8	.75	13	-.15	32	.56	.30	-.03	63

795L. Heifer breeding prospect.



LIMOUSIN & LIMFLEX YEARLING BULLS

109

Bar JZ Earnest 797L

67% Limousin Bull 3/19/2023 LFM2602200

Scurs

Bar JZ Earnest 411J

AHCC Earning Power 214G
Bar JZ Future Level 263X
LFLC Checking Account 701C
Bar JZ Roxie 848A

Homo Black

Bar JZ Chelsea 952J

797L BW 82 205 DAY WT 671 DAM'S AGE 2 Scurs Homo Blk

CED	BW	WW	YW	MK	TM	CEM	SC	DOC	YG	CW	REA	MB	FT	\$MTI
15	0.6	68	106	31	65	11	1.18	13	-.26	30	.84	.14	-.03	58

797L. A big weaning weight for a first calf heifer.



110

Bar JZ Archway 800L

50% Limousin Bull 3/20/2023 LFM2602180

Homo Polled

S Architect 9501

Sydden Blueprint
S Blossom 7514
Wulfs Xcellsior X252X
Bar JZ Ursula 107B

Black

Bar JZ Celine 817E

800L BW 83 205 DAY WT 655 DAM'S AGE 6 Homo Pld Black

CED	BW	WW	YW	MK	TM	CEM	SC	DOC	YG	CW	REA	MB	FT	\$MTI
10	-0.6	86	136	25	69	2	n/a	15	-.19	45	.88	.30	-.02	69

800L. His dam 817E has an average weaning ratio of 100 on 5 calves; a tight udder and very small teats.



111

Bar JZ Cable 801L

62% Limousin Bull 3/20/2023 LFM2602142

Homo Polled

MAGS Cable

MAGS Appleseed
MAGS Zequin
DLVL Xerox 023X
Bar JZ Countess 116X

Homo Black

Bar JZ Sky 472C

801L BW 90 205 DAY WT 619 DAM'S AGE 8 Homo Pld Homo Blk

CED	BW	WW	YW	MK	TM	CEM	SC	DOC	YG	CW	REA	MB	FT	\$MTI
14	1.8	71	111	29	64	9	1.05	16	-.15	32	.51	.35	-.03	66

801L. At 8 years of age, his dam 472C has a very tight udder and very small teats. MAGS Cable is a Trait Leader for TM, MB & \$MTI.



112

Bar JZ Cable 802L

55% Limousin Bull 3/20/2023 LFM2602148

Homo Polled

MAGS Cable

MAGS Appleseed
MAGS Zequin
Bar JZ Paladin 137D
Bar JZ Heart Throb 591D

Homo Black

Bar JZ Pippa 546H

802L BW 92 205 DAY WT 669 DAM'S AGE 3 Homo Pld Homo Blk

CED	BW	WW	YW	MK	TM	CEM	SC	DOC	YG	CW	REA	MB	FT	\$MTI
13	2.1	80	125	30	69	6	1.12	15	-.12	42	.66	.36	-.02	68

802L. MAGS Cable is a Trait Leader for TM, MB & \$MTI.



LIMOUSIN & LIMFLEX YEARLING BULLS

113

Bar JZ Brickyard 804L

50% Limousin Bull 3/20/2023 LFM2602084

Homo Polled

S S Brickyard

S S Niagara Z29
Lucy S S C109

Homo Black

Bar JZ Charlotte 005J

Bar JZ Checkbook 367F
Bar JZ Winter 401C

804L BW 83 205 DAY WT 586 DAM'S AGE 2 Homo Pld Homo Blk

CED	BW	WW	YW	MK	TM	CEM	SC	DOC	YG	CW	REA	MB	FT	\$MTI
8	-1.0	79	129	33	72	2	n/a	9	-19	49	.84	.39	-.03	70



114

Bar JZ Cable 805L

53% Limousin Bull 3/21/2023 LFM2602208

Homo Polled

MAGS Cable

MAGS Appleseed
MAGS Zequin
LVLS You Da Man 887Y
Bar JZ Stephanie 570Z

Homo Black

Bar JZ Erica 388C

805L BW 85 205 DAY WT 616 DAM'S AGE 8 Homo Pld Homo Blk

CED	BW	WW	YW	MK	TM	CEM	SC	DOC	YG	CW	REA	MB	FT	\$MTI
13	2.1	80	125	30	69	6	1.12	15	-.12	42	.66	.36	-.02	68

805L. Twin. MAGS Cable is a Trait Leader for TM, MB & \$MTI. Raised on foster dam.



115

Bar JZ Cable 806L

53% Limousin Bull 3/21/2023 LFM2602114

Homo Polled

MAGS Cable

MAGS Appleseed
MAGS Zequin
LVLS You Da Man 887Y
Bar JZ Stephanie 570Z

Homo Black

Bar JZ Erica 388C

806L BW 82 205 DAY WT 647 DAM'S AGE 8 Homo Pld Homo Blk

CED	BW	WW	YW	MK	TM	CEM	SC	DOC	YG	CW	REA	MB	FT	\$MTI
14	1.5	77	118	30	69	7	1.50	14	-.12	41	.63	.34	-.02	67

806L. Twin. MAGS Cable is a Trait Leader for TM, MB & \$MTI.



116

Bar JZ Easy Rider 807L

59% Limousin Bull 3/24/2023 LFM2602088

Homo Polled

AHCC Easy Rider 5594E

ELMW Alfalfa 103B
AHCC Miss Y Axis C5594 ET
MAGS Aviator
Bar JZ Wendy 363Y

Homo Black

Bar JZ Ava 065F

807L BW 90 205 DAY WT 680 DAM'S AGE 5 Homo Pld Homo Blk

CED	BW	WW	YW	MK	TM	CEM	SC	DOC	YG	CW	REA	MB	FT	\$MTI
13	-0.6	75	118	30	67	9	.65	14	-.12	28	.74	.38	.02	68

807L. Easy Rider 5594E is a Trait Leader for WW, TM, CEM, MB, \$MTI.



LIMOUSIN & LIMFLEX YEARLING BULLS

117

Bar JZ Cable 808L

46% Limousin Bull 3/24/2023 LFM2602117

Homo Polled

MAGS Cable

MAGS Appleseed
MAGS Zequin

Homo Black

Bar JZ Olivia 404C

LVLS Optimizer 859X
Bar JZ Countess 091X

808L BW 94 205 DAY WT 685 DAM'S AGE 8 Homo Pld Homo Blk

CED	BW	WW	YW	MK	TM	CEM	SC	DOC	YG	CW	REA	MB	FT	\$MTI
13	1.6	74	121	29	66	12	1.10	16	-.09	42	.69	.47	.00	70

808L. MAGS Cable is a Trait Leader for TM, MB & \$MTI. Olivia 404C has an average weaning ratio of 101 on 7 calves.



118

Bar JZ Reserve 809L

65% Limousin Bull 3/25/2023 LFM2602158

Homo Polled

MAGS Federal Reserve ET

MAGS Cable
CJSL 4357B ET
Bar JZ Checkbook 367F
Bar JZ Sky 472C

Homo Black

Bar JZ Charlotte 601H

809L BW 72 205 DAY WT 643 DAM'S AGE 3 Homo Pld Homo Blk

CED	BW	WW	YW	MK	TM	CEM	SC	DOC	YG	CW	REA	MB	FT	\$MTI
14	-0.2	70	102	30	64	11	1.05	11	-.12	28	.41	.37	-.03	65

809L. Federal Reserve is a Trait Leader for CEM, MB, \$MTI.



119

Bar JZ Dauntless 810L

78% Limousin Bull 3/25/2023 NXM2602145

Homo Polled

CJSL Dauntless 6257D ET

MAGS Zodiac
LLJB Absolute Style 3056A
WZRK Titus Temptation
Bar JZ Rapunzel 296X

Homo Black

Bar JZ Tabitha 510C

810L BW 92 205 DAY WT 603 DAM'S AGE 8 Homo Pld Homo Blk

CED	BW	WW	YW	MK	TM	CEM	SC	DOC	YG	CW	REA	MB	FT	\$MTI
9	1.1	61	95	22	52	4	.35	17	-.15	24	.44	.21	-.03	57

810L. 3/4 brother to Lot 121.



120

Bar JZ Earnest 811L

81% Limousin Bull 3/26/2023 NXM2602190

Het Polled

Bar JZ Earnest 411J

AHCC Earning Power 214G
Bar JZ Future Level 263X
Wulfs Amazing Bull T341A
Bar JZ Sky 393C

Black

Bar JZ Amanda 871J

811L BW 81 205 DAY WT 634 DAM'S AGE 2 Het Pld Black

CED	BW	WW	YW	MK	TM	CEM	SC	DOC	YG	CW	REA	MB	FT	\$MTI
15	-0.4	62	101	32	63	10	1.27	17	-.33	26	.83	.11	-.06	56

811L. Heifer breeding prospect.



LIMOUSIN & LIMFLEX YEARLING BULLS

121

Bar JZ Dauntless 812L

78% Limousin Bull 3/26/2023 NXM2602101

Scurs

CJSL Dauntless 6257D ET

MAGS Zodiac
LLJB Absolute Style 3056A
WZRK Titus Temptation
Bar JZ Harmony 348S

Homo Black

Bar JZ Tabitha 258B

812L BW 100 205 DAY WT 643 DAM'S AGE 9 Scurs Homo Blk

CED	BW	WW	YW	MK	TM	CEM	SC	DOC	YG	CW	REA	MB	FT	\$MTI
10	1.4	64	101	23	55	6	.30	17	-.13	22	.47	.23	-.01	59

812L. 3/4 brother to Lot 119.



Lot 121

122

Bar JZ Archway 813L

41% Limousin Bull 3/26/2023 LFM2602090

Homo Polled

S Architect 9501

Syden Blueprint
S Blossom 7514
Wulfs Billy the Kid K234B
Bar JZ Stephanie 940A

Homo Black

Bar JZ Billie Jo 098F

813L BW 95 205 DAY WT 638 DAM'S AGE 5 Homo Pld Homo Blk

CED	BW	WW	YW	MK	TM	CEM	SC	DOC	YG	CW	REA	MB	FT	\$MTI
11	1.8	93	146	24	70	8	n/a	13	-.06	61	.75	.36	-.01	72

813L. Maternal half brother to Lot 137.



Lot 122

123

Bar JZ Cable 814L

54% Limousin Bull 3/27/2023 LFM2602167

Homo Polled

MAGS Cable

MAGS Appleseed
MAGS Zequin
TMCK Architect 031A
Bar JZ Rapunzel 304X

Homo Black

Bar JZ La Veda 701D

814L BW 81 205 DAY WT 594 DAM'S AGE 7 Homo Pld Homo Blk

CED	BW	WW	YW	MK	TM	CEM	SC	DOC	YG	CW	REA	MB	FT	\$MTI
15	-1.0	67	104	28	62	11	.95	16	-.08	34	.54	.37	.00	64

814L. MAGS Cable is a Trait Leader for TM, MB & \$MTI. Heifer breeding prospect.



Lot 123

124

Bar JZ Braveheart 815L

75% Limousin Bull 3/27/2023 LFM2602174

Homo Polled

LVLS Braveheart 9098B

MAGS Y-Axis
LVLS Without U 9098W
WZRK Titus Temptation
Bar JZ Wendy 349Y

Homo Black

Bar JZ Tabitha 741D

815L BW 84 205 DAY WT 613 DAM'S AGE 7 Homo Pld Homo Blk

CED	BW	WW	YW	MK	TM	CEM	SC	DOC	YG	CW	REA	MB	FT	\$MTI
13	-0.3	58	88	25	54	8	.70	15	-.34	30	.96	.12	-.05	55

815L. Braveheart 9098B sired many productive females for us.



Lot 124

LIMOUSIN & LIMFLEX YEARLING BULLS

125

Bar JZ Braveheart 819L

75% Limousin Bull 3/20/2023 LFM2602094

Homo Polled

LVLS Braveheart 9098B

MAGS Y-Axis
LVLS Without U 9098W
Wulfs Amazing Bull T341A
Bar JZ Danielle 512Y

Black

Bar JZ Amanda 145F

819L BW 74 205 DAY WT 612 DAM'S AGE 5 Homo Pld Black

CED	BW	WW	YW	MK	TM	CEM	SC	DOC	YG	CW	REA	MB	FT	\$MTI
14	-0.9	56	83	30	58	8	1.15	15	-0.38	19	.90	.02	-0.05	51

819L. Braveheart 9098B sired many productive females for us. Heifer breeding prospect.



126

Bar JZ Yellowstone 826L

89% Limousin Bull 4/3/2023 NPM2602097

Homo Polled

JBV Yellowstone 901G

AHCC Earning Power 900E ET
JBV Girl Crush 422B
Bar JZ Paladin 137D
Bar JZ Tabitha 485C

Homo Black

Bar JZ Pippa 169F

826L BW 81 205 DAY WT 663 DAM'S AGE 5 Homo Pld Homo Blk

CED	BW	WW	YW	MK	TM	CEM	SC	DOC	YG	CW	REA	MB	FT	\$MTI
8	1.1	70	116	28	63	3	1.60	14	-0.43	38	1.14	.09	-0.07	58

826L. Big scrotal EPD.



127

Bar JZ Checkbook Too 827L

93% Limousin Bull 4/4/2023 NPM2602164

Homo Polled

Bar JZ Checkbook 367F

LFLC Checking Account 701C
Bar JZ Tena 481C
Wulfs Amazing Bull T341A
Bar JZ Sky 393C

Black

Bar JZ Amanda 678H

827L BW 89 205 DAY WT 664 DAM'S AGE 3 Homo Pld Black

CED	BW	WW	YW	MK	TM	CEM	SC	DOC	YG	CW	REA	MB	FT	\$MTI
10	1.3	74	103	32	68	4	.80	9	-0.51	16	.91	-0.14	-0.10	51



128

Bar JZ Checkbook Too 828L

73% Limousin Bull 4/5/2023 LFM2602176

Homo Polled

Bar JZ Checkbook 367F

LFLC Checking Account 701C
Bar JZ Tena 481C
MAGS Aviator
Bar JZ Joyce 409C

Homo Black

Bar JZ Ava 766E*
Trait Leader CEM

828L BW 80 205 DAY WT 648 DAM'S AGE 5 Homo Pld Homo Blk

CED	BW	WW	YW	MK	TM	CEM	SC	DOC	YG	CW	REA	MB	FT	\$MTI
14	-1.5	66	96	30	63	8	.20	6	-0.23	22	.61	.08	-0.04	55

828L. Heifer breeding prospect.



LIMOUSIN & LIMFLEX YEARLING BULLS

129

Bar JZ Checkbook Too 833L

74% Limousin Bull 4/10/2023 LFM2602108

Homo Polled

Bar JZ Checkbook 367F

LFLC Checking Account 701C
Bar JZ Tena 481C

Het Black

Bar JZ La Veda 301G

TMCK Architect 031A
Bar JZ Tabitha 713Z

833L BW 94 205 DAY WT 689 DAM'S AGE 4 Homo Pld Het Blk

CED	BW	WW	YW	MK	TM	CEM	SC	DOC	YG	CW	REA	MB	FT	\$MTI
10	1.5	79	112	29	68	4	.45	7	-.27	29	.74	.08	-.05	59



130

Bar JZ Checkbook Too 834L

71% Limousin Bull 4/11/2023 LFM2602172

Homo Polled

Bar JZ Checkbook 367F

LFLC Checking Account 701C
Bar JZ Tena 481C

Homo Black

Bar JZ Zeldia 730H*
Trait Leader CEM

Bar JZ Zenith 201E
Bar JZ La Veda 939E

834L BW 80 205 DAY WT 697 DAM'S AGE 3 Homo Pld Homo Blk

CED	BW	WW	YW	MK	TM	CEM	SC	DOC	YG	CW	REA	MB	FT	\$MTI
14	0.8	78	113	30	68	8	.55	7	-.31	24	.72	.09	-.06	59



131

Bar JZ Checkbook Too 835L

66% Limousin Bull 4/11/2023 LFM2602171

Homo Polled

Bar JZ Checkbook 367F

LFLC Checking Account 701C
Bar JZ Tena 481C

Homo Black

Bar JZ Claire 725H

CJSL Creed 5042C
Bar JZ Countess 244W

835L BW 83 205 DAY WT 624 DAM'S AGE 3 Homo Pld Homo Blk

CED	BW	WW	YW	MK	TM	CEM	SC	DOC	YG	CW	REA	MB	FT	\$MTI
13	0.2	68	100	29	63	9	.55	6	-.21	20	.59	.28	-.03	63



132

Bar JZ Checkbook Too 837L

70% Limousin Bull 4/14/2023 LFM2602103

Homo Polled

Bar JZ Checkbook 367F

LFLC Checking Account 701C
Bar JZ Tena 481C

Het Black

Bar JZ La Veda 286G

TMCK Architect 031A
Bar JZ Heart Throb 650D

837L BW 93 205 DAY WT 748 DAM'S AGE 4 Homo Pld Het Blk

CED	BW	WW	YW	MK	TM	CEM	SC	DOC	YG	CW	REA	MB	FT	\$MTI
9	2.8	83	114	32	73	3	.65	4	-.31	25	.79	.04	-.05	59

837L 286G has a weaning ratio of 116 on 3 calves.



Lot 133 out of sale.

LIMOUSIN & LIMFLEX BULLS

134

Bar JZ Checkbook Too 840L

81% Limousin Bull 4/27/2023 NXM2602162

Homo Polled

Bar JZ Checkbook 367F

LFLC Checking Account 701C
Bar JZ Tena 481C

Homo Black

Bar JZ Greta 651D

SYES Agronomy 262A
Bar JZ Future Level 499T

840L BW 96 205 DAY WT 672 DAM'S AGE 7 Homo Pld Homo Blk

CED	BW	WW	YW	MK	TM	CEM	SC	DOC	YG	CW	REA	MB	FT	\$MTI
10	2.4	68	92	29	63	6	.55	-1	-.41	12	.74	.07	-.07	56



Lot 134

135

Bar JZ Cable 540K

55% Limousin Bull 3/11/2022 LFM2508551

Homo Polled

MAGS Cable

MAGS Appleseed
MAGS Zequin

Het Black

Bar JZ Joyce 334C

TMCK Alfalfa 35X
Bar JZ Tabitha 878A

540K BW 82 205 DAY WT 730 DAM'S AGE 7 Homo Pld Het Blk

CED	BW	WW	YW	MK	TM	CEM	SC	DOC	YG	CW	REA	MB	FT	\$MTI
14	-0.6	73	109	35	71	10	1.00	10	-.19	30	.78	.40	-.01	68

540K. 334C has an average weaning ratio of 107 on 7 calves. MAGS Cable is a Trait Leader for TM, MB & \$MTI.



Lot 135

136

Bar JZ Empire 587K

60% Limousin Bull 3/20/2022 LFM2508631

Homo Polled

TNGC Empire 736E

TMCK Cash Flow 247C
MAGS Beth ET

Black

Bar JZ Tabitha 878A

WZRK Titus Temptation
Bar JZ Emilia 529T

587K BW 86 205 DAY WT 695 DAM'S AGE 9 Homo Pld Black

CED	BW	WW	YW	MK	TM	CEM	SC	DOC	YG	CW	REA	MB	FT	\$MTI
10	0.1	73	119	32	69	4	1.20	17	-.04	39	.46	.29	-.01	63

587K. His sire, Empire 736E, is a Trait Leader for WW, YW, TM, DOC. 878A was a matriarch in our herd with an average weaning ratio of 106 on 8 calves. 1-6-2024 weight 1638; scrotal 39.0 cm.



Lot 136

137

Bar JZ Earnest 681K

78% Limousin Bull 4/7/2022 NXM2495010

Homo Polled

AHCC Earning Power 214G

AHCC Earning Power 900E ET
AHCC Miss Unheardof Z214

Het Black

Bar JZ Billie Jo 098F

Wulfs Billy the Kid K234B
Bar JZ Stephanie 940A

691K BW 93 205 DAY WT 654 DAM'S AGE 4 Homo Pld Het Black

CED	BW	WW	YW	MK	TM	CEM	SC	DOC	YG	CW	REA	MB	FT	\$MTI
12	2.4	71	119	27	63	10	1.30	15	-.23	44	.79	.26	-.05	63

681K. Maternal half brother to Lot 122. A proven breeder used in our herd this past summer.

1-6-2024 weight 1674; scrotal 36.0 cm.



Lot 137

LIMOUSIN & LIMFLEX 2-YEAR-OLD BULLS

138

Bar JZ Earnest 707K

76% Limousin Bull 4/7/2022 NXM2508619

Homo Polled
Homo Black

AHCC Earning Power 214G

AHCC Earning Power 900E ET
AHCC Miss Unheardof Z214
SYES Backstage 466B
Bar JZ Erica 388C

Bar JZ Bailey 779E

707K BW 80 205 DAY WT 648 DAM'S AGE 4 Homo Pld Homo Black

CED	BW	WW	YW	MK	TM	CEM	SC	DOC	YG	CW	REA	MB	FT	\$MTI
16	-1.1	60	104	32	62	10	1.30	15	-.23	31	.70	.19	-.04	57

707K, 779E has an average weaning ratio of 105 on 5 calves. A proven breeder used in our herd this past summer. Heifer breeding prospect. 1-6-2024 weight 1734; scrotal 44.0 cm.



139

TR Storm 2170K

Angus Bull 3/22/2022 AAA20513621

Homo Polled
Homo Black

KR Storm 900

KR Rally
GS Identity 42
S A V Final Answer 0035
TR MS Erica 1093Y

TR MS Erica 4056B

2170K BW 89 205 DAY WT 675 DAM'S AGE Homo Pld Homo Black

CED	BW	WW	YW	MK	TM	CEM	SC	DOC	YG	CW	REA	MB	FT	\$MTI
-4	4.8	92	154	14		2	1.42	18		67	.55	.47	.024	

2170K EPDs from Angus Association. We purchased him at the Thomas Ranch sale to use on our LimFlex cows. He ranks in the top 1% for weaning weight and top 3% for yearling weight. 1-6-2024 weight 1890; scrotal 45.0 cm.



Zilverberg Family 2023

Avila Grace
Born 4.6.23

Solanus, age 3,
future rancher

Caroline, 9. Lydia, 12

Grateful for family.

POLLED HEREFORD BRED HEIFERS

Bar JZ On Demand (619K)

{DLF,HYF,IEF,MSUDF}

Homozygous Polled 3/26/2022 P44355795
 Sire: RV Valor 9444G ET
 Dam: Bar JZ Hannah 087B

On Demand was the high seller in our 2023 sale going to Genex and Hoffman Herefords, Nebraska. Cattlemen across the country recognized On Demand's strong combination of phenotype, curve bending EPDs, and a lineage of productive cows. His dam will have her 9th calf this spring. These bred heifers are your chance to own his first calf crop!

CED	BW	WW	YW	SC	MM	MCE	MCW	UDR	TEAT	CW	REA	MB	BMI	CHB
12.0	0.4	64	102	1.4	30	2.5	92	1.50	1.50	92	.57	.24	434	157



201 Bar JZ Vivian 055K

Polled Hereford Cow 2/27/2022 P44359494

RV Valor 9444G ET JDH Victor 719T 33Z ET
 RV Bobbi 1404
 Bar JZ Carefree 732H Frenzen Freebird F53
 Bar JZ Crimson 115F

CED	BW	WW	YW	SC	MM	MCE	MCW	UDR	TEAT	CW	REA	MB	BMI	CHB
2.8	0.2	60	93	1.3	25	-7.1	87	1.60	1.70	80	.49	.16	443	132

055K. Safe to Bar JZ Broadgauge 184H on 4/15/2024.



202 Bar JZ Mariah 056K

Polled Hereford Cow 2/28/2022 P44359440

Churchill Majestic 903G ET Boyd 31Z Blueprint 6153
 H MS 0103 Mariah 4437 ET
 Bar JZ Brynn 645H Frenzen Bar JZ Bruiser B30
 Bar JZ Topaz 900E

CED	BW	WW	YW	SC	MM	MCE	MCW	UDR	TEAT	CW	REA	MB	BMI	CHB
5.1	2.8	72	103	1.1	34	2.9	87	1.60	1.50	87	.76	.05	473	125

056K. Safe to Bar JZ On Demand on 3/30/2024.



203 Bar JZ Blessing 057K

Polled Hereford Cow 2/28/2022 P44359399

Bar JZ Buccaneer 210E Frenzen Bar JZ Bruiser B30
 Bar JZ Fern 531Y
 Bar JZ Tequila Rose 639H NJW 33TB 100W Trust 167Y
 Bar JZ Heartstrings 901E

CED	BW	WW	YW	SC	MM	MCE	MCW	UDR	TEAT	CW	REA	MB	BMI	CHB
14.7	0.1	59	95	1.4	32	10.8	70	1.50	1.60	79	.68	.19	408	129

057K. Safe to Bar JZ On Demand on 3/30/2024.



POLLED HEREFORD BRED HEIFERS

NJW 119E 87G Endorsement 216J

{DLF,HYF,IEF,MSUDF,MDF,DBF}

Homozygous Polled 3/26/2022 P44355795
 Sire: NJW 133A 6589 Manifest 87G ET
 Dam: NJW 8B 164C Lexy 119E

Endorsement is a complete sire whose solid data across the board has a distinct focus – to make the best Hereford cows possible. His service sells.

CED	BW	WW	YW	SC	MM	MCE	MCW	UDR	TEAT	CW	REA	MB	BMI	CHB
14.5	-0.6	58	93	1.4	28	5.1	95	1.50	1.40	73	.42	.15	427	119



204 Bar JZ Inspiration 075K

Polled Hereford Cow 3/5/2022 P44359333

Innisfail WHR X651/723 Efbef TFL U208 Tested X651 ET
 4020 ET Innisfail P230 T723
 Bar JZ Brynn 544H Frenzen Bar JZ Bruiser B30
 Bar JZ Topaz 208F

CED	BW	WW	YW	SC	MM	MCE	MCW	UDR	TEAT	CW	REA	MB	BMI	CHB
4.5	2.4	73	103	1.1	26	6.0	94	1.40	1.40	71	.43	.37	455	136

075K. Safe to Bar JZ On Demand on 3/30/2024.



205 Bar JZ Vivian 078K

Polled Hereford Cow 3/5/2022 P44359493

RV Valor 9444G ET JDH Victor 719T 33Z ET
 RV Bobbi 1404
 Bar JZ Carefree 729H Frenzen Freebird F53
 Bar JZ Serendipity 152F

CED	BW	WW	YW	SC	MM	MCE	MCW	UDR	TEAT	CW	REA	MB	BMI	CHB
2.3	4.0	67	108	1.2	26	-0.4	103	1.60	1.60	82	.54	.16	420	138

078K. Safe to NJW 119E 87G Endorsement 216J on 3/30/2024.



206 Bar JZ Vivian 081K

Polled Hereford Cow 3/5/2022 P44359343

RV Valor 9444G ET JDH Victor 719T 33Z ET
 RV Bobbi 1404
 Bar JZ Tequila Rose 563H NJW 33TB 100W Trust 167Y
 Bar JZ Crimson 120F

CED	BW	WW	YW	SC	MM	MCE	MCW	UDR	TEAT	CW	REA	MB	BMI	CHB
4.8	-0.2	55	89	1.1	23	-4.6	89	1.50	1.50	89	.69	.28	425	156

081K. Safe to Bar JZ Broadgauge 184H on 6/4/2024.



POLLED HEREFORD BRED HEIFERS

207 Bar JZ Blessing 085K

Polled Hereford Cow 3/7/2022 P44359468

Bar JZ Buccaneer 210E Frenzen Bar JZ Bruiser B30
Bar JZ Fern 531Y
Bar JZ Dolly 661H Churchill Broadway 858F
Bar JZ Rhapsody 996W

CED	BW	WW	YW	SC	MM	MCE	MCW	UDR	TEAT	CW	REA	MB	BMI	CHB
6.7	2.0	57	91	1.5	29	10.4	78	1.50	1.50	79	.51	.17	445	135

085K. Safe to Bar JZ On Demand on 3/30/2024. White hair on loin.



208 Bar JZ Lexy 088K {DBP}

Polled Hereford Cow 3/8/2022 P44359487

NJW 139C 103C Ridge 254G NJW 73S 38W Ridge 103C ET
NJW 149Z 88X Lexy 139C ET
Bar JZ Blessing 669H Bar JZ Buccaneer 210E
Bar JZ Poppy 061F

CED	BW	WW	YW	SC	MM	MCE	MCW	UDR	TEAT	CW	REA	MB	BMI	CHB
8.2	1.9	63	94	1.3	37	3.8	60	1.50	1.60	71	.45	.06	431	103

088K. Safe to Bar JZ On Demand on 3/30/2024.



209 Bar JZ Vivian 105K

Polled Hereford Cow 3/10/2022 P44359188

RV Valor 9444G ET JDH Victor 719T 33Z ET
RV Bobbi 1404
Bar JZ Poppy 355G Churchill Pilgrim 632D ET
Bar JZ Paisley 159B

CED	BW	WW	YW	SC	MM	MCE	MCW	UDR	TEAT	CW	REA	MB	BMI	CHB
4.7	0.5	63	94	1.4	28	0.6	86	1.60	1.70	92	.69	.19	436	147

105K. Safe to NJW 119E 87G Endorsement 216J on 3/30/2024. Pictured below, Bar JZ Poppy 355G, dam of Lot 209.



210 Bar JZ Frannie 106K

Polled Hereford Cow 3/10/2022 P44355802

TH Frontier 174E TH 403A 475Z Pioneer 358C ET
FTF Trusting Lady 312A
Bar JZ Tequila Rose 126F NJW 33TB 100W Trust 167Y
Bar JZ Rebecca 954W

CED	BW	WW	YW	SC	MM	MCE	MCW	UDR	TEAT	CW	REA	MB	BMI	CHB
8.0	1.2	54	94	1.3	40	1.5	95	1.30	1.20	65	.43	.09	423	120

106K. Safe to Bar JZ On Demand on 3/30/2024.



POLLED HEREFORD BRED HEIFERS

211 Bar JZ Inspiration 108K

Polled Hereford Cow 3/10/2022 P44359366

Innisfail WHR X651/723 4020 ET
 Efbef TFL U208 Tested X651 ET
 Innisfail P230 T723
 Churchill Broadway 858F
 Bar JZ Dolly 606H Bar JZ Wendy 375Y

CED	BW	WW	YW	SC	MM	MCE	MCW	UDR	TEAT	CW	REA	MB	BMI	CHB
7.4	1.6	61	93	0.9	22	6.9	98	1.40	1.30	70	.27	.56	465	160

108K. Safe to Bar JZ Broadgauge 184H on 4/15/2024.



212 Bar JZ Lexy 116K

Polled Hereford Cow 3/11/2022 P44357790

NJW 139C 103C Ridge 254G
 NJW 73S 38W Ridge 103C ET
 NJW 149Z 88X Lexy 139C ET
 Frenzen Bar JZ Bruiser B30
 Bar JZ Brynn 278G Bar JZ Sapphire 806E

CED	BW	WW	YW	SC	MM	MCE	MCW	UDR	TEAT	CW	REA	MB	BMI	CHB
8.1	1.0	63	101	1.0	32	5.2	85	1.40	1.40	71	.38	.19	419	108

116K. Safe to NJW 119E 87G Endorsement 216J on 3/30/2024.



213 Bar JZ Inspiration 121K {DBC}

Polled Hereford Cow 3/10/2022 P44359366

Innisfail WHR X651/723 4020 ET
 Efbef TFL U208 Tested X651 ET
 Innisfail P230 T723
 Bar JZ Kickback 227E ET
 Bar JZ Kindness 767H Bar JZ Red Ruby 373C

CED	BW	WW	YW	SC	MM	MCE	MCW	UDR	TEAT	CW	REA	MB	BMI	CHB
8.4	1.7	67	97	0.9	24	5.6	95	1.40	1.40	66	.35	.38	440	134

121K. Safe to Bar JZ Broadgauge 184H on 5/15/2024.
 DB Carrier.



214 Bar JZ Inspiration 127K

Polled Hereford Cow 3/12/2022 P44359501

Innisfail WHR X651/723 4020 ET
 Efbef TFL U208 Tested X651 ET
 Innisfail P230 T723
 Bar JZ Pilgrim 433F
 Bar JZ Pansy 757H Bar JZ Brynn 994E

CED	BW	WW	YW	SC	MM	MCE	MCW	UDR	TEAT	CW	REA	MB	BMI	CHB
-3.0	1.9	69	100	1.0	25	-2.1	104	1.40	1.40	70	.41	.38	438	136

127K. Safe to Bar JZ On Demand on 3/30/2024.



POLLED HEREFORD BRED HEIFERS

215 Bar JZ Imagination 135K

Polled Hereford Cow 3/14/2022 P44355782

Innisfail WHR X651/723 4013 ET
 Innisfail P230 T723
 Bar JZ Crimson 050F
 Efbef TFL U208 Tested X651 ET
 Innisfail P230 T723
 Churchill Kickstart 501C ET
 Bar JZ Glimmer 384C

CED	BW	WW	YW	SC	MM	MCE	MCW	UDR	TEAT	CW	REA	MB	BMI	CHB
1.8	4.3	72	118	1.3	22	3.0	97	1.30	1.10	72	.36	.30	411	138

135K. Safe to Bar JZ On Demand on 3/30/2024.



216 Bar JZ Vivian 150K

Polled Hereford Cow 3/17/2022 P44355801

RV Valor 9444G ET
 Bar JZ Crimson 120F
 JDH Victor 719T 33Z ET
 RV Bobbi 1404
 Churchill Kickstart 501C ET
 Bar JZ Hannah 158B

CED	BW	WW	YW	SC	MM	MCE	MCW	UDR	TEAT	CW	REA	MB	BMI	CHB
8.3	0.2	55	88	1.1	22	-2.1	100	1.50	1.50	82	.53	.04	407	128

150K. Safe to Bar JZ Broadgauge 184H on 5/5/2024.



217 Bar JZ Frannie 157K

Polled Hereford Cow 3/10/2022 P44355802

TH Frontier 174E
 Bar JZ Wendy 343Y
 TH 403A 475Z Pioneer 358C ET
 FTF Trusting Lady 312A
 Boyd Worldwide 9050 ET
 Bar JZ 346C Lady 701H

CED	BW	WW	YW	SC	MM	MCE	MCW	UDR	TEAT	CW	REA	MB	BMI	CHB
7.7	1.2	65	102	1.2	35	-0.9	74	1.20	1.30	58	.35	-.04	433	91

157K. Safe to Bar JZ Broadgauge 184H on 4/8/2024. Bar JZ Wendy 343Y, dam of Lot 217, is pictured on page 3. She is also the dam of two of our herd sires: Broadgauge 184H and Pilgrim 433F.



218 Bar JZ Mariah 165K

Polled Hereford Cow 3/18/2022 P44359173

Churchill Majestic 903G ET
 Bar JZ Tulip 341G
 Boyd 31Z Blueprint 6153
 H MS 0103 Mariah 4437 ET
 Bar JZ Dutchman 310E
 Bar JZ Wendy 375Y

CED	BW	WW	YW	SC	MM	MCE	MCW	UDR	TEAT	CW	REA	MB	BMI	CHB
1.3	2.8	63	94	0.8	34	0.4	68	1.40	1.50	75	.65	-.01	412	115

165K. Safe to Bar JZ On Demand on 3/30/2024.



POLLED HEREFORD BRED HEIFERS

219

Bar JZ Lexy 178K

Polled Hereford Cow 3/20/2022 P44359294

NJW 139C 103C Ridge 254G NJW 73S 38W Ridge 103C ET
 NJW 149Z 88X Lexy 139C ET
 Bar JZ Statesman 105D
 Bar JZ Stacey 447G Bar JZ Rene 873W

CED	BW	WW	YW	SC	MM	MCE	MCW	UDR	TEAT	CW	REA	MB	BMI	CHB
5.7	1.3	60	81	1.2	40	3.0	74	1.40	1.50	64	.22	.12	462	97

178K. Safe to Bar JZ On Demand on 3/30/2024.



220

Bar JZ Frannie 186K

Polled Hereford Cow 3/20/2022 P44359243

TH Frontier 174E TH 403A 475Z Pioneer 358C ET
 FTF Trusting Lady 312A
 SHF Limelight W18 Y83
 Bar JZ Lottie 379C Bar JZ Julie 074R

CED	BW	WW	YW	SC	MM	MCE	MCW	UDR	TEAT	CW	REA	MB	BMI	CHB
10.9	-0.3	58	90	1.7	40	3.8	89	1.20	1.20	69	.40	.08	411	115

186K. Safe to Bar JZ On Demand on 3/30/2024.



221

Bar JZ Imagination 189K

Polled Hereford Cow 3/21/2022 P44355790

Innisfail WHR X651/723 4013 ET Efb beef TFL U208 Tested X651 ET
 Innisfail P230 T723
 Mohican THM Excede Z426
 Bar JZ Eloquent 063F Bar JZ Emmy Lou 170R

CED	BW	WW	YW	SC	MM	MCE	MCW	UDR	TEAT	CW	REA	MB	BMI	CHB
2.5	2.7	67	103	1.1	25	0.3	79	1.50	1.40	72	.27	.35	433	141

189K. Safe to Bar JZ On Demand on 3/30/2024.



222

Bar JZ Lexy 196K

Polled Hereford Cow 3/22/2022 P44360332

NJW 139C 103C Ridge 254G NJW 73S 38W Ridge 103C ET
 NJW 149Z 88X Lexy 139C ET
 Bar JZ Trust Fund 245A Et
 Bar JZ Topaz 983E Bar JZ Ruthie 331Y

CED	BW	WW	YW	SC	MM	MCE	MCW	UDR	TEAT	CW	REA	MB	BMI	CHB
2.3	3.5	59	92	1.0	29	-0.7	76	1.40	1.40	66	.33	.03	405	97

196K. Safe to Bar JZ On Demand on 3/30/2024.



POLLED HEREFORD BRED HEIFERS

223

Bar JZ Lexy 202K

Polled Hereford Cow 3/22/2022 P44359367

NJW 139C 103C Ridge 254G NJW 73S 38W Ridge 103C ET
 NJW 149Z 88X Lexy 139C ET
 Bar JZ Rose Red 607H ILR Red Power 456B
 Bar JZ Rebecca 954W

CED	BW	WW	YW	SC	MM	MCE	MCW	UDR	TEAT	CW	REA	MB	BMI	CHB
1.1	1.2	55	82	1.4	36	-5.0	58	1.40	1.40	61	.31	.06	466	92

202K. Safe to Bar JZ On Demand on 3/30/2024.



224

Bar JZ Vivian 205K

Polled Hereford Cow 3/22/2022 P44360295

RV Valor 9444G ET JDH Victor 719T 33Z ET
 RV Bobbi 1404
 Bar JZ Hope 833A ET NJW 73S M326 Trust 100W ET
 Bar JZ 346C Lady 701H

CED	BW	WW	YW	SC	MM	MCE	MCW	UDR	TEAT	CW	REA	MB	BMI	CHB
14.3	-2.4	53	78	0.9	23	5.6	89	1.40	1.50	79	.63	.26	442	140

205K. Safe to NJW 119E 87G Endorsement 216J on 3/30/2024.



225

Bar JZ Vivian 208K

Polled Hereford Cow 3/23/2022 P44360320

RV Valor 9444G ET JDH Victor 719T 33Z ET
 RV Bobbi 1404
 Bar JZ Heartstrings 901E Bar JZ Heartstone 426B ET
 Bar JZ Danielle 148X

CED	BW	WW	YW	SC	MM	MCE	MCW	UDR	TEAT	CW	REA	MB	BMI	CHB
7.4	0.4	60	91	1.1	25	0.3	101	1.40	1.50	83	.55	.09	387	128

208K. Safe to NJW 119E 87G Endorsement 216J on 3/30/2024.



226

Bar JZ Lexy 210K

Polled Hereford Cow 3/23/2022 P44359145

NJW 139C 103C Ridge 254G NJW 73S 38W Ridge 103C ET
 NJW 149Z 88X Lexy 139C ET
 Bar JZ Shyanna 297G TH 49U 719T Sheyenne 3X
 Bar JZ Corabelle 014E

CED	BW	WW	YW	SC	MM	MCE	MCW	UDR	TEAT	CW	REA	MB	BMI	CHB
6.4	1.7	67	98	1.2	36	1.5	76	1.30	1.40	69	.29	.07	408	

210K. Safe to Bar JZ On Demand on 3/30/2024.



POLLED HEREFORD BRED HEIFERS

227 Bar JZ Frannie 213K

Polled Hereford Cow 3/23/2022 P44359301

TH Frontier 174E

TH 403A 475Z Pioneer 358C ET

FTF Trusting Lady 312A

Bar JZ Kickback 227E ET

Bar JZ Kindness 466G

Bar JZ Jaycee 567T

CED	BW	WW	YW	SC	MM	MCE	MCW	UDR	TEAT	CW	REA	MB	BMI	CHB
12.3	-1.0	55	90	0.8	38	2.8	93	1.20	1.10	62	.42	-.01	403	102

213K. Safe to Bar JZ On Demand on 3/30/2024.



Lot 227

228 Bar JZ Frannie 215K

Polled Hereford Cow 3/23/2022 P44359301

TH Frontier 174E

TH 403A 475Z Pioneer 358C ET

FTF Trusting Lady 312A

Churchill Kickstart 501C ET

Bar JZ Crimson 776E ET

Bar JZ Rene 873W

CED	BW	WW	YW	SC	MM	MCE	MCW	UDR	TEAT	CW	REA	MB	BMI	CHB
14.6	-2.1	56	83	1.5	38	5.0	84	1.30	1.40	63	.40	-.05	438	98

215K. Safe to Bar JZ On Demand on 3/30/2024.



Lot 228

229 Bar JZ Inspiration 216K

Polled Hereford Cow 3/23/2022 P44355765

Innisfail WHR X651/723
4020 ET

Efbeef TFL U208 Tested X651 ET

Innisfail P230 T723

Bar JZ Trust Fund 245A ET

Bar JZ Topaz 007E

Bar JZ Kylie Jo 843U

CED	BW	WW	YW	SC	MM	MCE	MCW	UDR	TEAT	CW	REA	MB	BMI	CHB
0.5	5.3	78	119	1.2	26	2.4	110	1.30	1.10	75	.50	.26	419	132

216K. Safe to Bar JZ On Demand on 3/30/2024.



Lot 229

230 Bar JZ Vivian 220K

Polled Hereford Cow 3/24/2022 P44359275

RV Valor 9444G ET

JDH Victor 719T 33Z ET

RV Bobbi 1404

Frenzen Bar JZ Bruiser B30

Bar JZ Brynn 435G

Bar JZ Hannah 087B

CED	BW	WW	YW	SC	MM	MCE	MCW	UDR	TEAT	CW	REA	MB	BMI	CHB
3.3	1.5	67	101	1.3	34	2.2	110	1.50	1.50	92	.65	.13	449	143

220K. Safe to NJW 119E 87G Endorsement 216J on 3/30/2024.



Zilverberg

Lot 230

POLLED HEREFORD BRED HEIFERS

231 Bar JZ Imagination 231K

Polled Hereford Cow 3/25/2022 P44357741

Innisfail WHR X651/723 4013 ET
 Innisfail P230 T723
 Bar JZ Crimson 192F
 Churchill Kickstart 501C
 Bar JZ Hope 243B

CED	BW	WW	YW	SC	MM	MCE	MCW	UDR	TEAT	CW	REA	MB	BMI	CHB
9.3	1.7	74	119	1.5	24	5.3	111	1.20	1.10	79	.49	.29	409	140

231K. Safe to Bar JZ On Demand on 3/30/2024.



232 Bar JZ Lexy 232K

Polled Hereford Cow 3/25/2022 P44359290

NJW 139C 103C Ridge 254G
 NJW 73S 38W Ridge 103C ET
 NJW 149Z 88X Lexy 139C ET
 Bar JZ Lottie 439C
 SHF Limelight W18 Y83
 Bar JZ Kylie Jo 812U

CED	BW	WW	YW	SC	MM	MCE	MCW	UDR	TEAT	CW	REA	MB	BMI	CHB
6.0	1.5	60	96	1.2	34	3.2	77	1.20	1.30	72	.34	.12	370	111

232K. Safe to Bar JZ On Demand on 3/30/2024.



233 Bar JZ Frannie 233K

Polled Hereford Cow 3/25/2022 P44359244

TH Frontier 174E
 TH 403A 475Z Pioneer 358C ET
 FTF Trusting Lady 312A
 Bar JZ Zoey 380C
 MSU Xerox 20X
 Bar JZ Scarlet 740U

CED	BW	WW	YW	SC	MM	MCE	MCW	UDR	TEAT	CW	REA	MB	BMI	CHB
8.4	0.0	57	94	1.1	34	2.4	96	1.30	1.30	63	.33	.07	362	114

233K. Safe to Bar JZ Broadgauge 184H on 4/25/2024.



234 Bar JZ Lexy 243K {DBP}

Polled Hereford Cow 3/26/2022 P44355788

NJW 139C 103C Ridge 254G
 NJW 73S 38W Ridge 103C ET
 NJW 149Z 88X Lexy 139C ET
 Bar JZ Poppy 061F
 Churchill Pilgrim 632D ET
 Bar JZ Hope 026A

CED	BW	WW	YW	SC	MM	MCE	MCW	UDR	TEAT	CW	REA	MB	BMI	CHB
5.0	2.2	61	92	1.1	36	-0.2	78	1.40	1.50	70	.38	.07	397	102

243K. Safe to Bar JZ Broadgauge 184H on 5/15/2024.



POLLED HEREFORD BRED HEIFERS

235 Bar JZ Mariah 253K

Polled Hereford Cow 3/26/2022 P44357774

Churchill Majestic 903G ET Boyd 31Z Blueprint 6153
H MS 0103 Mariah 4437 ET
Bar JZ Dutchman 310E
Bar JZ Tulip 251G Bar JZ Topaz 021E

CED	BW	WW	YW	SC	MM	MCE	MCW	UDR	TEAT	CW	REA	MB	BMI	CHB
4.8	2.0	65	91	1.3	32	1.9	88	1.50	1.60	79	.67	.00	448	117

253K. Safe to Bar JZ On Demand on 3/30/2024.



Lot 235

236 Bar JZ Imagination 262K

Polled Hereford Cow 3/25/2022 P44357741

Innisfail WHR X651/723 4013 ET Efbeef TFL U208 Tested X651 ET
Innisfail P230 T723
Bar JZ Heartstone 426B ET
Bar JZ Heartstrings 925E Bar JZ Isabella 272X

CED	BW	WW	YW	SC	MM	MCE	MCW	UDR	TEAT	CW	REA	MB	BMI	CHB
-2.2	5.3	81	131	1.3	24	-0.9	121	1.30	1.30	81	.53	.30	377	145

262K. Safe to Bar JZ On Demand on 3/30/2024.



Lot 236

237 Bar JZ Lexy 264K

Polled Hereford Cow 3/30/2022 P44359477

NJW 139C 103C Ridge 254G NJW 73S 38W Ridge 103C ET
NJW 149Z 88X Lexy 139C ET
ILR Red Power 456B
Bar JZ Rose Red 676H Bar JZ Hope 243B

CED	BW	WW	YW	SC	MM	MCE	MCW	UDR	TEAT	CW	REA	MB	BMI	CHB
3.3	3.8	65	99	1.5	35	1.4	74	1.40	1.50	67	.48	.01	451	98

264K. Safe to Bar JZ On Demand on 3/30/2024.



Lot 237

Zilverberg

238 Bar JZ Imagination 277K

Polled Hereford Cow 4/1/2022 P44359298

Innisfail WHR X651/723 4013 ET Efbeef TFL U208 Tested X651 ET
Innisfail P230 T723
Bar JZ Kickback 227E
Bar JZ Kindness 451G Bar JZ Fern 489Y

CED	BW	WW	YW	SC	MM	MCE	MCW	UDR	TEAT	CW	REA	MB	BMI	CHB
7.0	1.7	61	88	1.2	24	4.3	60	1.50	1.50	68	.34	.34	490	135

277K. Safe to Bar JZ On Demand on 3/30/2024.



Lot 238

POLLED HEREFORD BRED HEIFERS

239 Bar JZ Blessing 282K

Polled Hereford Cow 4/2/2022 P44359479

Bar JZ Buccaneer 210E Frenzen Bar JZ Bruiser B30
Bar JZ Fern 531Y
Bar JZ Tequila Rose 684H NJW 33TB 100W Trust 167Y
Bar JZ Scarlet 740U

CED	BW	WW	YW	SC	MM	MCE	MCW	UDR	TEAT	CW	REA	MB	BMI	CHB
11.4	0.9	50	75	1.1	31	8.2	46	1.50	1.50	69	.56	.25	407	133

282K. Safe to Bar JZ Broadgauge 184H on 5/5/2024.



Lot 239

240 Bar JZ Frannie 284K{DBP}

Polled Hereford Cow 4/5/2022 P44359183

TH Frontier 174E TH 403A 475Z Pioneer 358C ET
FTF Trusting Lady 312A
Bar JZ Poppy 348G Churchill Pilgrim 632D ET
Bar JZ Zoey 380C

CED	BW	WW	YW	SC	MM	MCE	MCW	UDR	TEAT	CW	REA	MB	BMI	CHB
10.9	0.5	65	106	1.4	39	5.0	90	1.30	1.30	74	.49	.03	421	117

284K. Safe to Bar JZ On Demand on 3/30/2024.



Lot 240

Zilverberg

241 Bar JZ Brianna 288K

Polled Hereford Cow 4/7/2022 P44359157

Bar JZ Bridger 622G Frenzen Bar JZ Bruiser B30
Bar JZ Hope 881A ET
Bar JZ Heartstrings 325G Bar JZ Hearthstone 426B
Bar JZ Danielle 148X

CED	BW	WW	YW	SC	MM	MCE	MCW	UDR	TEAT	CW	REA	MB	BMI	CHB
7.6	0.2	55	79	0.6	25	3.6	89	1.40	1.40	65	.34	.01	426	93

288K. Safe to Bar JZ On Demand on 3/30/2024. Pictured below Bar JZ Heartstrings 325G, dam of Lot 241 and our herd sire Vanquish 329J.



Lot 241

242 Bar JZ Gabby 295K

Polled Hereford Cow 4/11/2022 P44359478

Bar JZ Broadgauge 184H Churchill Broadway 858F
Bar JZ Wendy 343Y
Bar JZ Blessing 681H Bar JZ Buccaneer 210E
Bar JZ Serendipity 147F

CED	BW	WW	YW	SC	MM	MCE	MCW	UDR	TEAT	CW	REA	MB	BMI	CHB
16.2	-2.7	47	70	1.4	29	11.1	69	1.40	1.40	66	.25	.31	463	133

295K. Safe to Bar JZ Broadgauge 184H on 5/25/2024.



Lot 242

POLLED HEREFORD BRED HEIFERS

243

Bar JZ Pansy 304K{DBP}

Polled Hereford Cow 4/15/2022 P44360264

Bar JZ Pilgrim 433F Churchill Pilgrim 632D ET
Bar JZ Wendy 343Y
Bar JZ Brynn 795E Frenzen Bar JZ Bruiser B30
Bar JZ Paisley 159B

CED	BW	WW	YW	SC	MM	MCE	MCW	UDR	TEAT	CW	REA	MB	BMI	CHB
-1.3	1.1	56	83	0.9	25	2.0	81	1.50	1.70	61	.40	.05	388	94

304K. Safe to Bar JZ On Demand on 3/30/2024. Pictured below Bar JZ Brynn 795E, dam of Lot 243.



Lot 244 out of sale.

245

Bar JZ Brianna 316K

Polled Hereford Cow 4/22/2022 P44359235

Bar JZ Bridger 622G Frenzen Bar JZ Bruiser B30
Bar JZ Hope 881A ET
Bar JZ Tulip 377G Bar JZ Dutchman 310E
Bar JZ Rebecca 974W

CED	BW	WW	YW	SC	MM	MCE	MCW	UDR	TEAT	CW	REA	MB	BMI	CHB
6.8	-1.5	55	75	0.6	33	4.3	87	1.40	1.50	68	.44	.09	414	107

316K. Safe to Bar JZ On Demand on 3/30/2024.



246

Bar JZ Brianna 332K

Polled Hereford Cow 5/11/2022 P44357729

Bar JZ Bridger 622G Frenzen Bar JZ Bruiser B30
Bar JZ Hope 881A ET
Bar JZ Paisley 159B GV CMR 351 Proof Y459 ET
Bar JZ Virginia 473Y

CED	BW	WW	YW	SC	MM	MCE	MCW	UDR	TEAT	CW	REA	MB	BMI	CHB
5.2	0.8	57	73	1.1	28	6.9	77	1.50	1.70	70	.46	.12	461	110

332K. Safe to Bar JZ On Demand on 3/30/2024.



247

Bar JZ Frannie 229K{DBP}

Polled Hereford Cow 3/25/2022 P44359163

TH Frontier 174E TH 403A 475Z Pioneer 358C ET
Bar JZ Serendipity 331G FTF Trusting Lady 312A
Bar JZ Glory 756D Bar JZ Surgical Strike 014D ET

CED	BW	WW	YW	SC	MM	MCE	MCW	UDR	TEAT	CW	REA	MB	BMI	CHB
2.8	3.2	69	107	1.1	39	2.8	82	1.30	1.30	67	.53	-.03	420	104

229K. Safe to Bar JZ On Demand on 3/30/2024.

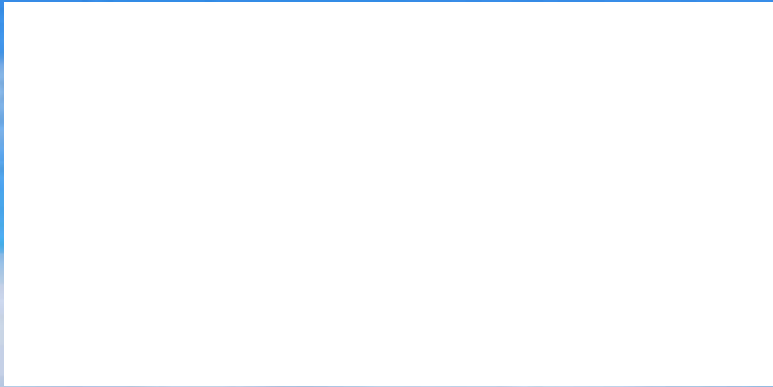




Bar JZ Ranches
Excellence in Polled Genetics
 Don/Peg Silverberg
 Seth/Bridget Silverberg
 18542 326 Ave.
 Holabird, SD 57540
 605/852-2966

Presorted
 First Class Mail
 US Postage
 PAID
 Aberdeen SD
 Permit No 200

Location
Bar JZ South Ranch Sale Barn



www.barjz.com



1. Bar JZ Griffin 750L
 by Bar JZ Broadgauge



7. Bar JZ Griffin 779L
 by Bar JZ Broadgauge



50. Bar JZ Valiant 710K
 by RV Valor



71. Bar JZ Rimrider 526K
 by NJW Ridge 254G



205. Bar JZ Vivian 078K by Valor
 Safe to NJW Endorsement on 3/30



212. Bar JZ Lexy116K by Ridge
 Safe to NJW Endorsement on 3/30



116. Bar JZ Easy Rider 807L
 by AHCC Easy Rider



128. Bar JZ Checkbook Too 828L
 by Bar JZ Checkbook



129. Bar JZ Checkbook Too 833L
 by Bar JZ Checkbook